

MAGic[®]

Screen Magnification Software with Speech

User's Guide

Freedom Scientific BLV Group, LLC
July 2005

MAGic® User's Guide

PUBLISHED BY

Freedom Scientific BLV Group, LLC
11800 31st Court North
St. Petersburg, Florida 33716-1805
USA
<http://www.FreedomScientific.com>

Information in this document is subject to change without notice. No part of this publication may be reproduced or transmitted in any form or any means, electronic or mechanical, for any purpose, without the express written permission of Freedom Scientific.

Copyright © 2001 Freedom Scientific BLV Group, LLC, All Rights Reserved.
Copyright © 1998 Henter-Joyce, Inc., All Rights Reserved.

MAGic and JAWS are registered trademarks of Freedom Scientific BLV Group, LLC in the United States and other countries. OpenBook, WYNN, and Connect Outloud are trademarks of Freedom Scientific BLV Group, LLC in the United States. Microsoft, Windows NT, Windows 2000 Professional, Windows 95, Windows 98, Windows Me, and Windows XP Home/Pro, Word, Excel, and Internet Explorer are registered trademarks of Microsoft Corporation in the U.S. and/or other countries. Other product and company names mentioned herein may be the trademark of their respective owners.

Table of Contents

Introduction MAGic User's Guide	1
About This Book	1
Items Checklist	1
Chapter 1 Quick Start Guide.....	2
Welcome to MAGic	2
System Requirements	3
Installing MAGic.....	3
Product Activation	4
Activating with Internet License Manager.....	5
Activating by Telephone	7
Activating by Fax	8
Activating through a Trusted Third Party	10
Dongle Authorization	12
3.5-inch Disk (Quella) Authorization	13
Uninstalling MAGic.....	13
MAGic Program Group	13
Tools Folder	14
Explore MAGic.....	15
Starting MAGic	15
Quitting MAGic.....	15
Overview of MAGic for New Users.....	16
Magnification and Speech Buttons	17
MAGic Menus	19
The MAGic Key	20
Hot Keys.....	20
Reading Text with MAGic	20
Using the Mouse to Read Text.....	21
Using the Keyboard to Read Text	21
Typing Echo.....	22
Changing your Preferences	22
Minimize on Startup	23

Run MAGic at Startup	23
Prompt to Save Settings on Exit.....	23
Disable Screen Saver	23
Enable Bilingual User Interface.....	24
Prompt to Overwrite Schemes.....	24
Run MAGic from System Tray	24
Enforced Write Protect.....	25
Getting Help	25
Online Help System	25
What's This? Help	25
MAGic User's Guide	26
MAGic Basic Training	26
Technical Support	26
About MAGic	26
Basic Training.....	26
Chapter 2 Navigating MAGic	28
Use Your Mouse and Your Keyboard	28
Using the Keyboard with MAGic	28
The MAGic Key	28
Customizing the Keyboard	29
Using the Mouse with MAGic	30
Point and Click.....	30
Left Click vs. Right Click.....	30
Chapter 3 User Interface.....	31
Title Bar.....	31
Menu Bar.....	32
Quick Access Window.....	33
The Magnification Buttons.....	33
The Speech Buttons.....	39
Chapter 4 Magnification.....	41
Magnification Features	41
The Magnification Menu.....	42
Display.....	42
Mouse Enhancements.....	44

Cursor Enhancements	49
Color Enhancements	53
View Properties.....	57
Quick View Frame	61
Locator.....	64
Panning.....	65
Tracking	68
Chapter 5 Speech	71
MAGic Speaks.....	71
The Speech Menu.....	71
Voices	71
Mouse Echo.....	76
Typing Echo.....	77
Verbosity.....	78
Synchronization	81
Document and Text Reading.....	83
Chapter 6 Keyboard.....	86
MAGic Key	86
Keyboard Assignments.....	87
Customizing Hot Keys	88
Chapter 7 Application Specific Functions	89
MAGic and Microsoft Word	89
MAGic and Microsoft Excel.....	92
MAGic and Microsoft Internet Explorer.....	96
Chapter 8 Contacting Freedom Scientific	97
Freedom Scientific Web Site	97
Documentation Feedback.....	98
Sales.....	98
Technical Support.....	98
Appendix A SAPI Synthesizers on a Network.....	100

Appendix B Hot Keys	101
General.....	101
Magnification, Views, & Enhancements	101
Panning and Screen Movement	101
Tracking.....	102
Locator Mode.....	102
Quick View Frame.....	103
Speech.....	103
Document Reading	104
Text Reading	104
Typing Echo	105
Mouse Echo	105
Appendix C Windows Shortcut Keys	106
General.....	106
For Windows and Menus	106
For Dialog Boxes	107
For Reading Text	107
For Editing Text.....	108
For Windows Explorer.....	108
Index	109

About This Book

The *MAGic User's Guide* teaches you to use and customize MAGic's magnification and speech capabilities to fit your personal needs. In the front of the book, you can find perforated keystroke reference cards that contain a list of important MAGic commands. *Chapter 1 Quick Start Guide* gives you the basics to get up and running with MAGic. *Chapter 2 Navigating MAGic* explains how to use your keyboard and mouse with MAGic. *Chapter 3 User Interface* provides details on the buttons and other options available on the MAGic user interface. *Chapter 4 Magnification* describes how to customize MAGic's magnification features, including mouse, cursor, and color enhancements. *Chapter 5 Speech* explains how you can customize how MAGic uses synthesized speech to read text on your screen. *Chapter 6 Keyboard* provides information on customizing MAGic's keystrokes. *Chapter 7 Application Specific Functions* describes MAGic commands you can use in Microsoft Word, Excel, and Internet Explorer. *Chapter 8 Contacting Freedom Scientific* tells you how to find our Web site and contact technical support.

Items Checklist

In your MAGic package, you should find the following items. If you discover damaged or missing items, please contact your retailer.

- CD wallet containing one program CD-ROM and either an authorization or update disk
- Registration disk and return mail envelope
- *MAGic User's Guide*

Chapter 1

Quick Start Guide

Welcome to MAGic

MAGic is a software solution ideally suited for computer users with low vision, or anyone who spends extended periods of time in front of a computer screen.

MAGic lets you magnify your computer screen from 1 to 16 times its usual size. You can choose from a number of different adjustable views that let you see both a magnified and unmagnified portion of the screen at the same time.

Speech features assist you in processing the information on your screen. MAGic can read text that you type or point at with the mouse. MAGic moves the magnified area of the screen so you always see the text being read and highlights words as they are spoken.

Mouse and cursor enhancements help you track the location of the mouse pointer and cursor on the screen. You can choose from a wide variety of enhancement styles. MAGic lets you change the color of these enhancements, apply transparency effects, adjust their size, and more.

Color enhancements let you change how colors display on your screen. You can create rules that replace one color with another or switch two colors. You can also apply color tinting, make your screen black-and-white (monochrome), and invert the brightness and colors of your display.

Other MAGic features track elements of your screen, such as the mouse pointer, dialog boxes, and so on. The Locator feature provides you with a way to quickly find and move to different areas of the screen. The MAGic multi-directional panning system gives you complete control with adjustable speed, direction, stop and start, and screen navigation controls.

System Requirements

The recommended system requirements for MAGic are listed below.

Specification	Minimum Requirement
MAGic Standard	Windows 95/98/ME/2000/XP Home*
MAGic Professional	Windows 95/98/ME/NT/2000/XP Home and Pro*
Processor speed	166 MHz
RAM	64 MB
Available hard disk space for installation	75 MB
Available hard disk space after installation	45 MB
Video	256 color graphics**
Sound	Windows compatible sound card (for speech option)

* Some MAGic features are not available for Windows 95/98/ME users.

** While MAGic will work with 256 colors, it is recommended that you use high or true color depth (16-bit color or higher).

Installing MAGic

1. Insert the MAGic CD into your CD-ROM drive.
2. The MAGic Setup program starts. You will hear the installation speak the instructions as they appear on your screen. Follow these instructions to complete the MAGic installation.

If your MAGic installation CD does not start automatically, click the **Start** button, select **Run**, and type `D:\setup`. If your CD-ROM is not D, substitute the correct drive letter.

The MAGic setup program will then begin.

Choose to run the automatic or guided installation of MAGic. The automatic installation assumes that you want to install all languages and you approve of the default location where MAGic is stored on your hard disk. Use the guided installation if you want to specify which languages to install, where MAGic is stored on your computer, or whether MAGic should start automatically when you start Windows.

Instructions for installing MAGic on a network can be found in the online help system.

Product Activation

After you install MAGic, you must activate your software. MAGic runs in 40 minute mode until it is activated on your computer. Internet License Manager (ILM) allows you to quickly activate MAGic using the Internet. If you do not have an Internet connection, you can activate MAGic by telephone or fax. Alternatively, you can activate MAGic with the assistance of a trusted friend, relative, or organization that has access to the Internet.

Tip: For information on activating a multi-user network license of MAGic, refer to the *Network MAGic* book in the MAGic online help.

If you purchased a single-user license of MAGic, you are asked to activate when you first start the program. You can activate MAGic at a later time by opening the **Help** menu and choosing **Update Authorization**. Choose one of the following activation methods and refer to the listed page for detailed instructions:

- Activate using the Internet (page 5)
- Activate by Telephone (page 7)
- Activate by Fax (page 8)
- Activate with the Help of a Trusted Third Party (page 10)

Note: If you are using Windows 2000, XP, or NT, your user account must have power user or administrator privileges to activate MAGic. Contact your network administrator if your account does not have the required level of access.

You can also use a dongle (a hardware device that connects to your computer's USB or parallel port) to make your MAGic license more portable. A dongle allows you to use an authorized version of MAGic on any computer as long as the dongle remains connected. For more information, see *Dongle Authorization* on page 12.

If your version of MAGic does not use Internet License Manager authorization, refer to page 13 for information on 3.5-inch Disk (Quella) Authorization.

Activating with Internet License Manager

You can use Internet License Manager (ILM) to activate MAGic using an Internet connection. This is the easiest and quickest way to activate your product.

When you first start MAGic, you are asked to activate the program. You can also begin the activation process by opening the **Help** menu and choosing **Update Authorization**. To activate MAGic using the Internet, do the following:

1. In the **Activation** dialog box, choose **Start Activation**.
2. Read the message that displays and then choose **Continue**. Insert the Authorization CD into your CD-ROM drive and choose **Activate Using Authorization CD**. You can find your Authorization CD in the same sleeve as your MAGic program CD. If you do not have your Authorization CD, choose **Enter Your Authorization Number Manually**.

Note: If you have previously inserted your Authorization CD, you will not be asked to insert it again. Continue to step 3 of the activation.

3. Choose **Activate**.

4. Use the arrow keys to select **Now, Using the Internet (RECOMMENDED)**, and then press **ENTER**.
5. If you used your Authorization CD, your 20-digit Authorization number is automatically inserted into the **Authorization Number** edit box. If your Authorization number is not shown, type it into the edit box. You can find your Authorization number in print and Braille on your MAGic CD sleeve.
6. Press **ENTER** to continue. You will be asked to connect to the Internet if you have not already done so. You must establish an Internet connection before continuing with the activation.
7. If you have not registered MAGic, you are asked to do so now. Registering MAGic lets you receive technical support. Choose **Register Now** and complete the online registration form by following the instructions provided. You can choose to register later, but you must register the next time you activate MAGic.
8. After you submit your registration, Internet License Manager attempts to activate MAGic. This process may take several minutes. When the activation is successful, choose **Finish**.

Note: If Internet License Manager cannot activate MAGic because of your firewall software, see *Troubleshooting Firewall Software* on page 6.

Troubleshooting Firewall Software

Firewalls protect computer systems from being accessed by unauthorized users. Some network or personal firewall software may interfere with the installation, activation, or usage of MAGic. The following information will help you reconfigure your firewall to work with MAGic. Refer to your firewall software documentation for more information on allowing access for programs and files.

Note: Hardware firewalls do not interfere with installing, activating, or running MAGic.

Firewall Interferes with Installation

If your firewall software is preventing you from installing MAGic on your computer, reconfigure the firewall to allow the file Setup.exe to run. Then retry the installation procedure.

Firewall Interferes with Activation

If your firewall software prevents you from activating MAGic using the Internet, reconfigure the firewall to allow the following files to run: FSActivate.exe, CAUtil.exe, and CAUtil.enu. Once you have reconfigured your firewall, retry the activation process. If you cannot reconfigure the firewall, or if you still cannot activate MAGic, go to www.FSActivate.com. Follow the instructions on the Web page to retrieve an Activation License code and activate your software. For more information on using www.FSActivate.com, see *Activating through a Trusted Third Party* on page 10.

Firewall Interferes with Using MAGic

If the firewall software prevents MAGic from running or starting, or displays a warning message, reconfigure the firewall to allow the file JFW.exe to run.

Advanced Troubleshooting Information

For a complete list of all files that need to be allowed by your firewall software, including the connection type, incoming port, and outgoing port, refer to *Advanced Troubleshooting* in the MAGic Online Help.

Activating by Telephone

If you do not have an Internet connection, you can call Freedom Scientific Customer Service. Customer Service will send you a CD in the mail that will automatically activate MAGic.

When you first start MAGic, you are asked to activate the program. You can also begin the activation process by opening the **Help** menu and choosing **Update Authorization**. To activate MAGic by telephone, do the following:

1. In the **Activation** dialog box, choose **Start Activation**.

2. Read the message that displays and then choose **Continue**. Insert the Authorization CD into your CD-ROM drive and choose **Activate Using Authorization CD**. You can find your Authorization CD in the same sleeve as your MAGic program CD. If you do not have your Authorization CD, choose **Enter Your Authorization Number Manually**.

Note: If you have previously inserted your Authorization CD, you will not be asked to insert it again. Continue to step 3 of the activation.

3. Choose **Activate**.
4. Use the arrow keys to select **Telephone to Receive Activation by Mail**, and then press **ENTER**.
5. Call (727) 803-8015. Provide the customer service representative with the Authorization number and Locking code shown in this dialog box. If your Authorization number is not shown, you can find it in print and Braille on your MAGic CD sleeve.
6. Choose **Quit**. You can continue using MAGic in 40 minute mode until you receive your CD.

When you receive the CD with your Activation License code from Freedom Scientific, insert it into your CD-ROM drive to automatically activate MAGic.

Note: If the CD does not automatically activate your software, press **WINDOWS Key+R**, type "D:\ActivationCode.exe" and press **ENTER**. If your CD-ROM drive is not D:, then substitute the correct letter.

Activating by Fax

If you do not have an Internet connection, you can send a fax to Freedom Scientific with your Authorization number and Locking code. You will then receive an Activation License code either in an e-mail message or on a CD.

When you first start JAWS, you are asked to activate the program. You can also begin the activation process by opening the **Help** menu and choosing **Update Authorization**. To activate JAWS by fax, do the following:

1. In the **Activation** dialog box, choose **Start Activation**.
2. Read the message that displays and then choose **Continue**. Insert the Authorization CD into your CD-ROM drive and choose **Activate Using Authorization CD**. You can find your Authorization CD in the same sleeve as your JAWS program CD. If you do not have your Authorization CD, choose **Enter Your Authorization Number Manually**.

Note: If you have previously inserted your Authorization CD, you will not be asked to insert it again. Continue to step 3 of the activation.

3. Choose **Activate**.
4. Use the arrow keys to select **Fax**, and then press **ENTER**.
5. Complete the form by typing the required information into the edit boxes. If you want to receive your Activation License code in an e-mail message, enter your e-mail address. If you do not enter an e-mail address, Freedom Scientific will send you a CD in the mail that will automatically activate JAWS.
6. If you used your Authorization CD, your 20-digit Authorization number is automatically inserted into the **Authorization Number** edit box. If your Authorization number is not shown, type it into the edit box. You can find your Authorization number in print and Braille on your JAWS CD sleeve.
7. Choose **Print** to send the form to your printer. After you have printed the form, choose **Quit**.
8. Fax the printed form to (727) 803-8001.

If you entered your e-mail address, you should receive an e-mail message from Freedom Scientific within one or two business days. Follow the instructions provided in the message to activate JAWS. If you do not enter an e-mail address, you will receive a CD from Freedom Scientific in the mail. Insert the CD into your CD-ROM drive to automatically activate JAWS.

Note: If the CD does not automatically activate your software, press **WINDOWS Key+R**, type "D:\ActivationCode.exe" and press **ENTER**. If your CD-ROM drive is not D:, then substitute the correct letter.

Activating through a Trusted Third Party

If you know a friend, relative, or other trusted person with an Internet connection, they can help you activate MAGic. Alternatively, you can use an Internet connection in a library, at work, or anywhere else. You or a trusted third party can visit www.FSActivate.com to obtain your Activation License code.

Tip: A free program from Freedom Scientific called Activation Media Image Creator lets you create a CD, 3.5-inch disk, or e-mail attachment containing MAGic license information.

To obtain an Activation License code from [FSActivate.com](http://www.FSActivate.com), do the following:

1. Point your Web browser to <http://www.FSActivate.com>.
2. Enter your 20-digit Authorization number and Locking code. Your Authorization number appears on your MAGic CD sleeve in both print and Braille. To find your computer's Locking code, open the **MAGic Help** menu and choose **About**.

Note: The Locking code is unique for each individual computer. Be sure you enter the Locking code of the computer you intend to use with MAGic when it is activated.

3. Choose **Submit License Request** to receive an Activation License code.

4. The remaining steps must be completed on the computer where the copy of **MAGic** you want to activate is installed. Begin by starting **MAGic** on this computer. From the **MAGic Help** menu, choose **Update Authorization**.
5. In the **Activation** dialog box, choose **Start Activation**.
6. Read the message that displays and then choose **Continue**. Insert the Authorization CD into your CD-ROM drive and choose **Activate Using Authorization CD**. You can find your Authorization CD in the same sleeve as your **MAGic** program CD. If you do not have your Authorization CD, choose **Enter Your Authorization Number Manually**.

Note: If you have previously inserted your Authorization CD, you will not be asked to insert it again. Continue to step 7 of the activation.

7. Choose **Activate**.
8. Use the arrow keys to select the **Activation Generated from www.FSActivate.com** radio button and press **ENTER**.
9. Type the Activation License code you received from www.FSActivate.com into the edit box and then press **ENTER**.
10. After you have successfully activated **MAGic**, choose **Finish** to complete the process.

Using Activation Media Image Creator

Activation Media Image Creator is a free program from Freedom Scientific that allows a user with an Internet connection to retrieve Activation License codes from Internet License Manager. The user can then distribute these Activation License codes on CD, 3.5-inch disk, or e-mail. Users without Internet connections can use the files created by this program to activate **MAGic** without having to type the lengthy Activation License code.

To download the installation package for Activation Media Image Creator, visit www.FSActivate.com. After you install the program, follow the instructions in the Activation Media Image Creator online Help to retrieve and distribute Activation License codes from Internet License Manager.

Dongle Authorization

A dongle is a hardware device that you can connect to a computer's parallel or USB port (depending on the type of dongle). MAGic is authorized to run on that computer as long as the dongle remains connected. This is useful if you frequently need to use MAGic on many different computers and do not want to activate the program on each of them.

When MAGic starts, it first determines whether a dongle is connected to the computer. If one is connected, MAGic uses the features and information for the license associated with the dongle to authorize MAGic. If no dongle is connected, MAGic searches for the license information stored on the computer. You can use the Dongle Viewer utility to view information on the license associated with the dongle currently connected to your computer. To start this utility, go to the MAGic program group, open the Tools submenu, and choose Dongle Viewer.

Note: It is recommended that you do not connect the dongle to your computer until after you install MAGic. If the dongle was connected before or during installation, you must restart your computer to receive proper authorization.

Dongles are sold separately or as an additional MAGic feature. Contact Freedom Scientific Sales if you want to purchase one.

Note: Certain international versions of MAGic require a dongle for authorization. Using one of these versions without a dongle displays an error message.

3.5-inch Disk (Quella) Authorization

If your version of MAGic uses a 3.5-inch disk for authorization instead of Internet License Manager, this section will help you authorize your software.

The authorization key contains the information your computer needs to run MAGic. MAGic prompts you for either an authorization disk or an update disk, if you received one. Follow the instructions that appear on the screen to complete your authorization of MAGic. The first time you start MAGic, you are asked to register your software.

Uninstalling MAGic

To uninstall MAGic go to the **Program** menu and select the **Uninstall MAGic** option in the **MAGic** submenu.

MAGic Program Group

To see the MAGic program group, click the **Start** button and choose **Programs, MAGic**. The contents of the MAGic program group display in the **MAGic** submenu.



Within the MAGic program group, you will find the following:

- **FSReader Demo** - Starts FSReader Demo. This program allows you to listen to DAISY books created by Freedom Scientific. The MAGic Basic Training is available in DAISY format. You can install this book when you install MAGic. After you start FSReader, open the **File** menu and choose **Open**. You can listen to the included "FSReaderGettingStarted" DAISY book to learn how to use the program.
- **Help** – Opens the online help system.

- **MAGic** – Launches the MAGic program.
- **View Readme.txt** – The MAGic Readme.txt contains important information regarding installing and uninstalling MAGic, starting MAGic, technical notes and known issues, video card compatibility, and contact information for Freedom Scientific.

Tools Folder

This folder contains the following MAGic utilities:

- **Dongle Viewer** – Allows you to view license information for the dongle currently connected to your computer. For more information on using a dongle to authorize MAGic, refer to *Dongle Authorization* on page 12.
- **Installation Maintenance** – Allows you to modify, repair, or remove MAGic. Use the **Modify** option to change the languages that you have installed with MAGic. This is also a useful setting for troubleshooting. Use the **Repair** option to reinstall MAGic. Use the **Remove** option to uninstall MAGic from your system.
- **MAGic Network Administrator** - Network administrators use this to add, delete, and modify user settings of MAGic in a network environment.
- **Uninstall MAGic** – Used to uninstall MAGic from your computer.
- **Video Intercept** - Allows you to install/uninstall Video Intercept and displays information about your computer's display adapter, video chain, and Display Chaining Manager (DCM) compliant drivers.
- **ILM Authorization Viewer** - Allows you to view details of your ILM software licenses.
- **Remove Product Activation** - Allows you to delete your ILM licenses for all versions of MAGic installed on this computer. Until you acquire a new license, you will only be able to use MAGic in 40 minute mode.

Explore MAGic

This folder provides shortcuts to folders containing your user settings, shared settings, and program files.

- **Explore My Settings** - Opens the folder containing your user-specific MAGic settings. When you create new schemes or modify factory schemes, MAGic saves them in this folder. Your custom settings are also saved in this folder.
- **Explore Program Files** - Opens the folder where you installed MAGic, allowing you to access the program files.
- **Explore Shared Settings** - Opens the folder containing your shared MAGic settings. Factory schemes and default factory settings are saved in this folder.

Starting MAGic


MAGic gives you a variety of ways to start the program.

- Press the hot key, **ALT+CTRL+M**, which is automatically assigned when you install MAGic.
- Double-click the MAGic icon on your desktop.
- From the **Start** menu, choose **Programs**, open the **MAGic** submenu, and choose **MAGic**.

After you start MAGic for the first time, you can choose to run the program when Windows starts. To do this, open the **File** menu, choose **Preferences**, and select the **Run MAGic at Startup** check box.

Quitting MAGic

To quit MAGic, do one of the following:

- Press **ALT+F4**
- Click the  in the top right hand corner of the window.
- Select **Exit** from the **File** menu.

Tip: If you want MAGic to ask you to save your settings when you quit, open the **File** menu and choose **Preferences**. Select the **Prompt to Save Settings on Exit** check box.

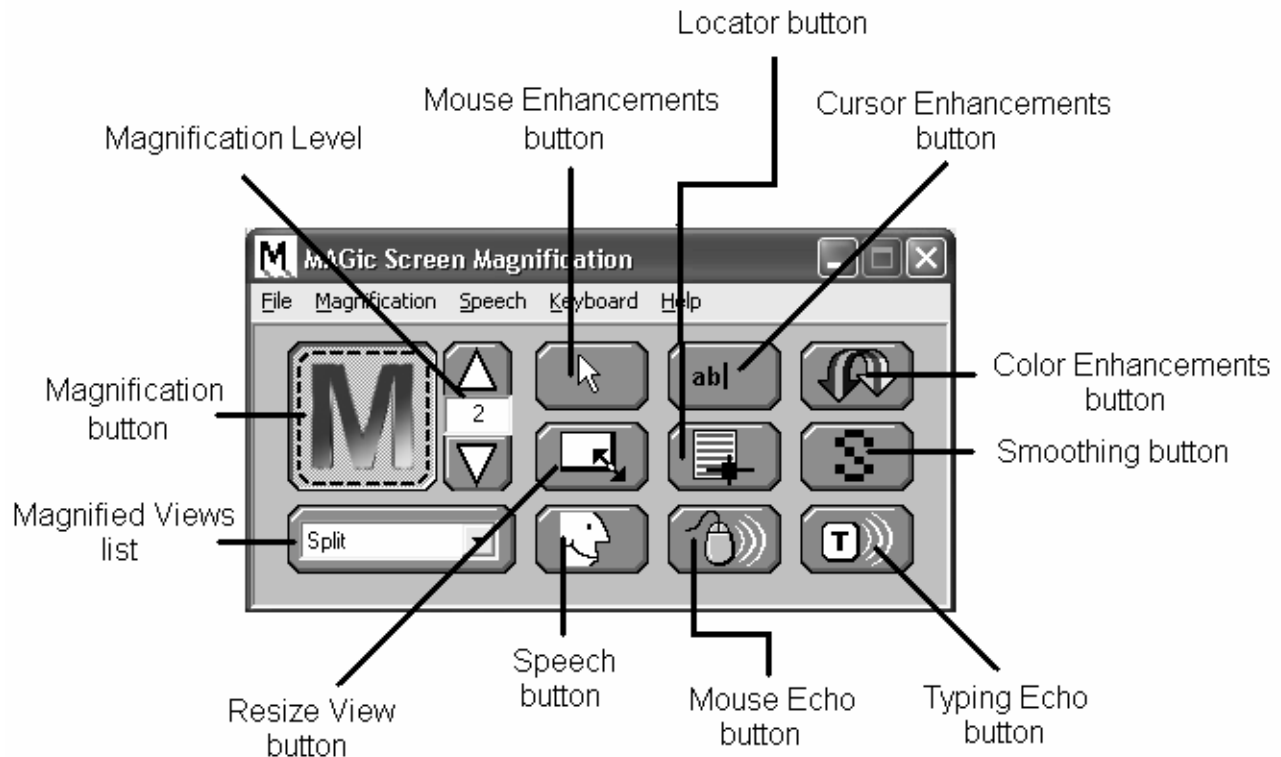
Overview of MAGic for New Users

Start MAGic by pressing **ALT+CTRL+M** or by double-clicking the MAGic program icon on your Windows desktop. You can also start MAGic by opening the **Start** menu, choosing **Programs, MAGic** and then selecting **MAGic**.

When you first start MAGic, your screen is displayed in 2× magnification using the Full view. Speech will also be enabled. You can change the magnification level, magnified view, speech, and many other options by using the MAGic user interface.




The user interface is a small window that allows you to control all aspects of MAGic. This window contains the magnification and speech buttons in addition to the MAGic menu and title bars. The user interface is shown below.






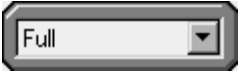



For more information on the MAGic user interface, please refer to *Chapter 3 User Interface*.



Magnification and Speech Buttons

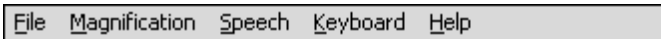
One of the first things you will notice about the user interface are the rows of blue and orange buttons. The blue buttons control magnification features while the orange buttons control speech. Below are brief descriptions of each button.

Button	Function
	Use the Magnification button to enable or disable magnification.
	The current magnification level can be adjusted with the two Magnification Level buttons. The number in the box shows the current magnification level.
	Use the Mouse Enhancements button to enable/disable enhancements and modifications for your mouse pointer. These enhancements make the mouse pointer easier to track and maneuver on your screen.


Button	Function
	<p>Use the Cursor Enhancements button to enable/disable enhancements for your cursor. These enhancements make the cursor easier to follow when editing or writing text.</p>
	<p>Use the Color Enhancements button to enable/disable color enhancements. This feature allows you to replace colors, adjust the brightness and contrast, apply tinting, and invert the brightness and colors of your display.</p>
	<p>Use the Locator button to enable/disable the Locator function. The Locator function allows you to find items on your screen.</p>
	<p>Use the Smoothing button to enable/disable smoothing. This feature smoothes the appearance of jagged letters in a magnified state.</p>
	<p>The Resize View button allows you to change the dimensions of your magnified view.</p>
	<p>Select your preferred magnified view from the Magnified Views list.</p>
	<p>Use the Speech button to enable or disable speech.</p>
	<p>Use the Mouse Echo button to toggle the mouse echo feature on and off. Mouse echo enables MAGic to read text that you point at with the mouse.</p>
	<p>Use the Typing Echo button to enable or disable typing echo. If typing echo is enabled, MAGic announces the words or characters you type.</p>

MAGic Menus

Located above these buttons is the menu bar. The menu bar allows you to customize speech, magnification, and your keyboard. You can also view help information and perform other functions. Each menu is described below.



Menu	Purpose
<u>F</u>ile	The File menu allows you to save your settings and restore the original Freedom Scientific settings. You can also use this menu to change your MAGic preferences.
<u>M</u>agnification	The Magnification menu allows you to customize how you view your screen with MAGic . You can also change mouse options, panning settings, view properties, and more.
<u>S</u>peech	You can customize MAGic's speech components to fit your particular needs. The Speech menu allows you to customize how you read text with MAGic .
<u>K</u>eyboard	The Keyboard menu allows you to customize how you use your PC's keyboard with MAGic . You can re-assign the MAGic Key to a different key or manage shortcut keys.
<u>H</u>elp	The Help menu provides you with detailed help information for the various MAGic functions and options. You can also view information on the newest features for this release and see your current MAGic version.

Most of these commands display a dialog box that allows you to customize certain aspects of MAGic. You can press **F1** or use the  button to get help on any option in the dialog box. From the MAGic user interface, you can select **Help Topics** from the **Help** menu to view the complete online help system which provides a full-text search, index, and table of contents to help you find the information you need. For more information on MAGic Help, refer to *Getting Help* on page 24.

The MAGic Key

The **MAGic Key** is the **CAPS LOCK** key on your keyboard. Pressing the **MAGic Key** in combination with other keys activates a number of MAGic commands. If you want to assign the **MAGic Key** to a different key on your keyboard, open the **Keyboard** menu and choose **MAGic Key**. For more information, refer to *MAGic Key* on page 86.

Hot Keys

In addition to the menus and magnification/speech buttons, there are a number of keyboard hot keys you can use at any time to read text, change how MAGic magnifies your screen, or perform a variety of other functions. For a complete list of hot keys, refer to *Appendix C MAGic Hot Keys* on page 101.

Reading Text with MAGic

MAGic can use synthesized speech to read text that appears on your screen, including documents, menus, dialog boxes, e-mail messages, Web pages, and more. Additionally, MAGic can highlight the text as it is spoken. To customize MAGic's speech, use the commands available on the **Speech** menu.

<p>Tip: You can silence MAGic's speech at any time by pressing CTRL. To toggle speech on or off, press MAGic Key+F3.</p>

Using the Mouse to Read Text

Mouse echo is a feature that allows you to read text with your mouse. To use mouse echo, just move your mouse pointer to some text on your screen and then stop. After a short delay, **MAGic** will speak the word you pointed to. You can use the **Mouse Echo** button to enable or disable this feature. For more information, refer to *Mouse Echo* on page 76.

Using the Keyboard to Read Text

MAGic has a number of different keystrokes that let you use the keyboard to read text. To use these keystrokes, move your insertion point or mouse pointer to any location within the document. Then press one of the following key combinations to read from that location:

- To begin reading from your current location, press **MAGic Key+SPACEBAR** or **INSERT+DOWN ARROW**.
- To read the current word, press **MAGic Key+ALT** or **INSERT+NUM PAD 5**. To spell the current word, press the keystroke twice quickly.
- To read the next word, press **INSERT+RIGHT ARROW**. To read the previous word, press **INSERT+LEFT ARROW**.
- To read the current line, press **MAGic Key+L** or **INSERT+UP ARROW**. To read from the beginning of the line to the current position of the cursor, press **INSERT+HOME**. To read from the current position of the cursor to the end of the line, press **INSERT+PAGE UP**.
- To read the current sentence, press **MAGic Key+S**. To read the next sentence, press **MAGic Key+SHIFT+S**.
- To read the current paragraph, press **MAGic Key+P**.
- To begin reading a column of text from your current location, press **MAGic Key+C**.
- To read the current color block, press **MAGic Key+CTRL**. **MAGic** reads any connected words with the same foreground and background colors. You can use this command to read text that you have selected.

- To hear the contents of the Clipboard, press **MAGic Key+X**.

Note: By default, the **MAGic Key** is assigned to the **CAPS LOCK** key. To change this, open the **Keyboard** menu and choose **MAGic Key**. Refer to *MAGic Key* on page 86 for more information.

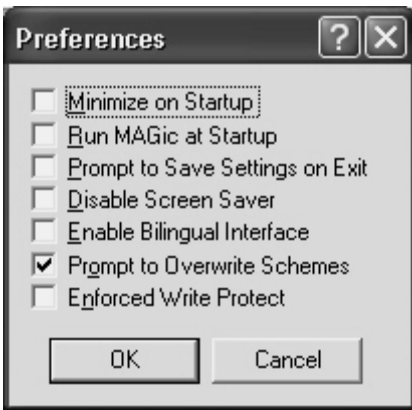
When you read text with these keystrokes, **MAGic** highlights the word it is currently speaking. To change the color and/or style of this highlighting, open the **Speech** menu and choose **Document and Text Reading**. For more details, see *Document and Text Reading* on page 83.

Typing Echo

If typing echo is enabled, **MAGic** repeats each character or word that you type. **MAGic** also speaks the character to the right of the insertion point when you use the arrow keys to move through text. You can use the **Typing Echo** button to enable or disable this feature. For more information, refer to *Typing Echo* on page 77.

Changing your Preferences

From the **File** menu, choose **Preferences** to change the way you use **MAGic** on your computer. You can use this dialog box to start **MAGic** when your computer starts, disable your screen saver while **MAGic** is running, minimize **MAGic** when it starts, enable/disable the bilingual user interface, specify whether **MAGic** should prompt you before overwriting schemes, and determine whether **MAGic** asks you to save your settings when you quit. After you close this dialog box, you must choose **Save Settings** from the **File** menu to save any changes you made to your preferences.



Minimize on Startup

If you select the **Minimize on Startup** check box, the **MAGic** user interface will be minimized when you start the program. Click **MAGic Screen Magnification** in the taskbar or press **MAGic Key+U** to display the user interface.

Run MAGic at Startup

If you select the **Run MAGic at Startup** check box, **MAGic** automatically starts when you start Windows.

Prompt to Save Settings on Exit

Select the **Prompt to Save Settings on Exit** check box if you want **MAGic** to ask you to save your settings when you quit the program or shut down your computer. If you do not select this check box, you must press **CTRL+S** or open the **File** menu and choose **Save Settings** to save your settings.

Disable Screen Saver

Select the **Disable Screen Saver** check box if you want to prevent your screen saver from starting while **MAGic** is running. Your screen saver will be enabled again when you quit **MAGic**.

Enable Bilingual User Interface

Select the **Enable Bilingual User Interface** check box to change the language of MAGic's menus, dialog boxes, and online help system when you switch to your secondary language. The resource files for the secondary language must be installed in order to use this feature. Clear this check box if you do not want to change the language of MAGic's user interface when you switch to your secondary language with **MAGic Key+F11**. To change your secondary language, open the **Speech** menu, choose **Voices**, and move to the **Secondary Language** tab.

Note: The current release of MAGic contains only English and Spanish resource files.

Prompt to Overwrite Schemes

Select the **Prompt to Overwrite Schemes** check box if you want MAGic to ask for confirmation before saving a mouse, cursor, or color enhancements scheme with the same name as an existing scheme. If you do not select this check box, MAGic will save the new scheme over the old scheme without asking for confirmation.

Note: Different types of schemes can have the same name. For example, a cursor enhancement scheme can have the same name as a mouse enhancement scheme.

Run MAGic from System Tray

Select the **Run MAGic from System Tray** check box if you do not want the MAGic window to appear in the Windows taskbar with other programs that you are currently using. In addition, the MAGic window does not appear in the list of active windows when you press **ALT+TAB**. An icon appears in the Windows system tray (located in the bottom right corner of the screen) to indicate that MAGic is running. Double-click this icon or press **MAGic Key+U** to display the MAGic program window. If you minimize the MAGic window, it is removed from the taskbar again.

Note: You must restart MAGic before any change to this option can take effect.

Enforced Write Protect

It is recommended that you leave the **Enforced Write Protect** check box cleared if you use your computer for multi-session work, such as Citrix/Terminal Services remote access or fast user switching. You should also leave this check box cleared if your network administrator uses service management software to install updates or make changes to your computer remotely. If you select this check box, your network administrator cannot update or modify MAGic files remotely.

Getting Help

Online Help System

To access MAGic's online help system, select **Help Topics** from the **Help** menu, which is located on the menu bar of the MAGic application window. Use the **Contents** tab to navigate the help system. Use the **Index** or the **Search** tabs to search for specific topics within the help system. If you want MAGic to read the help topics to you, position the mouse pointer toward the beginning of the help page, and press **MAGic Key+SPACEBAR**. You can move to the next topic by clicking the "Next" link at the bottom of the page. To return to the previous topic, click the "Back" link.

What's This? Help

MAGic's What's This? help is context-sensitive help that you can use as a reference when working with MAGic's user interface or dialog boxes. Press **SHIFT+F1** on any button on the user interface, or control in a dialog box to see a brief description of the purpose of the control and how to use it.

MAGic User's Guide

We provide you with the content of the MAGic online help system in the *MAGic User's Guide*, which is printed in large text for easier reading. This book contains detailed descriptions of MAGic's features, and also pull-out reference cards.

MAGic Basic Training

Listen to the MAGic Basic Training to learn the fundamentals of using MAGic Screen Magnification. For more information, see *Basic Training* on page 26.

Technical Support

If you do not find the answers to questions or problems that you have, contact Freedom Scientific Technical Support, (727) 803-8600.

About MAGic

Select **About MAGic** from the **Help** menu on the MAGic user interface to view the version number of MAGic you are currently running.

Basic Training

The basic training for MAGic is included in DAISY format on your MAGic program CD. When you install MAGic, you are also asked if you want to install these materials. You can listen to and read the training modules by using the FSReader Demo DAISY reader included with MAGic. To start FSReader Demo, open the **Start** menu, open the MAGic program group, and choose **FSReader Demo**. Alternatively, you can open the **MAGic Help** menu and choose **Training**.

After you start FSReader Demo, a list of all DAISY books in the current folder appears. To begin the basic training, select the "MAGic_Basic_Training" DAISY book and choose **Open**. For more information on using FSReader, select the "FSReaderGettingStarted_JAWS_MAGic" DAISY book and choose **Open**.

These training modules are designed to give you a basic overview of MAGic. You will learn how to change your magnification and speech preferences, along with several other techniques. All users are encouraged to take advantage of this training.

Note: FSReader does not support Windows NT 4.0.

Use Your Mouse and Your Keyboard

With MAGic, you can use both your mouse and your keyboard to access most features. You decide what is best for you. Many people use a combination of the two. The MAGic documentation gives you information on how to perform actions with both the keyboard and the mouse. For example, you can either press **ALT+F** to access the **File** menu, or you can point and click the word *File* with the mouse.

Using the Keyboard with MAGic

The MAGic Key

When you use the keyboard in MAGic, the most important thing to know is the **MAGic Key**. The default **MAGic Key** is the **CAPS LOCK** key on your keyboard. Using the **MAGic Key** in combination with other keys activates a MAGic command if one is assigned, otherwise it will pass the key combination through to the application. Pressing the **MAGic Key** by itself and releasing it will not carry out any action. You can specify what key you use for your **MAGic Key** in the **MAGic Key** dialog box, which is activated from the **Keyboard** menu. Your choices include: **Extended INSERT** (found on the six pack), **NUM PAD INSERT**, either **INSERT**, or **SCROLL LOCK** (the key just above **HOME**).

Pass the MAGic Key Through

If your **MAGic Key** is set to the default of **CAPS LOCK**, how do you use your **CAPS LOCK** key as usual?

Press the **CAPS LOCK** key twice quickly, and caps lock will turn on. To turn off caps lock, press the key twice quickly. Use this double key press to pass through any of the **MAGic Keys** that you use. For instance, if you select **INSERT** as your **MAGic Key**, press the **INSERT** key twice to use the actual insert function.

Pass Through Key Command

If you have an application that uses the same keystroke combination as one assigned to **MAGic**, you can pass the keystroke combination through to the application, so it will not function as a **MAGic** keystroke in that instance.

Press **MAGic Key+3** (on the numbers row), and then press the keystroke you want to use in the application. Use the Pass Through command for any key combination that is used in **MAGic** and in other applications.

With **MAGic**, you can customize all of your keystrokes in the **Keyboard Assignments** dialog box, activated from the **Keyboard** menu. If you specify certain keystrokes for use in **MAGic**, you may need to use these keystrokes in other applications. Keep the Pass Through command of **MAGic Key+3** in mind when you customize keystrokes.

Customizing the Keyboard

The **Keyboard** menu allows you to customize how you use your PC's keyboard with **MAGic**. This menu allows you to re-assign the **MAGic Key** to a different key and manage shortcut keys. The **Keyboard** menu provides the following options:

- Choose **MAGic Key** from the **Keyboard** menu to change which key is assigned to the **MAGic Key**.
- Choose **Keyboard Assignments** from the **Keyboard** menu to view the current hot keys assigned to actions, assign different hot keys, remove hot keys, or restore the hot keys to the default settings.

Refer to *Chapter 6 Keyboard* for detailed information on these commands.

Using the Mouse with MAGic

Point and Click

With MAGic you don't have to learn keystrokes to perform actions. You can use the mouse to point at items on the user interface, and click the buttons to activate features. For example, to enable mouse enhancements, just point at the **Mouse Enhancements** button and press the left mouse button.

If you are not sure how to activate a feature, use your mouse to open the menus and find the feature you need.

Left Click vs. Right Click

The left mouse button is the more commonly used mouse button, because it activates buttons and menus. Alternatively, the right mouse button provides useful shortcuts to many items found under MAGic's menus.

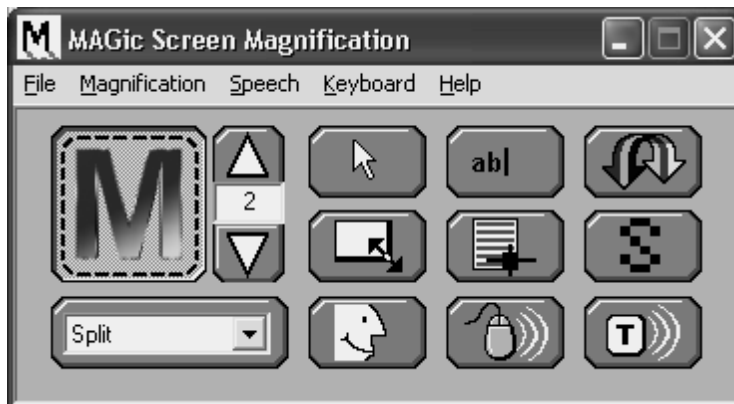
You can right-click many of the buttons on the user interface to see a context menu. Depending on where you right-click on the user interface, the menus change. Use your right mouse button to access the most common features associated with the buttons on the MAGic user interface.

If you are not a mouse user, you can activate context menus with the **APPLICATION Key** on the keyboard. Locate the **APPLICATION Key** just to the left of the right **CTRL** key in the bottom row on your main keypad. Use the **TAB** key to place the focus on the button that you want to see the context menu for, and press the **APPLICATION Key** to open the menu. Then use the **UP** and **DOWN ARROWS** to move through the menu choices.

Chapter 3 User Interface

The **MAGic** user interface contains everything you need to customize magnification and speech to fit your needs. The user interface automatically opens when you launch **MAGic**. If you want to make the user interface active while you are working in another window, click **MAGic Screen Magnification** in the Windows taskbar or press **MAGic Key+U**.

The **MAGic** user interface consists of the title bar, the menu bar, and the Quick Access Window.





The title bar is the bar across the top of the application, which says, “**MAGic** Screen Magnification.” The menu bar is located just below, and contains the **File**, **Magnification**, **Speech**, **Keyboard**, and **Help** menus. The Quick Access Window is the main area of the user interface.

Title Bar

Locate the **MAGic** title bar at the very top of the window. It reads, “**MAGic** Screen Magnification.” Press **MAGic Key+T** or **INSERT+END** to hear the text of the title bar. If speech is not enabled you will not hear anything.



Click the **M** icon on the left side of the title bar, or press **ALT+SPACEBAR** to see the control menu, which includes options to Move, Minimize, and Close. Click the  button, or press **ALT+SPACEBAR, N** to minimize the application. Click the  in the top right corner, or press **ALT+F4**, to exit MAGic.

Menu Bar

The MAGic menu bar contains five menus: **File**, **Magnification**, **Speech**, **Keyboard**, and **Help**.



File Magnification Speech Keyboard Help

Tip: To open these menus with the keyboard, press **ALT** and the underlined letter. For example, press **ALT+F** to open the **File** menu.

The **File** menu contains the following commands:

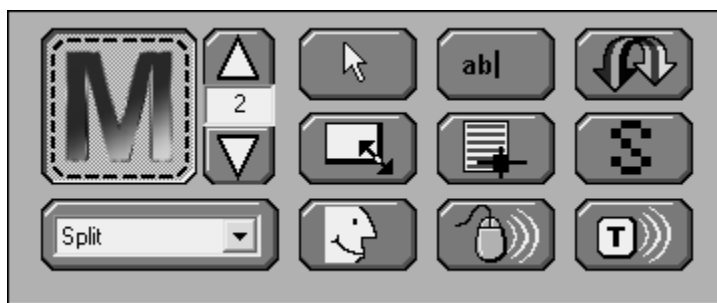
- **Preferences** – This command lets you change your preferences for MAGic. For more information, refer to *Changing your Preferences* on page 20.
- **Save Settings** – When you change options found in the **Magnification** and **Speech** menus, select **Save Settings** to store your preferences for the next time you run MAGic.
- **Restore Factory Settings** – Select this menu item to reset MAGic options to the state they were in when you installed MAGic. Selecting this option returns all features to the original settings, except hot keys that you customized. Activate the **Restore Defaults** button in the **Keyboard Assignments** dialog box to revert all hot keys to their original configurations.
- **Exit** – Choose **Exit** to quit MAGic.

Find information about the **Magnification**, **Speech**, and **Keyboard** menus in *Chapter 4 Magnification*, *Chapter 5 Speech*, and *Chapter 6 Keyboard*.

Quick Access Window

MAGic's Quick Access Window provides controls to help you easily access the main MAGic features. Use the buttons on the user interface to control both magnification and speech. Left click the button to activate the feature, and right-click the button to see a context menu for some of the buttons.

Tip: If you want to use the keyboard with the Quick Access Window, press **TAB** to move through the buttons and options. Press **SPACEBAR** to activate the selected button, or press the **APPLICATION** Key to open the context menu.



The Magnification Buttons

Use the blue buttons on the MAGic user-interface to control magnification.

Magnification Button

Use this button to enable or disable magnification.



Use the **Magnification** button to turn magnification on or off. If the **M** on the magnification button is animated, then magnification is turned off.

Hot Keys

Enable or Disable
Magnification

MAGic Key+DELETE

Magnification Level Buttons

Increase or decrease the magnification level with these buttons.



The upper button, with the upward arrow image, increases the magnification level, while the lower button, with the downward arrow image, decreases the magnification level. The number between the two buttons shows the current magnification level. The default level of magnification is 2× (2× is equivalent to two times the normal screen display). If you press the **TAB** key to move into the area where the number appears, use your **UP** and **DOWN ARROW** keys to increase or decrease magnification.

It is possible to change the magnification level to 1. This allows you to continue using magnification features, such as mouse, cursor, and color enhancements, while viewing the entire screen area. You can also choose from nine incremental magnification levels between 1× and 2× magnification.

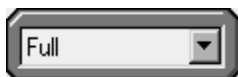
Hot Keys

Increase Magnification **MAGic Key+NUM PAD PLUS**
or **CTRL+EQUALS**

Decrease Magnification **MAGic Key+NUM PAD MINUS**
or **CTRL+DASH**

Magnified Views List

Select your favorite magnified view from the list on the MAGic user-interface.



You can select **Full**, **Lens**, **Dynamic Lens**, **Overlay**, or **Split** for your magnified view. Full magnifies the entire screen, while each of the others only magnifies a portion of your screen at a time. Right-click the **Magnified Views** list to quickly access the properties for the Split, Lens, Dynamic Lens, or Overlay views.

Mouse Enhancements Button

Apply enhancements to your mouse pointer with this button.



Use the **Mouse Enhancements** button to enable/disable enhancements and modifications for your mouse pointer. These enhancements make the mouse pointer easier to track and maneuver on your screen. To specify which enhancements you want to use, open the **Magnification** menu and choose **Mouse Enhancements**.

Tip: You can right-click this button to quickly choose a new mouse enhancements scheme or customize the appearance of the mouse in the magnified or unmagnified area of the screen. For more information on mouse enhancements, refer to *Mouse Enhancements* on page 44.

Hot Keys

Toggle Mouse Enhancements **MAGic Key+F4**

Cursor Enhancements Button

Apply enhancements to your cursor with this button.



Use the **Cursor Enhancements** button to enable/disable enhancements for your cursor. These enhancements make the cursor easier to follow when editing or writing text. To specify which enhancements you want to use, open the **Magnification** menu and choose **Cursor Enhancements**.

Tip: You can right-click this button to quickly choose a new cursor enhancements scheme or customize the appearance of the cursor in the magnified or unmagnified area of the screen. For more information on cursor enhancements, refer to *Cursor Enhancements* on page 47.

Hot Keys

Toggle Cursor Enhancements **MAGic Key+F8**

Note: Cursor enhancements are not available in Windows 95, 98, or ME.

Color Enhancements Button

Change how your screen displays colors with this button.



Use the **Color Enhancements** button to enable/disable color enhancements. This feature allows you to replace colors, adjust the brightness and contrast, apply tinting, and invert the brightness and colors of your display. You can apply color enhancements to the magnified area, unmagnified area, or both. To specify your color enhancement settings, open the **Magnification** menu and choose **Color Enhancements**.

Tip: You can right-click this button to quickly choose a new color enhancements scheme or customize your color enhancements for the magnified or unmagnified area of the screen. For more information on color enhancements, refer to *Color Enhancements* on page 53.

Hot Keys

Toggle Color Enhancements **MAGic Key+F12**

Note: If you are using Windows 95, 98, or ME, choosing the **Color Enhancements** button or pressing **MAGic Key+F12** inverts the colors of the screen instead of toggling color enhancements.

Resize View Button

*When working in Split, Overlay, or Lens, or Dynamic Lens views, use the **Resize View** button to resize or move the view.*



You must be in the Split, Overlay, Lens, or Dynamic Lens view, and magnification must be active to use the **Resize View** button. When the **Resize View** button is available it appears blue. If it is gray, you need to turn on magnification, by choosing the **Magnification** button on the MAGic user interface. After you choose the **Resize View** button, notice that the cursor changes shape, and that MAGic automatically minimizes the user-interface. The shape of the mouse indicates in which direction you can click and drag your mouse to move or resize your view.



If the pointer appears as an X, like above, it is not positioned over the view or one its borders. The X indicates that from this position the view cannot be resized or moved.



A bi-directional cross indicates the ability to move the view to a different location on your screen. Click the view, and while holding the mouse button down drag the view to another location. Split view only moves to the top, bottom, left, or right edge of your screen, while you can move Overlay to any location on your screen.



A vertical pointer indicates that resizing will occur in a vertical direction, larger or smaller.



A horizontal pointer indicates that resizing will occur in a horizontal direction, either larger or smaller.



A diagonal pointer indicates that resizing will occur in both vertical and horizontal directions. MAGic only exhibits the diagonal mouse when you position the mouse over the corner of the view. The diagonal pointer is only available for the Overlay, Dynamic Lens, and Lens views.

Locator Button

Activate the Locator with this button.



Use the **Locator** button to activate the Locator, which you can use to find items on your screen. Move the Locator with your mouse or your arrow keys. Change the properties of the Locator with the **Locator Properties** dialog box, which you can access from the **Magnification** menu. Also you can right-click the **Locator** button to change the style and border of your Locator.

Hot Keys

Enable Locator Mode **MAGic Key+F10**

Disable Locator Mode **ESC**

Smoothing Button

Toggle Smoothing on or off with this button.



Choose the **Smoothing** button to smooth the appearance of jagged letters in a magnified state. Choose the button again to turn smoothing off.

The Speech Buttons

The three orange buttons at the bottom right of the MAGic user-interface allow you quick access to MAGic's speech capabilities. From here, you can enable or disable speech, mouse echo, and typing echo.

Speech Button

Click this button to enable or disable speech.



If the button appears with the mouth opened, like this one, then speech is enabled.



If the button appears with the mouth closed, then speech is disabled.

Right-click the **Speech** button to switch between your primary and secondary languages or to customize how MAGic speaks.

Hot Keys

Toggle Speech

MAGic Key+F3

Mouse Echo Button

Click this button to toggle the Mouse Echo.



If the button appears with white lines to the right, mouse echo is turned off.



If the button appears with black lines to the right, mouse echo is turned on. To set mouse echo to announce lines or words, right-click the button and make your selection from the context menu. You can also set mouse movement to stop speech from this context menu.

Hot Keys

Mouse Echo Toggle

MAGic Key+M

Typing Echo Button

Click this button to toggle the Typing Echo on and off.



If the **Typing Echo** button appears to have white lines extending from the right side, then typing echo is turned off.

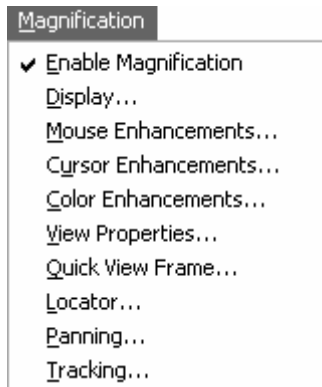


If the **Typing Echo** button has black lines extending from the right side, then typing echo is turned on. To specify the typing echo to words or characters, you need to activate the **Typing Echo** dialog box from the **Speech** menu, or right-click and choose **Automatically Speak**. Choosing **Keystrokes to Echo** lets you modify how much MAGic echoes back to you.

Magnification Features

With MAGic's extensive magnification features, you can customize your display to fit your low vision needs.

The **Magnification** menu, found on the menu bar, contains all of the controls to change the appearance of your display.



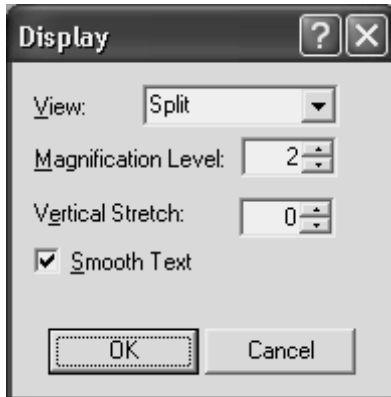
The first item on the **Magnification** menu, **Enable Magnification**, lets you activate or deactivate magnification. If the menu item appears with a checkmark next to it, magnification is enabled. If there is no checkmark, magnification is disabled.

Remember that the blue buttons on the user-interface allow you quick access to the basic magnification features.

The Magnification Menu

Display

From the **Magnification** menu, choose **Display** to change the magnified view, magnification level, amount of vertical stretch, and text smoothing.



View

Select the magnified view you want to use. Each view is described briefly below.

Tip: To change the properties for these views, open the **Magnification** menu and choose **View Properties**.

- **Full** magnifies the entire screen.
- **Lens** opens a small rectangular window, which is magnified, while leaving the remaining desktop unmagnified. The lens moves around the screen as you move your mouse or when the focus moves.
- **Overlay** creates a magnified window on the corner of the screen, while the rest of the screen remains unmagnified. This is similar to the Lens View, although the Overlay View does not move around the screen.

- **Dynamic Lens** opens a small rectangular window, which is magnified, while leaving the rest of the screen unmagnified. This window follows the mouse pointer or your current location within a document or dialog box if you are using the keyboard. In addition, when you move to a dialog box option or menu command, **MAGic** automatically resizes the lens so that it only magnifies the currently selected item.
- **Split** allows you to see both an unmagnified area and a magnified one at the same time. The Split View opens a magnified window on part of your screen, but leaves the other part unmagnified as a reference.

Views with Level 1 Magnification

You can use all of the magnified views in any magnification level, including 1×. Using these views with level 1 magnification can be helpful if you invert the colors of either the magnified or unmagnified area. You then have two images, one with normal colors, and one with inverted colors.

To quickly switch from your current magnification level to 1x magnification, press **MAGIC Key+DELETE+SHIFT**. You can carry out this command again to switch back to your previous magnification level.

Magnification Level

Press the **UP** or **DOWN ARROW** keys to increase or decrease the current magnification level. Magnification levels range from the same size as the normal display, all the way up to 16 times the size of the normal display.

Tip: You can choose from nine incremental magnification levels between 1× and 2× magnification.
--

Vertical Stretch

Vertical stretch allows you to stretch the display to make images taller while maintaining the character's current width.

Smooth Text

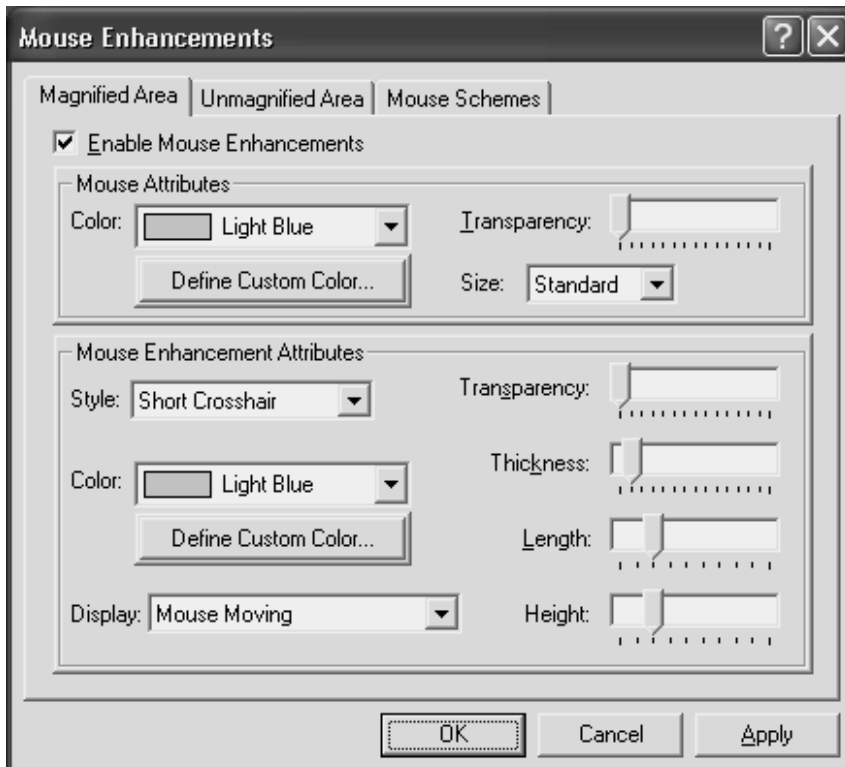
Smoothing compensates for the stair-step effect that occurs as screen objects get larger during magnification. Smoothing is on by default. You can turn smoothing on or off with the **Smoothing** check box.

Mouse Enhancements

From the **Magnification** menu, choose **Mouse Enhancements** to control the appearance of your mouse in the magnified and unmagnified areas of your screen. Mouse enhancements make the mouse pointer easier to track and maneuver on your screen. The **Magnified Area** and **Unmagnified Area** tabs provide the same enhancement options.

The **Mouse Schemes** tab lets you save your cursor enhancements settings as a scheme or switch to a different scheme. For more information on schemes, refer to *Using Schemes* on page 47.

Select the **Enable Mouse Enhancements** check box on any of the tabs in this dialog box to apply enhancements to the mouse pointer. Clear this check box to disable mouse enhancements. You can also use the **Mouse Enhancements** button to enable or disable mouse enhancements.



Mouse Attributes

The options in the **Mouse Attributes** area allow you to customize the appearance of your mouse pointer.

Color

Select a color for your mouse pointer in the **Color** list. To use the original system colors for the mouse pointer, choose **Original**. To invert the brightness or colors of screen areas covered by the mouse pointer, choose **Invert Brightness** or **Invert Colors**.

To choose from additional colors, activate the **Define Custom Color** button and choose one of the available colors from the palette.

Transparency

Use the **Transparency** slider to adjust the transparency level of the mouse pointer. A higher level of transparency allows you to see text and images beneath the area covered by the mouse pointer.

<p>Note: You cannot change the transparency if you are using Windows 95, 98, or ME.</p>
--

Size

You can use the **Size** list to increase the proportions of the mouse pointer. Choose from standard size or large size.

Mouse Enhancement Attributes

Enhancements are used to further modify the mouse pointer by making it easier to locate and maneuver on the screen.

Style

In the **Style** list, choose one of the following enhancement types to apply to your mouse pointer:

- **Short Crosshair** - Displays intersecting horizontal and vertical bars that are centered on your mouse pointer. You can adjust the size of these bars by using the **Length** and **Height** sliders.

- **Long Crosshair** - This style is similar to short crosshair, but the horizontal and vertical bars extend to the edges of the view.
- **Oval** - Displays an oval around the mouse pointer. You can adjust the size of the oval by using the **Length** and **Height** sliders.
- **Box** - Displays a box around the mouse pointer. You can adjust the size of the box by using the **Length** and **Height** sliders.
- **Oval Scope** - Combines the short crosshair and oval styles.
- **Box Scope** - Combines the short crosshair and box styles.
- **Long Box Scope** - Combines the long crosshair and box styles.
- **Long Oval Scope** - Combines the long crosshair and oval styles.

Color

In the **Color** list, choose a color for the enhancement style you selected. To invert the brightness or colors of screen areas covered by the enhancement, choose **Invert Brightness** or **Invert Colors**. To choose from additional colors, activate the **Define Custom Color** button and choose one of the available colors from the palette.

Display

In the **Display** list, choose when **MAGic** should apply enhancements to the mouse pointer:

- **Always** - The mouse enhancements are always active and visible on the screen.
- **Mouse Moving** - The enhancements are only visible when the mouse pointer is moving.
- **Mouse Not Moving** - The enhancements are only visible when the mouse pointer is stationary.
- **When MAGic Key is Pressed** - The enhancements only appear when you press the **MAGic Key**.

<p>Note: If you are using Windows 95, 98, or ME, the mouse enhancements are always active and visible on the screen.</p>

Transparency

Use the **Transparency** slider to adjust the transparency level of the mouse enhancement. A higher level of transparency allows you to see text and images beneath areas covered by the enhancements.

Note: You cannot change the transparency if you are using Windows 95, 98, or ME.

Thickness

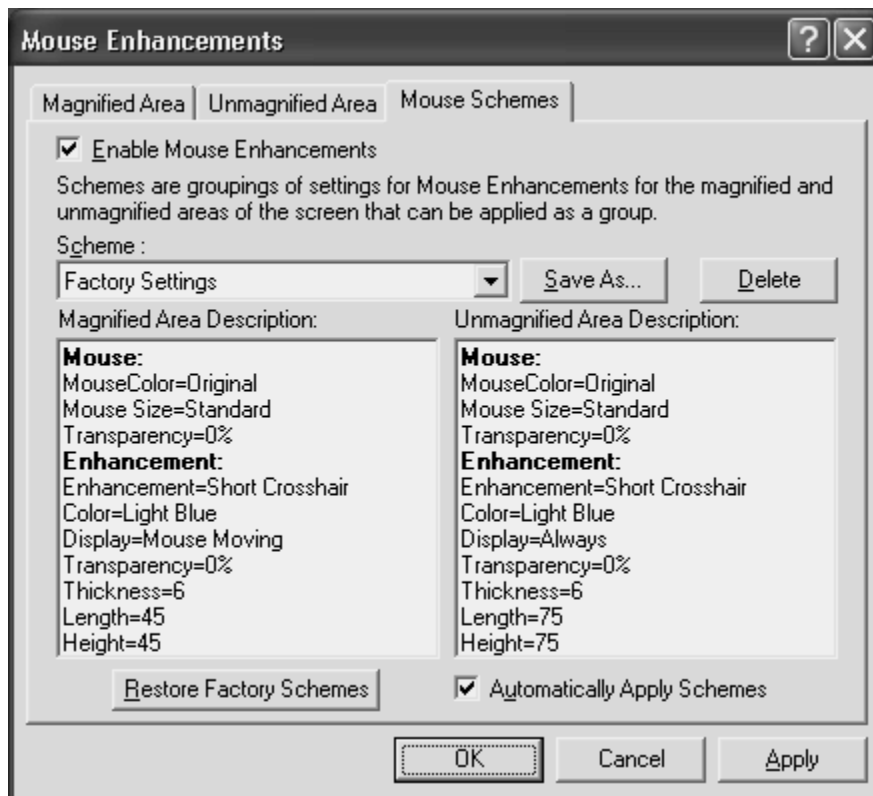
Use the **Thickness** slider to adjust the thickness of the lines of the enhancement style you selected. Increased thickness makes the enhancements easier to see and causes them to stand out more. Decreased thickness causes the enhancements to appear more subdued and lets you see more of the screen.

Length and Height

Use the **Length** and **Height** sliders to adjust the size of the mouse enhancement style you selected. If you selected the oval, box, long oval scope, or long box scope style, these sliders let you control the width and height of the oval or box. If you selected the short crosshair style, these sliders let you change the length and height of the horizontal and vertical bars.

Using Schemes

A scheme is a group of settings that can be saved and used in certain programs or circumstances. Schemes allow you to quickly switch between different configurations of enhancements, according to your current needs. For example, you can create a mouse enhancement scheme specifically for proofreading documents and another scheme for browsing Web pages.



The currently selected scheme is displayed in the **Scheme** list. To switch to a different scheme, choose a new scheme from the list and then click **Apply** or press **ALT+A**. If you select the **Automatically Apply Schemes** check box, **MAGic** applies the new enhancement settings as soon as you select a scheme.

Tip: You can also select a scheme directly from the Quick Access Window. To do this, right-click the **Mouse Enhancements**, **Cursor Enhancements**, or **Color Enhancements** button and then choose a scheme from the context menu.

The **Magnified Area Description** and **Unmagnified Area Description** boxes show the current enhancement settings for the magnified area and the unmagnified area.

Creating New Schemes

To create a new scheme, do the following:

1. Use the **Magnified Area** and **Unmagnified Area** tabs to define enhancement settings for the magnified and unmagnified areas.

2. On the **Mouse Schemes** tab, click **Save As** or press **ALT+S** to create a new scheme based on your current settings.
3. Enter a name for the scheme and then press **ENTER**. The new scheme appears in the **Scheme** list.

Modifying Schemes

To modify an existing scheme, do the following:

1. Select the scheme you want to modify in the **Scheme** list.
2. Change the enhancement settings for the magnified and unmagnified areas.
3. On the **Mouse Schemes** tab, click **Save As** or press **ALT+S**.
4. The name of the currently selected scheme displays in the **Save Scheme** dialog box. Press **ENTER** to save your modifications.

Deleting Schemes

To delete a scheme, do the following:

1. Select the scheme you want to delete in the **Scheme** list.
2. Click **Delete** or press **ALT+D** to delete the currently selected scheme.

Restoring Factory Schemes

Click **Restore Factory Schemes** or press **ALT+R** to revert to the original **Factory Settings** scheme included with **MAGic**. Schemes that you or other users have created remain unchanged.

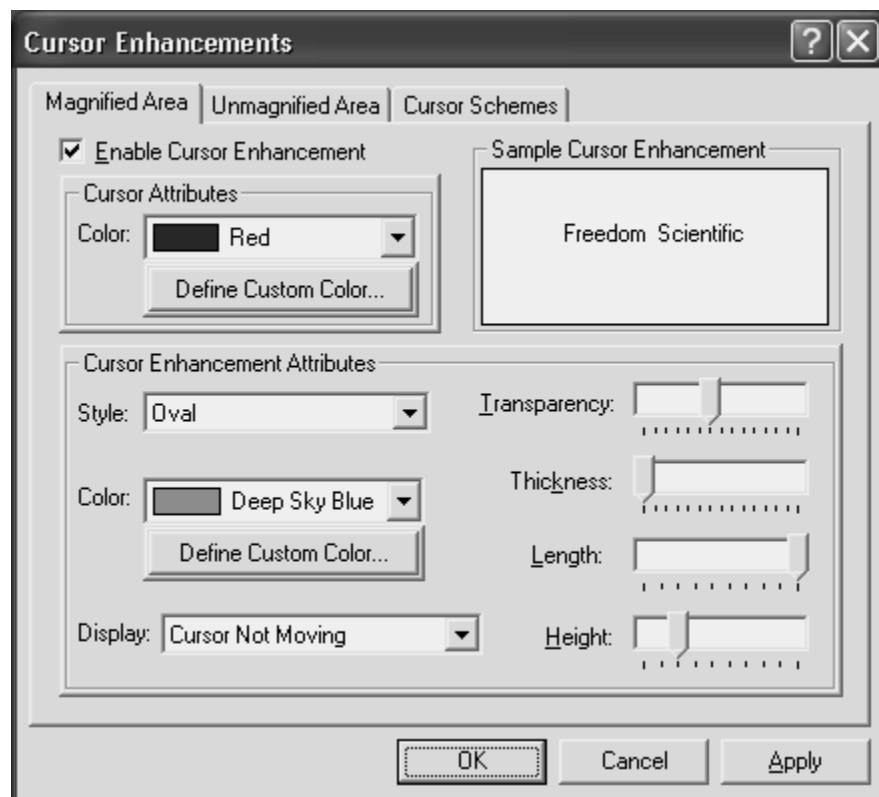
Cursor Enhancements

From the **Magnification** menu, choose **Cursor Enhancements** to customize the appearance of your cursor in the magnified and unmagnified areas of the screen. Cursor enhancements make the cursor easier to follow when editing or writing text. The **Magnified Area** and **Unmagnified Area** tabs provide the same enhancement options.

Note: Cursor enhancements are not available in Windows 95, 98, or ME.
--

The **Cursor Schemes** tab lets you save your cursor enhancements settings as a scheme or switch to a different scheme. For more information on schemes, refer to *Using Schemes* on page 47.

Select the **Enable Cursor Enhancements** check box on any tab in this dialog box to apply enhancements to your cursor. Clear this check box to disable the cursor enhancements. You can also use the **Cursor Enhancements** button to enable or disable cursor enhancements.



Cursor Attributes

In the **Color** list, choose a new color for the flashing cursor that appears when you are typing text into an edit box, document, and so on. To use the original system color for the cursor, choose **Original**. To choose from additional colors, activate the **Define Custom Color** button and choose one of the available colors from the palette.

Sample Cursor Enhancement

This area allows you to preview your cursor enhancement settings. MAGic displays a sample of your current cursor enhancements using the text in this area. This lets you adjust the enhancements to achieve the desired effect before applying them.

Cursor Enhancement Attributes

The **Cursor Enhancement Attributes** area allows you to choose a cursor enhancement style. You can also adjust the appearance and size of the enhancement and when it displays on your screen.

Style

In the **Style** list, choose one of the following enhancement styles:

- **None** - The cursor appears as a blinking vertical bar, with no additional enhancements.
- **Oval** - A small area around the cursor is surrounded by an oval.
- **Triangle** - Two small triangles appear above and below the current position of the cursor.
- **Box** - The immediate area around the cursor is surrounded by a small rectangle.
- **Line** - Perpendicular lines appear beneath the text and a small vertical line indicates the exact position of the cursor.

Color

In the **Color** list, choose a color for the enhancement style you selected. To invert the brightness or colors of screen areas covered by the enhancement, choose **Invert Brightness** or **Invert Colors**. To choose from additional colors, activate the **Define Custom Color** button and choose one of the available colors from the palette.

Display

In the **Display** list, choose when MAGic should apply enhancements to the cursor:

- **Always** - The cursor enhancements are always active and visible on the screen.
- **Cursor Moving** - The enhancements are only visible when the cursor is moving, such as when you are typing text or using the arrow keys.
- **Cursor Not Moving** - The enhancements are only visible when the cursor is stationary.
- **When MAGIC Key is Pressed** - The enhancements only appear when you press the **MAGIC Key**.

Transparency

Use the **Transparency** slider to adjust the transparency level of the cursor enhancement. This is useful if your cursor enhancement frequently obscures the surrounding text. Higher levels of transparency allow you to see text and images beneath the enhancement.

Thickness

Use the **Thickness** slider to adjust the thickness of the cursor enhancement. Thicker cursor enhancements are easier to see and stand out more. Thinner cursor enhancements are more subdued and let you see more of the text.

Length

Use the **Length** slider to adjust the horizontal size of the cursor enhancement style. This affects how much text is included within the oval, box, and line enhancements.

Height

Use the **Height** slider to adjust the vertical size of the cursor enhancement style. This affects the height of the oval and box enhancements and increases the length of the vertical portion of the line enhancement.

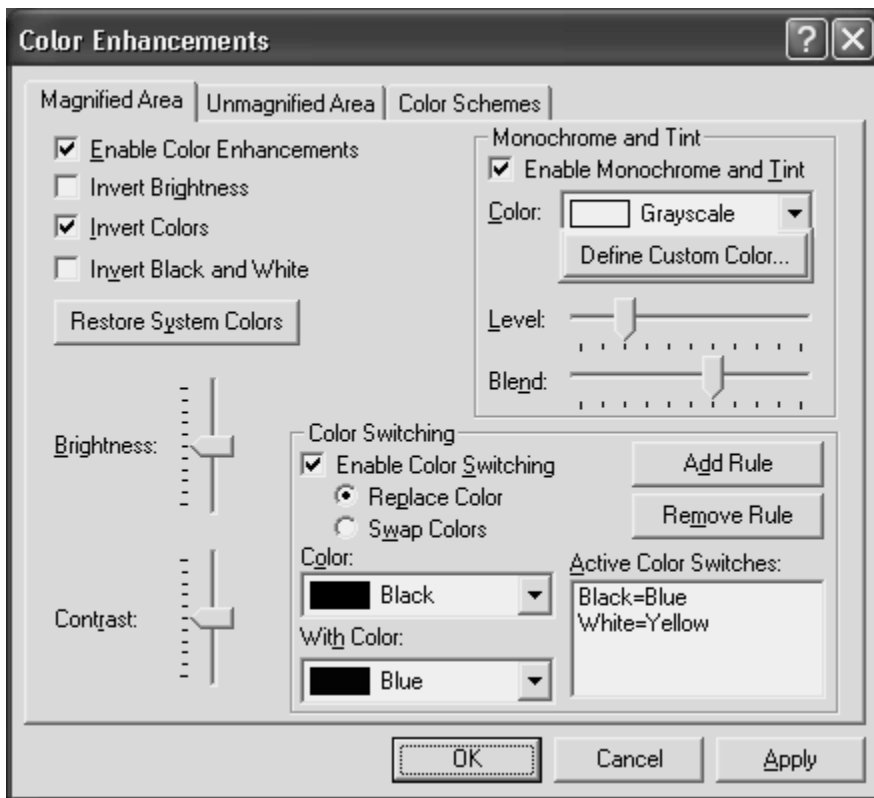
Color Enhancements

From the **Magnification** menu, choose **Color Enhancements** to define how MAGic displays colors on your screen. This feature allows you to replace and swap colors, adjust the brightness and contrast, apply tinting, make your screen black-and-white (monochrome), and invert the brightness and colors of your display. You can apply color enhancements to the magnified area, unmagnified area, or both. The **Magnified Area** and **Unmagnified Area** tabs provide the same enhancement options.

Note: If you are using Windows 95, 98, or ME, you can only use the **Color Enhancements** command to invert the colors of your screen.

The **Color Schemes** tab lets you save your color enhancements settings as a scheme or switch to a different scheme. For more information on schemes, refer to *Using Schemes* on page 47.

Select the **Enable Color Enhancements** check box on any tab in this dialog box to apply color enhancements to your display. Clear this check box to disable the color enhancements. You can also use the **Color Enhancements** button to enable or disable color enhancements.



Invert Brightness

Select this check box if you want **MAGic** to invert the brightness of colors on your display. Dark colors will appear lighter, while light colors will appear darker. For example, if you select this check box, black text becomes white text and dark blue becomes light blue.

Invert Colors

Select this check box to reverse the colors that are displayed on your screen.

Invert Black and White

If you select this check box, **MAGic** replaces the color black with white and the color white with black.

Restore System Colors Button

Click **Restore System Colors** or press **ALT+Y** to revert to your default Windows color settings.

Brightness

Use the **Brightness** slider to adjust the brightness of your screen. Brightness determines how light or dark colors appear. Move the slider down to reduce the brightness, move it up to increase the brightness.

Contrast

Use the **Contrast** slider to adjust the contrast of you screen. Contrast determines the difference between lighter and darker areas. Move the slider down to reduce the contrast, move it up to increase the contrast.

Monochrome and Tint

The **Monochrome and Tint** area allows you to tint your screen with a color or make the screen monochrome (black-and-white). **MAGic** only applies these settings if you select the **Enable Monochrome and Tint** check box.

Color

In the **Color** list, choose the color you want **MAGic** to use to tint your screen. Choose **Grayscale** if you want your screen to appear monochrome (black-and-white). To choose from additional colors, activate the **Define Custom Color** button and choose one of the available colors from the palette.

Level

Use the **Level** slider to adjust the luminescence, or brightness, of the tinting. Move the slider to the left to make the color appear darker, move it to the right to make the color appear brighter.

Blend

Use the **Blend** slider to control the intensity of the tinting. Move the slider to the left for strong tinting. At stronger levels, the tinting affects the color of almost everything on the screen. Move the slider to the right for a lower level of tinting. At the lowest levels, the tinting only slightly alters the colors on your screen.

Color Switching

The **Color Switching** area allows you to define rules that switch certain colors on your screen with colors of your choice. **MAGic** only applies these color switching rules if you select the **Enable Color Switching** check box.

To create a new rule:

1. Select the **Replace Color** radio button if you want to use one color instead of another. Select the **Swap Colors** radio if you want to switch two colors on your screen. For example, if you select **Replace Color** and choose to replace red with blue, all red objects will appear blue instead. If you select **Swap Colors** and choose to swap red and blue, all red objects appear blue, and all blue objects appear red.
2. Select one color in the **Color** list and a second color in the **With Color** list. If you are creating a color replacement rule, **MAGic** will replace the first color with the second color. If you are creating a color swapping rule, **MAGic** will switch these two colors on your screen.
3. Click **Add Rule** or press **ALT+D** to define your new rule and add it to the list.

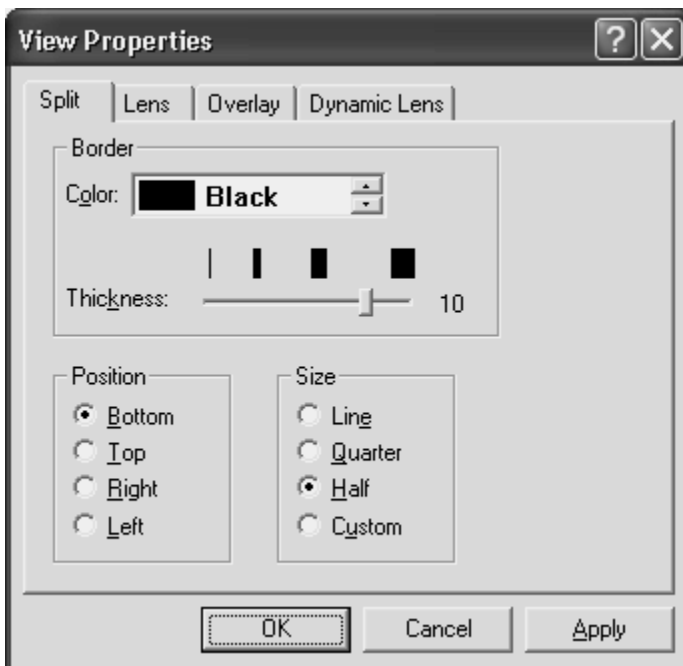
Follow the steps above to add more rules as necessary. To delete a rule, select it in the **Active Color Switches** list and click **Remove Rule** or press **ALT+M**.

View Properties

From the **Magnification** menu, choose **View Properties** to customize how the Split, Lens, Overlay, or Dynamic Lens views appear on your screen.

Split View

The **Split** tab allows you to define properties for the Split view. Split view allows you to see both an unmagnified area and a magnified area at the same time. The Split view opens a magnified window in part of your screen, but leaves the other part unmagnified as a reference.



Color

Select a color for the border that separates the two parts of the split screen.

Thickness

Move the slider bar to increase or decrease the thickness of the divider that separates the two parts of the split screen. The bars above the slider indicate the widths you can select.

Position

Select where you want the magnified area to appear on the screen.

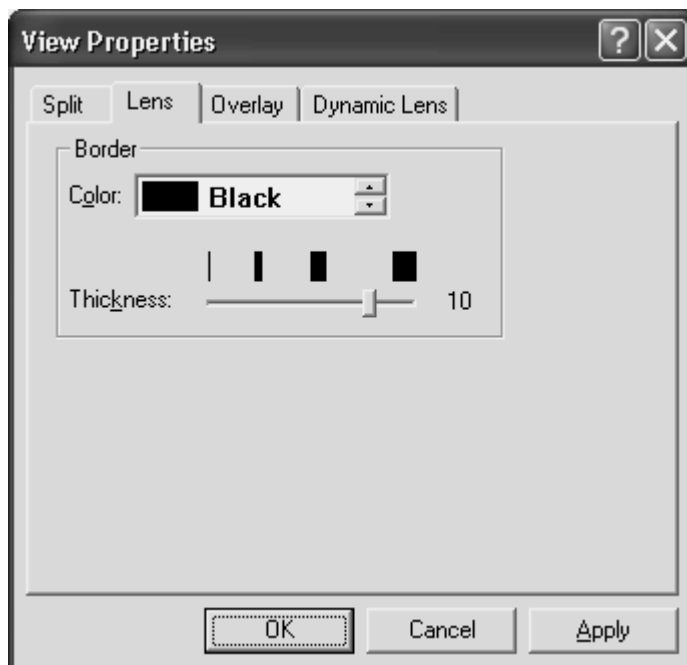
Size

Select how much of the screen you want the magnified area occupy. For example, if you select **Quarter**, the magnified area occupies 25% of the available screen area.

If you select **Line**, the magnified area of the screen occupies a size equal to one line of text, as specified in the **Point Size** box of the **Panning** dialog box. By default, **Custom** size is equivalent to one-third of the screen, but you can change this by using the **Resize View** button.

Lens

The **Lens** tab allows you to define properties for the Lens view. Lens view opens a small rectangular window, which is magnified, while leaving the remaining desktop unmagnified. The lens moves around the screen as you move your mouse or when the focus changes.



Color

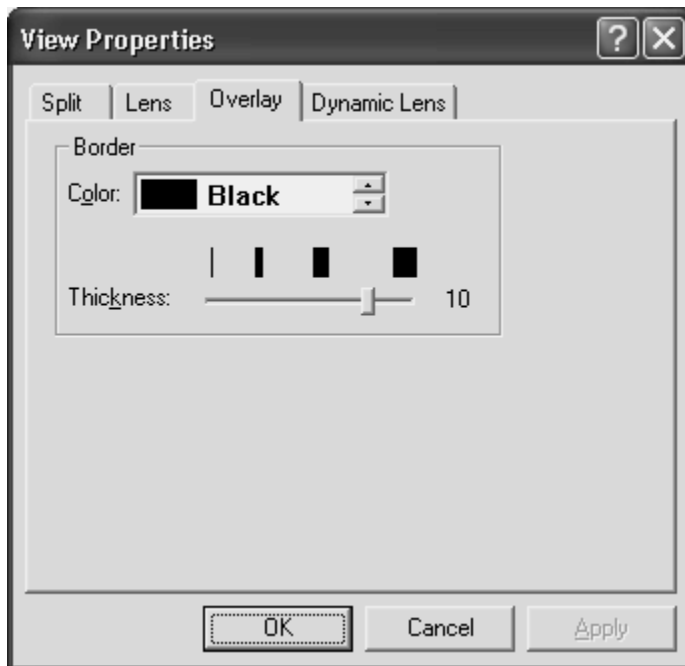
Select a color for the border of your lens.

Thickness

Move the slider bar to increase or decrease the thickness of the lens border. The bars above the slider indicate the widths you can select.

Overlay

The **Overlay** tab allows you to define properties for the Overlay view. Overlay view creates a magnified window in the corner of the screen, while the rest of the screen remains unmagnified. This is similar to the Lens view, but the Overlay view does not move around the screen.



Color

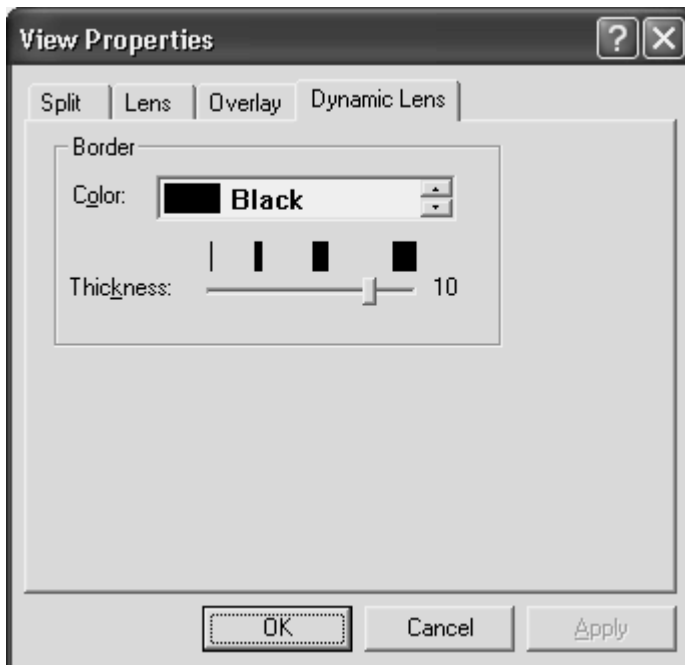
Select a color for the border of your overlay.

Thickness

Move the slider bar to increase or decrease the thickness of the border. The bars above the slider indicate the widths you can select.

Dynamic Lens

The **Dynamic Lens** tab allows you to define properties for the Dynamic Lens view. Dynamic Lens view opens a small rectangular window, which is magnified, while leaving the rest of the screen unmagnified. This window follows the mouse pointer or your current location within a document or dialog box if you are using the keyboard. In addition, when you move to a dialog box option or menu command, **MAGic** automatically resizes the lens so that it only magnifies the currently selected item. If you type in an edit box or document window, the lens expands to the width of the entire screen so you can see as much of the text as possible.



Color

Select a color for the border of your lens.

Thickness

Move the slider bar to increase or decrease the thickness of the lens border. The bars above the slider indicate the widths you can select.

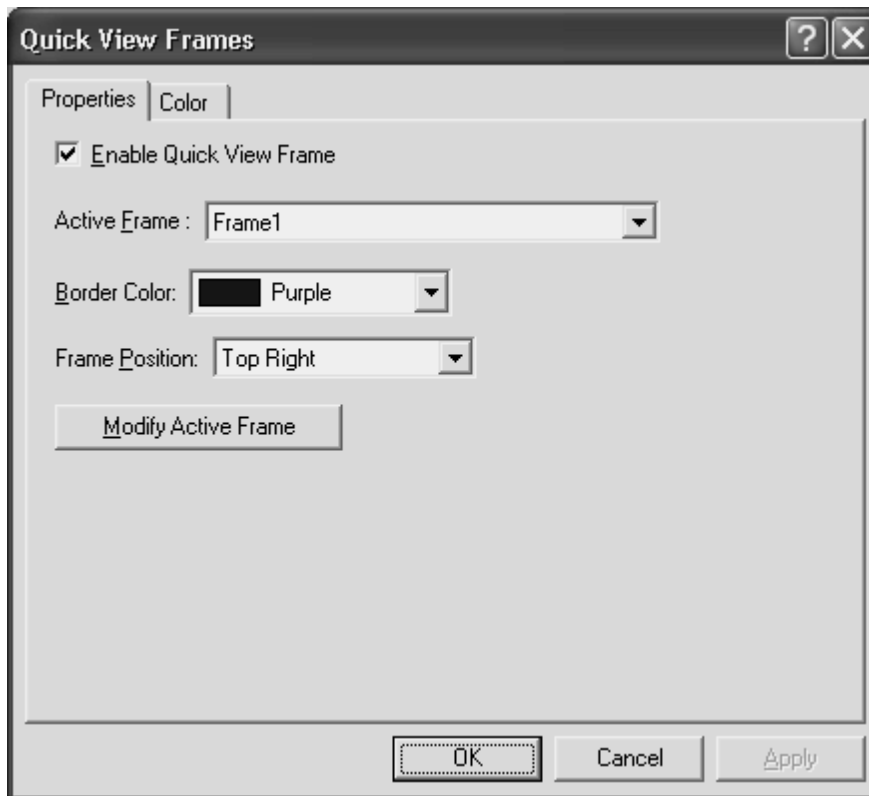
Quick View Frame

The Quick View Frame feature allows you to specify regions of the screen (called *frames*) that you can monitor while you work in other areas. MAGic can display one of these frames in the magnified area so you can see any changes or updates to that part of the screen. To choose which frame you want to display, or to customize the frame's position, border color, and color enhancements, open the **Magnification** menu and choose **Quick View Frame**.

Note: The Quick View Frame is only visible while you are using the Full view and have magnification enabled. In addition, the Quick View Frame is not available in Windows 95, 98, or ME.

Properties

The **Properties** tab allows you to select or modify the active frame and change the frame's position and border color.



Enable Quick View Frame

Select the **Enable Quick View Frame** check box to display the active frame on your screen in the location specified in the **Frame Position** list. Clear this check box to hide the Quick View Frame.

Tip: You can also press **MAGic Key+Q** to turn the Quick View Frame on or off.

Active Frame

In the **Active Frame** list, choose the frame that you want **MAGic** to display. You can create and save any number of frames and then choose the frame the best suits your current needs. To create a frame, do the following:

1. Move the mouse pointer to the top left corner of the region you want to enclose within the frame and press **MAGIC Key+LEFT BRACKET**.
2. Move the mouse pointer to the bottom right corner of the region and press **MAGIC Key+RIGHT BRACKET**.

Tip: To quickly create a frame that is automatically sized to fit a dialog box option, move your pointer to the option and press **MAGIC Key+LEFT BRACKET** twice quickly.

3. Type a name for this frame, then click **OK** or press **ENTER**. This is the name that will appear in the **Active Frame** list.
4. Ensure that the frame is positioned over the area of the screen that you want to monitor. You can move the frame to another location by dragging the frame's title bar.
5. If you want to resize the frame, move your pointer over a corner or edge of the frame border. When the pointer changes to a double-headed arrow, drag the border in the desired direction.
6. When you have finished resizing and positioning the frame, click **Close** on the **Quick View Manager** toolbar (located in the top left corner of the screen) or press **ESC**. Choose **Yes** when **MAGic** asks if you want to save your changes.

Tip: You can press **MAGic Key+9** to open the Quick View Manager and view/modify any frames you have saved.

Border Color

Choose a color for the border of the active frame from the **Border Color** list.

Frame Position

Use the **Frame Position** list to determine where you want the active frame to appear on your screen.

Modify Active Frame Button

Click **Modify Active Frame** or press **ALT+M** to resize or move the frame you selected in the **Active Frame** list. Drag the frame's title bar to move it to another part of the screen. To resize the frame, move your pointer over a corner or edge of the frame border. When the pointer changes to a double-headed arrow, drag the border in the desired direction.

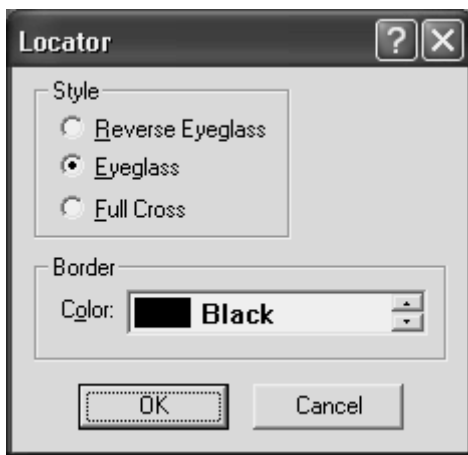
Color

The **Color** tab lets you apply color enhancements to the active frame. You can adjust the brightness and contrast, create color switching rules, apply tinting, and more. The options available on this tab are identical to those in the **Color Enhancements** dialog box. For more information on these options, refer to *Color Enhancements* on page 53.

Locator

From the **Magnification** menu, choose **Locator** to select a style and border color for the Locator. To enable or disable the Locator, use the **Locator** button on the **MAGic** user-interface.

When you activate the Locator, the full screen is temporarily presented unmagnified. Move the Locator around using the mouse or the arrow keys, and use the Locator to find something on your screen. Use **PAGE UP** to move to the top of the screen, **PAGE DOWN** to go to the bottom, **HOME** to go to the beginning of a line, and **END** to go to the end of a line. After you have located the item, press **ENTER** or the left mouse button to move the magnified area to that portion of the screen. Alternatively, you can press **ESC** to exit the Locator without moving the magnified area.



Style

Choose from three different styles for your locator:

- **Reverse Eyeglass** – Shows a square on the screen that is magnified while the rest of the screen is normal size. Colors within the magnified square are reversed.
- **Eyeglass** – Shows a square on the screen that is magnified while the rest of the screen is normal size.

- **Full Cross** – Shows a portion of the screen in reversed colors. In 3× magnification or higher, the Locator appears with crosshairs running through the center of the block. With magnification set to 2×, the Locator appears as a block of inversed colors.

Color

Specify what color border you want to appear around your Locator. The customizable border only applies to the Eyeglass and the Reverse Eyeglass options.

Panning

Panning moves your display either horizontally or vertically, so you can browse the screen, locate objects, and read magnified text easier. With magnification set at 2× or higher, you can pan automatically or incrementally. The advantage of automatic panning is that you can review the contents of the screen without using repetitive mouse movements. While incremental panning is similar to automatic panning, it is different in that your viewing area moves in small, fixed increments making it easier for you to explore your focal area.

Automatic Panning

Begin automatic panning in any direction by pressing the **MAGic Key** in conjunction with any arrow key. Panning then begins in that direction, and continues until you stop it, or until it reaches the edge of the screen.

Note: If you disable Line Wrap in the **Panning** dialog box, then panning will stop at the right edge of the screen when panning from left to right.

Stop Panning

To stop panning, press the **MAGic Key** or the **ESC** key. You can also use the arrow key that corresponds with the direction in which you are currently panning.

Change Panning Direction

Press the arrow key of the direction in which you want to pan.

Panning Quick Advance

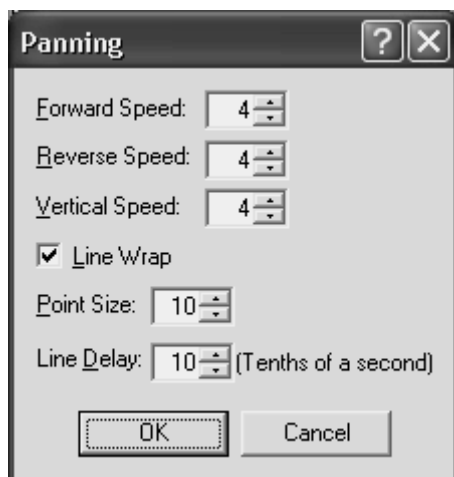
Pressing **ENTER** while panning right scrolls the view to the beginning of the next line, pauses, and then continues panning to the right.

Panning Speed

Adjust panning speed during panning, or through the **Panning** dialog box. While panning, press **NUM PAD PLUS** to speed up, and **NUM PAD MINUS** to slow down. The speed adjustment only applies to the current direction of Panning.

Panning Dialog Box

From the **Magnification** menu, choose **Panning** to specify panning properties.



Speed

Panning speed is set independently for each panning direction: forward, reverse, or vertically. Panning speed values are between 1 and 50. You might want to select different speeds for different directions. As you read, you are panning forward, which might require a higher panning speed, than reverse. As you move in the reverse direction you are probably looking for something, so you would want to go slower. You may also want to set vertical panning a bit faster, because you will use vertical panning for skimming documents or Web sites.

Line Wrap

Select **Line Wrap** if you want **MAGic** to automatically wrap to the next line when you reach the right edge of the screen while panning. The edit spin boxes, below the **Line Wrap** check box, allow you to control the Line Wrap settings.

Point Size

You can adjust the vertical distance that **MAGic** travels between successive lines with the line wraps. Point size should correspond to your font size. The default setting is 10 points.

<p>Note: The point size specified here also controls the size of the Split View when set to Line.</p>
--

Line Delay

Line Delay controls the length of the delay while panning between lines. The Line Delay settings are in tenths of a second. The default setting is 10 (or one second).

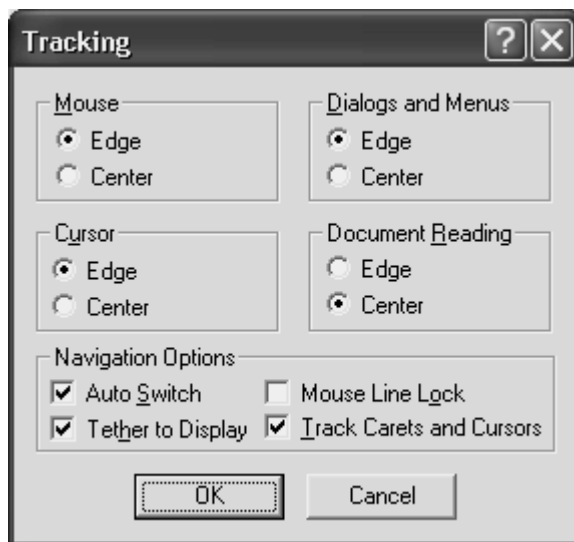
Incremental Panning

Before you can use the Incremental Panning feature you must assign hot keys for each incremental direction. To do this, go to the **Keyboard** menu and select **Keyboard Assignments**. From the **Category** list, select **Navigation**. Next, select the incremental direction you want to assign a hot key to and then choose the **Assign Hot Key** button. Within the **Assign Hot Key** dialog box type the keystroke you want to use, and then press **ENTER**.

When you are done assigning hot keys, choose the **OK** button to exit the **Keyboard Assignments** dialog box.

Tracking

Tracking allows **MAGic** to follow your activity on the screen. For example, **MAGic** can track your mouse pointer so that it always remains in the center of the magnified area. To change how **MAGic** tracks the cursor and mouse pointer, as well as menus, dialog boxes, and highlighted text, open the **Magnification** menu and choose **Tracking**.



Mouse

To control how **MAGic** tracks your mouse pointer, select one of the following radio buttons:

- **Edge** – If you select this option, **MAGic** follows your mouse pointer only when it reaches the edge of the magnified area.

- **Centered** – If you select this option, MAGic continuously follows your mouse pointer, ensuring that it is always in the center of the magnified area.

Cursor

To control how MAGic tracks the cursor when you are typing text, select one of the following radio buttons:

- **Edge** – If you select this option, MAGic follows your cursor only when it reaches the edge of the magnified area.
- **Centered** – If you select this option, MAGic continuously follows your cursor, ensuring that it is always in the center of the magnified area.

Dialogs and Menus

The **Dialogs and Menus** area lets you control how MAGic follows your movement through dialog boxes and menus. Select one of the following radio buttons:

- **Edge** – MAGic automatically moves the magnified area when you reach the edge of the screen while moving through dialog boxes and menus.
- **Centered** – MAGic continuously tracks the active dialog box option or menu command, ensuring that it is always in the center of the magnified area.

Document Reading

To control how MAGic tracks highlighted text during document reading, select one of the following radio buttons:

- **Edge** – MAGic automatically moves the magnified area when the highlight reaches the edge of the screen.
- **Centered** – MAGic continuously tracks the highlight, ensuring that highlighted text always remains in the center of the magnified area.

Auto Switch

If you select this check box, centered and relative mouse tracking is temporarily stopped after you stop moving the mouse. The screen remains stationary as long as you keep the mouse pointer within the boundary of the screen. When you move beyond the edge of the screen, tracking starts again.

Tether to Display

If you select this check box, the mouse pointer is "tethered," or attached, to the magnified display. As soon as you move the mouse, the mouse pointer automatically appears at the current magnified location, even if it was not visible on the screen. If you do not select this check box, MAGic moves to the current location of the mouse pointer when you move the mouse.

Mouse Line Lock

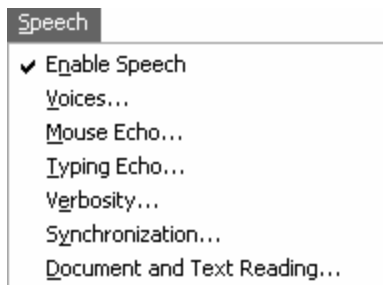
If you select this check box, you can only move the mouse pointer in horizontal and vertical directions. If you move the mouse in a diagonal direction, MAGic moves the mouse pointer in the closest direction.

Track Carets and Cursors

Select this check box if you want MAGic to track your cursor and mouse pointer.

MAGic Speaks

Not only does MAGic magnify your computer's screen, but it also has screen reading capabilities. You can customize MAGic's speech components to fit your needs. The **Speech** menu, located on the menu bar contains all the controls to help you adapt MAGic's speech to suit you.



The first item on the **Speech** menu, **Enable Speech**, lets you activate or deactivate speech. If the menu item appears with a checkmark next to it, speech is enabled. If there is no checkmark, speech is disabled.

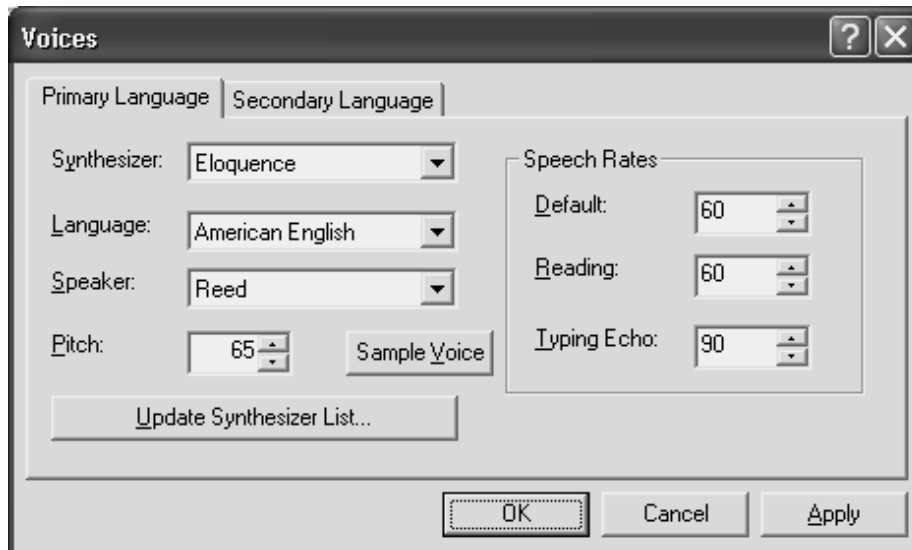
The Speech Menu

Voices

From the **Speech** menu, choose **Voices** to set the basic components of how you hear MAGic. The **Primary** and **Secondary Language** tabs of the **Voices** dialog box contain the same controls.

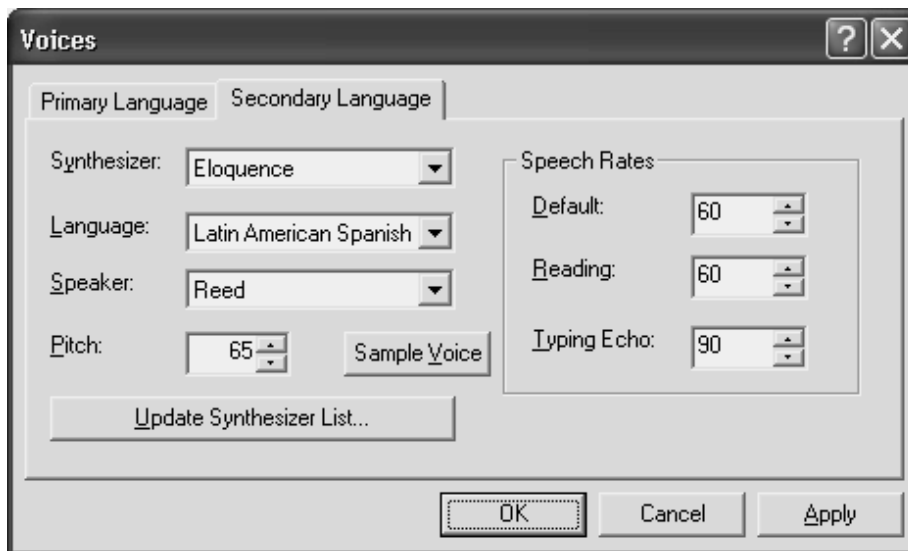
Primary Language

From the **Primary Language** tab of the **Voices** dialog box, you set your preferences for the language in which you want to hear MAGic. Choose from any of the languages available and proceed to set the specifications on this tab to fit your language choice.



Secondary Language

The secondary language is another language in which MAGic can speak. Press **MAGic Key+F11** to switch to your secondary language. If you often use two languages, set your other language in the **Secondary Language** tab of the **Voices** dialog box. There you can also set your preferences for the voice of that other language.



Synthesizer

By default MAGic uses Eloquence as its speech synthesizer, although if you have other Speech Application Interface (SAPI) synthesizers installed on your computer, you can use one of those synthesizers instead. When you first visit the **Voices** dialog box, the synthesizer list will only include Eloquence. Click the **Update Synthesizer List** button (or press **ALT+U**) to find the other compatible synthesizers installed on your system. While MAGic searches for other synthesizers you will see a message box indicating that it is looking for them.

After MAGic locates all compatible synthesizers, you will see the **Update Synthesizer List** dialog box. On the left side of the dialog box, there is a list of the available SAPI Synthesizers. Along the middle of the dialog box, there is a series of buttons that will allow you to add or remove synthesizers.



To add a new synthesizer:

1. Select one or more synthesizers from the **Available SAPI Synthesizer** list.
2. Choose the **Add** button to add just the selected synthesizers to the **Synthesizer List for MAGic**, or choose **Add All** to move all synthesizers to the **Synthesizer List for MAGic**.

To remove a synthesizer from the **Synthesizer List for MAGic**:

1. Select one or more synthesizers from the **Synthesizer List for MAGic**.
2. Choose the **Remove** button to remove only the selected synthesizers, or choose **Remove All** to remove all the synthesizers from the **Synthesizer List for MAGic**.

Note: Although Eloquence does not appear in the **Update Synthesizer** list dialog box, it always appears in your synthesizer list in the **Voices** dialog box. Eloquence is always available for your use.

Choose **OK** to accept these changes and move back to the **Voices** dialog box. Your updated synthesizer list will apply to both the **Primary** or **Secondary Language** tabs. From within the **Voices** dialog box, move to the either the **Primary** or **Secondary Language** tab and select your desired synthesizer from the **Synthesizer** list. This changes the synthesizer only for the active language tab.

Language

When MAGic is initially installed, on the **Primary Language** tab, the language is set to the language in which your MAGic menus appear. On the **Secondary Language** tab, the language is set to **None**, until you change it.

Speaker

Next is your choice of speaker, which provides different voices, used for MAGic.

Pitch

Use this spin box to control the tone of the voice you select.

Sample Voice

Use this button to hear a preview of the voice and language settings you have specified.

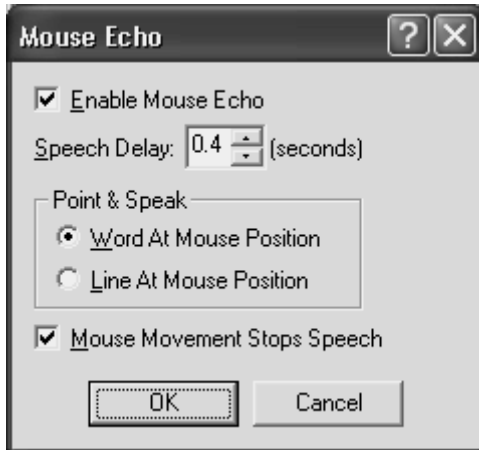
Speech Rates

As you use MAGic, you may want to hear different types of activities at different rates. For instance, while you are typing, you may want MAGic to read more quickly, so that you can ensure the accuracy of your typing. On the other hand, if you are reading a document, you might want MAGic to speak more slowly, so you can concentrate on content.

- **Default** - This is the speed at which MAGic will read most of the items that appear on your screen, including dialog boxes and menus.
- **Reading** – This is the speech rate MAGic uses for reading documents, e-mail messages, or Web sites.
- **Typing Echo** - MAGic repeats what you type. Use this spin box to specify how fast you want MAGic to echo your keystrokes back to you.

Mouse Echo

If mouse echo is enabled, MAGic reads text that you point to with the mouse. To customize this feature, open the **Speech** menu and choose **Mouse Echo**.



Enable Mouse Echo

Use this check box to turn mouse echo on or off.

Note: MAGic still speaks ToolTips if mouse echo is off. If you do not want MAGic to speak ToolTips, open the **Speech** menu and choose **Verbosity**. Then clear the **Tool Tips** check box.

Speech Delay

Specify the length of time you want MAGic to wait before it reads the word or line at the current location of the mouse pointer. The delay is measured in seconds. If you move the mouse pointer away before the delay has elapsed, MAGic does not read the word or line.

Point & Speak

In this area, select one of the following options:

- **Word at Mouse Position** - MAGic reads the word at the current location of the mouse pointer. You must point at the word for the length of time specified in the **Mouse Speech Delay** box before MAGic reads the word.

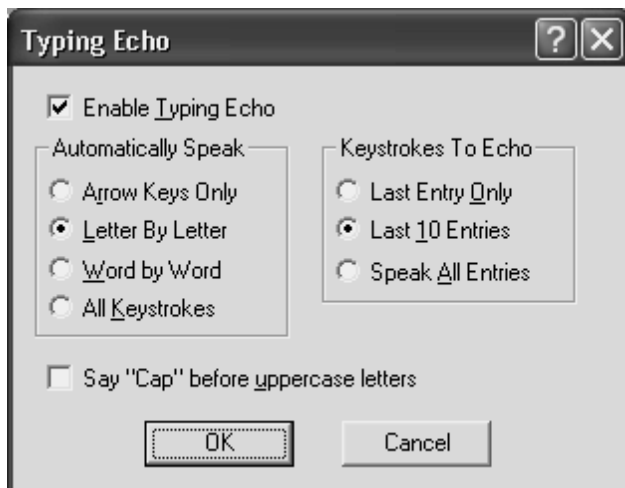
- **Line at Mouse Position** - MAGic reads the line of text at the current location of the mouse pointer. You must point at the line for the length of time specified in the **Mouse Speech Delay** box before MAGic reads the line.

Mouse Movement Stops Speech

Select this check box to allow MAGic to interrupt speech when you move the mouse pointer over text. If you clear this check box, you can move the mouse pointer anywhere on the screen without interrupting speech. This option does not interrupt speech generated by mouse echo.

Typing Echo

As you type, MAGic announces what you have typed. To customize this feature, open the **Speech** menu and choose **Typing Echo**.



Enable Typing Echo

Check this box to turn typing echo on or off.

Automatically Speak

MAGic presents four choices for what is automatically spoken.

- **Arrow Keys Only** – Speaks the letter to the right of the cursor as you press the arrow keys to move through the text. If you press the up or down arrow keys, MAGic will speak the line. Pressing **CTRL+RIGHT** or **LEFT ARROW** causes MAGic to read the word.

- **Letter by Letter** – Announces all alphanumeric characters and punctuation as they are typed, during word processing, editing, or data entry.
- **Word by Word** – Speaks each word that you type after you press the **SPACEBAR**.
- **All Keystrokes** – Announces every key that you press.

Note: When you are using Java-based programs, **MAGic** announces each key that you press regardless of which option you select.

Keystrokes to Echo

As you type **MAGic** speaks, but if your typing speed is faster than the time it takes for the speech to respond to the keyboard your speech will lag behind typing. If so, adjust the **Keystrokes to Echo**.

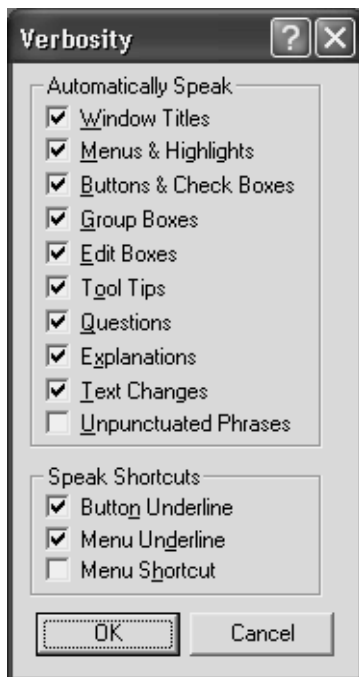
- **Last Entry Only** – If speech output lags behind typing, then **MAGic** speaks only the most recent entry, and discards the backlog.
- **Last 10 Entries** – **MAGic** speaks the last ten entries and discards the backlog when speech output lags behind typing.
- **Speak All Entries** – Even if a backlog occurs, **MAGic** speaks all entries.

Say “Cap” Before Uppercase Letters

If you select this check box, **MAGic** says, “Cap,” before reading capital letters that you have typed or moved to with the arrow keys. You can enable or disable this option at any time by pressing **MAGic Key+F2**.

Verbosity

From the **Speech** menu, choose **Verbosity** to control the event driven functions that **MAGic** speaks. Select the check boxes of the items that you want to hear.



Automatically Speak

Automatically Speak contains a group of check boxes for items that you can choose to hear or not.

With these check boxes selected, the following is what you will hear:

- **Window Titles** – MAGic speaks the text that appears on the title bar of the window as the window becomes active.
- **Menus & Highlights** – As you navigate the menu items, MAGic speaks the highlighted menu items.
- **Buttons & Check Boxes** – MAGic speaks buttons and check boxes as you select them.
- **Group Boxes** – Group boxes are collections of related check boxes or radio buttons often boxed together in a group with a common category or group heading. For example, in the **Verbosity** dialog box, the group boxes are **Automatically Speak** and **Speak Shortcuts**. When checked, MAGic speaks the group box heading the first time you select a button in the group.

- **Edit Boxes** – An edit box is a field into which you type information. A list may appear beneath the field, from which you can make a selection, making this type of edit box a combo box. MAGic speaks edit boxes and combo boxes when they gain focus.
- **Tool Tips** – ToolTips frequently appear when you rest the mouse over an item for a brief period of time. The ToolTip gives you a brief description of the item. MAGic speaks ToolTips of any length.
- **Questions** – MAGic reads questions that may appear when dialog boxes are displayed. For example, “Are you sure you want to quit?”
- **Explanations** – MAGic reads explanatory text that may appear when dialog boxes are displayed. For example, “Type the name of the program, folder, or document and Windows will open it for you.”
- **Text Changes** – MAGic speaks dialog box text updates that may reflect status changes. Such updates may include the number of installation minutes remaining, or changes to display resolution.
- **Unpunctuated Phrases** - MAGic reads text that appears in dialog boxes that does not contain punctuation.

Speak Shortcuts

Within menus and buttons, often a letter is underlined. You can press the underlined letter (also called an access key) in conjunction with the **ALT** key to activate the command or button.

Menu selections may also list a keyboard combination that you can use to activate that choice without the use of the mouse or the menus. For example, on the **File** menu, to the right of **Save Settings**, you’ll notice **CTRL+S**. You can press **CTRL+S** to carry out the **Save Settings** command without opening the menus.

You can choose how MAGic reads underlined letters and shortcuts by selecting or clearing the following check boxes:

- **Button Underline** – MAGic reads the underlined letter for buttons.
- **Menu Underline** – MAGic reads the underlined letter for menus and menu commands.

- **Menu Shortcut** – If a menu command has a shortcut key, MAGic reads the shortcut.

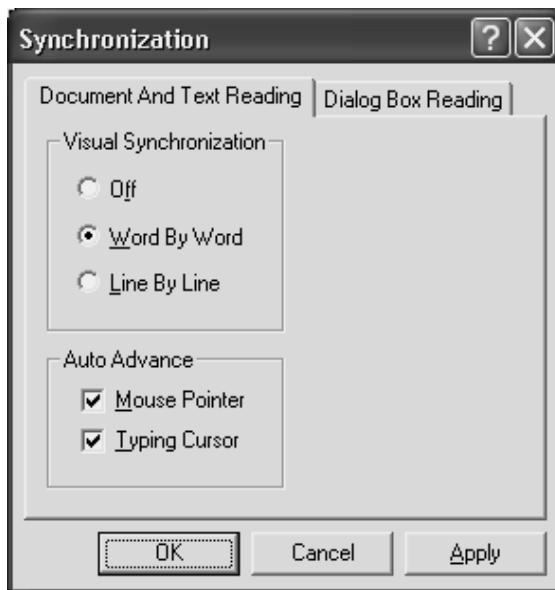
Note: MAGic reads underlined letters before the button or menu or command name.

Synchronization

From the **Speech** menu, choose **Synchronization** to change how speech and large print are synchronized on the display. You can set synchronization differently for document and text reading and for dialog box reading.

Document and Text Reading

The **Document and Text Reading** tab allows you to choose how MAGic synchronizes speech and large print when reading documents and text.



Visual Synchronization

Select one of the following visual synchronization options:

- **Off** - Speech is not synchronized with the text that appears on your screen.
- **Word by Word** – MAGic shows the words on the screen as they are spoken.

- **Line by Line** – MAGic shows the lines on the screen as they are spoken. When synchronization is set to Line by Line, MAGic moves down each line, but it does not move left to right to show all words on the line.

Tip: To change how MAGic highlights text as it reads, open the **Speech** menu and choose **Document and Text Reading**.

Auto Advance

The following options automatically advance the mouse and typing cursor in synchronization with reading:

- **Mouse Pointer** – If you select this check box, MAGic automatically advances the mouse pointer while reading. When reading stops, or you decide to pause, the mouse points to the last item that MAGic read.
- **Typing Cursor** – If you select this check box, MAGic automatically advances the insertion point while reading. When reading stops, or you decide to pause, the insertion point is positioned over the last item that MAGic read. This feature is only active when reading documents and windows that you can edit.

Dialog Box Reading

The **Dialog Box Reading** tab allows you to choose how MAGic synchronizes speech and large print when reading dialog boxes.



Visual Synchronization

Select one of the following visual synchronization options:

- **Off** - Speech is not synchronized with the text that appears on your screen.
- **Word by Word** – MAGic shows the words on the screen as they are spoken.
- **Line by Line** – MAGic shows the lines on the screen as they are spoken. When synchronization is set to Line by Line, MAGic moves down each line, but it does not move left to right to show all words on the line.

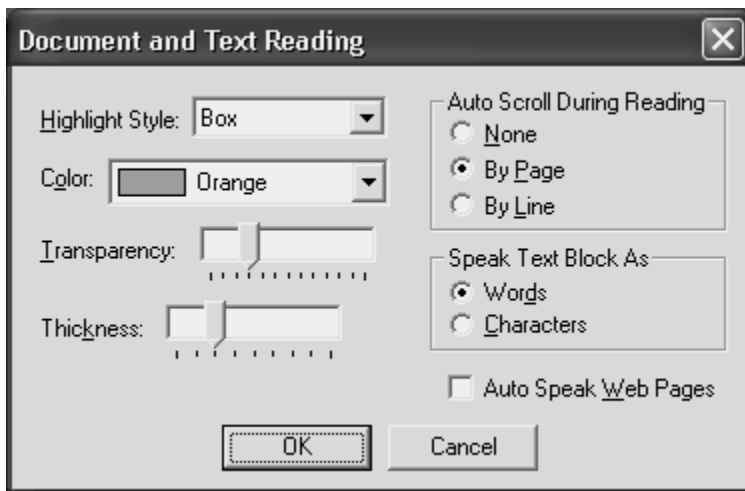
Inverted Highlight On

Select this check box to show the text as white, and the highlight as a black square around it when text is read.

Document and Text Reading

From the **Speech** menu, choose **Document and Text Reading** to customize how MAGic reads, highlights text, and scrolls the page.

Note: You cannot use the box highlight style or adjust the transparency, thickness, or color of the highlighting if you are using Windows 95, 98, or ME.



Highlight Style

When MAGic uses synthesized speech to read the text on your screen, it can highlight the text it is speaking. This allows you to easily follow the text visually while MAGic reads. In the **Highlight Style** list, choose one of the following options to specify how you want MAGic to highlight text:

- **None** – MAGic does not highlight text as it reads.
- **Box** – Surrounds the text MAGic reads with an empty, rectangular outline.
- **Block** – Highlights the text MAGic reads with a solid rectangle.
- **Underline** – Underlines the text that MAGic reads.

Color

In the **Color** list, choose a color for the highlight style you selected. If you want to invert the colors in the area covered by the highlight, choose **Invert Colors**.

Transparency

Use the **Transparency** slider to adjust the transparency level of the selected highlight style. A higher level of transparency allows you to see more of the surrounding area covered by the highlighting.

Thickness

Use the **Thickness** slider to adjust the thickness of the highlight style you selected. This lets you change the vertical size of the underline and block highlight styles, and determine the thickness of the border for the box highlight style.

Auto Scroll During Reading

The **Auto Scroll During Reading** area lets you customize how speech advances when the bottom of a window is reached.

- **None** – Reading stops at the bottom of the window regardless of the size of the document. The document does not scroll automatically; you must move to the next screen manually and make **MAGic** begin speaking again.
- **By Page** – Reading continues beyond the window limit by automatically feeding the next page of the document.
- **By Line** – Reading continues beyond the window limit by automatically feeding the document one line at a time.

Speak Text Block As

Use the **Speak Text Block As** area to determine whether you want **MAGic** to read by word or character.

- **Words** – **MAGic** reads each word in the text block.
- **Characters** – **MAGic** reads each character in text block, allowing you to hear how the words are spelled.

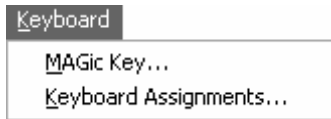
Auto Speak Web Pages

Select the **Auto Speak Web Pages** check box if you want **MAGic** to automatically begin reading when you view Web pages or other HTML documents.

Chapter 6

Keyboard

The **Keyboard** menu allows you to customize how you use your computer's keyboard with **MAGic**.



MAGic Key

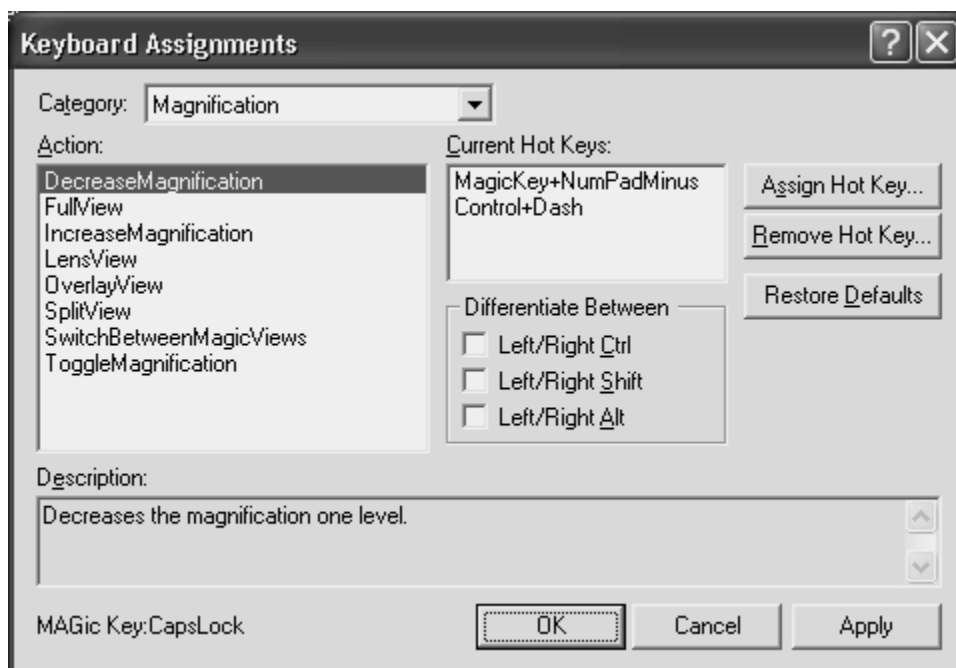
Pressing the **MAGic Key** in combination with other keys activates a **MAGic** command if one is assigned, otherwise it will pass the key combination through to the application. Pressing the **MAGic Key** by itself and releasing it will not carry out any action.

The default **MAGic Key** is **CAPS LOCK**. From the **Keyboard** menu, choose **MAGic Key** to assign the **MAGic Key** to any of the following keys: extended **INSERT** (found on the six pack), **NUM PAD INSERT**, either **INSERT**, or **SCROLL LOCK** (the key just above **HOME** on the six pack).



Keyboard Assignments

From the **Keyboard** menu on the MAGic user interface, select **Keyboard Assignments** to learn more about the hot keys in MAGic. You can view the current hot keys assigned to actions, assign different hot keys, remove hot keys, or restore the hot keys to the default settings from within the **Keyboard Assignments** dialog box.



In the **Category** list, select what kind of hot keys you want to view. By choosing one of these categories, the items in the **Action** list will change to show only items that fit the category, making the list more manageable.

Note: Selecting a specific application category shows hot keys for special MAGic functions in that application. Selecting **All Default** will not show application hot keys.

Move to the **Action** list and select the action that you want to view. The hot key appears in the **Current Hot Keys** list, located to the right. If no hot key appears in the **Current Hot Keys** list, no hot key is assigned.

Customizing Hot Keys

To add a hot key, select an action in the **Action** list and click **Assign Hot Key** or press **ALT+S**. Press the combination of keys that you want to assign to the selected action. The key combination appears in the **Assign To** edit box.

When you assign hot keys to actions, it doesn't matter whether you press the right or left **ALT**, **CTRL**, or **SHIFT** key. However, you may want to use only the left or right key so that additional key combinations remain available. To specify the left or right **ALT**, **CTRL**, or **SHIFT** keys for a hot key, select the appropriate check box(es) in the **Differentiate Between** area before you activate the **Assign Hot Key** button. For example, if you want to create a hot key that uses only the left **ALT** key, select the **Left/Right Alt** check box.

Note: The hot keys that you assign while these check boxes are selected will always require you to press the correct left or right key. If you later clear the check box, previously created hot keys still require you to use the correct left or right key.

To remove a hot key, select it in the **Current Hot Keys** list and click **Remove Hot Key** or press **ALT+R**. **MAGic** then asks you to confirm that you want to delete the hot key.

You can click **Restore Defaults** or press **ALT+D** to return all hot key assignments to their original key combinations.

Chapter 7

Application Specific Functions

MAGic contains application specific functions to help you work in popular software applications. With MAGic's application specific functions, you will find that using these functions consolidates screen information, enhances application navigation, and eliminates visual clutter.

For example, with MAGic running in Microsoft® Excel you can bring up a dialog box that will list the cells for a particular row that contain data. This consolidates screen information, because it presents the header, if one exists, and only those cells containing data. You can then move directly to a particular cell, without pressing the arrow keys to move through multiple empty cells, which enhances application navigation. When using MAGic with Microsoft® Internet Explorer, you can eliminate visual clutter by reformatting the screen. After you reformat, MAGic presents only the necessary text, and hides graphics that may not be of interest to you. With only the text showing, you'll find it easier to read the less cluttered screen.

MAGic has included Application Specific Functions for Microsoft® Word, Microsoft® Excel, and Microsoft® Internet Explorer.

MAGic and Microsoft Word

MAGic has shortcut keys to help you use Microsoft Word 97, 2000, and 2002 without relying on the mouse to access certain features.

List Spelling Errors	CTRL+SHIFT+E
List Revisions	CTRL+SHIFT+V
List Grammatical Errors	CTRL+SHIFT+G
List Comments	CTRL+SHIFT+APOSTROPHE
Post Comment	ALT+SHIFT+APOSTROPHE

List Hyperlinks	MAGic KEY+F8
List Inline Objects	CTRL+SHIFT+O
Focus to First Form Field	MAGic KEY+CTRL+HOME
Select a Field	CTRL+SHIFT+L
Select a Table	MAGic KEY+CTRL+T
Post Footnote or Endnote	ALT+SHIFT+E

Listed below are detailed descriptions of the **MAGic** keystrokes you can use in Microsoft Word.

List Spelling Errors

Press **CTRL+SHIFT+E** to list all the words Microsoft Word marked as misspelled. From this dialog box, you can move to a selected misspelled word in the document.

List Revisions

Press **CTRL+SHIFT+V** to list all the revisions in Word's Track Changes feature. From this dialog box, you can move to a selected revision in the document.

List Grammatical Errors

Use **CTRL+SHIFT+G** to list all the phrases marked by Microsoft Word as grammatical errors. From this dialog box, you can move to a selected grammatical error in the document.

List Comments

Use **CTRL+SHIFT+APOSTROPHE** to list all the reviewer's comments throughout the document, and this dialog box allows you to move to the selected comment.

Post Comment

Press **ALT+SHIFT+ APOSTROPHE** to display a comment in a message box. To use this keystroke you must enable "Unpunctuated Phrases" in the **Verbosity** dialog box found under the **Speech** menu and place the insertion point at the very end of the comment marker in the document. Use this keystroke to avoid hovering over the comment marker in the document. If you hover over the comment marker in higher magnifications, scrolling the magnified comment text could be a problem.

List Hyperlinks

Press **MAGic Key+F8** to list the hyperlinks in the current document. From this dialog box, you can either move to the hyperlink in the document, or you can activate the hyperlink.

List Inline Objects

Press **CTRL+SHIFT+O** to list all the objects in the text layer of the document. It allows you to move to the location of the selected object in the document.

Focus to First Form Field

Press **MAGic Key+CTRL+HOME** to move to the first form field in a document.

Select a Field

Use **CTRL+SHIFT+L** to list all the fields in a document. From this dialog box, you can move to a selected field.

Select a Table

Press **MAGic Key+CTRL+T** to list all the tables in the document. You can move to a table from the dialog box that appears. If the document is protected to only allow edits in form fields, **MAGic** moves the insertion point to the first form field of the selected table.

Post Footnote or Endnote

Press **ALT+SHIFT+E** to display a footnote or endnote in a message box. The insertion point must be located on the footnote or endnote reference and you must enable "Unpunctuated Phrases" in the **Verbosity** dialog box found under **MAGic's Speech** menu.

MAGic and Microsoft Excel

MAGic has shortcut keys to help you use Microsoft Excel 97, 2000, or 2002 without relying on the mouse to access certain features.

Adjust MAGic Options	MAGic Key+O
List Cells with Comments	CTRL+SHIFT+APOSTROPHE
List Column	CTRL+SHIFT+C
Post Column Title	ALT+SHIFT+C
Post Column Total	MAGic KEY+ENTER
List Row	CTRL+SHIFT+R
Post Row Title	ALT+SHIFT+R
Post Row Total	MAGic KEY+R
List Visible Cells with Data	CTRL+SHIFT+D
Select Hyperlink	CTRL+SHIFT+H
Set Monitor Cells	ALT+CTRL+SHIFT+1 THROUGH 0
Move to Monitor Cell	CTRL+SHIFT+M
Post Monitor Cells	ALT+SHIFT+1 THROUGH 0

Listed below are detailed descriptions of the MAGic keystrokes you can use in Excel.

Adjust MAGic Options

Press **MAGic Key+O** to adjust options that allow for easier navigation in higher levels of magnification. MAGic presents the Adjust MAGic Options dialog box, which contains several options from which you can choose.

- *Single or multiple region support* – If you use more than one region in Excel, turn on multiple region support to hear when you enter different regions. For information regarding regions, please see the Excel Help file.
- *Set region column titles to row range* – MAGic defined the selected row range as the rows containing column titles so that when you press the keystroke to Post Column Title, MAGic reads the title for the current row.
- *Set region row titles to column range* – MAGic define the selected column range as the columns containing row titles so that when you press the keystroke to Post Row Title, MAGic reads the title for the current column.
- *Set region total column to current* – MAGic defines as the column in this region where row totals will be found. If you press post row total, instead of searching down the row to find the total, MAGic looks directly to this column.
- *Set region total row to current* – MAGic defines as the row in this region where column totals will be found. If you press post column total, instead of searching down the column to find the total, MAGic looks directly to this column.
- *Set next available monitor cell* – A monitor cell is a cell or range of cells you can observe while you work in other areas of the spreadsheet. You have ten monitor cells available, which are defined by pressing **ALT+CTRL+SHIFT+1** through **0** on the number row, and read by pressing **ALT+SHIFT+1** through **0**. Instead of using **ALT+CTRL+SHIFT+1** through **0**, you can press **MAGic Key+0** for Adjust MAGic Options, and press the **SPACEBAR** on this option, and MAGic determines the next undefined monitor cell for this sheet and defines it to point to the currently selected range of cells. MAGic then tells you which monitor cell it has assigned to the range. Then you press the appropriate keystroke to read this range from anywhere on this sheet. For example, if you hear, “assigning monitor cell 5 to B5, it means that you should press **ALT+SHIFT+5** to hear the cell contents. Monitor cells are defined on a sheet-by-sheet basis regardless of the multiple or single region support setting.

- *Clear worksheet's monitor cells* – Clears the monitor cells defined for the current sheet.
- *Clear region's title/total definitions* – Clears any definitions for the following: the row range used for this region's column titles, the column range used for this region's row titles, and the row and column used for column and row totals. It also turns off title reading and resets **MAGic** so if you press a total reading keystroke (Post Row/Column total), **MAGic** will search across the row or down the column in the current region for a total rather than using the defined total row or column.

List Cells with Comments

Use **CTRL+SHIFT+APOSTROPHE** to list all of the cells in the visible window that have an attached comment. This allows you to quickly locate any visible cells that may provide important information about the spreadsheet.

List Column

Use **CTRL+SHIFT+C** to list the cells in the current column that contain data. From this dialog box, you can move to a particular cell. If you defined column or row titles they will also be displayed.

Post Column Title

Use **ALT+SHIFT+C** to display the current column's title in a message box. Use this keystroke when you work in complex datasheets to find the column title without scrolling away from your current place. You must define the column's title before the keystroke will be effective. Do so from within the **Adjust MAGic Options** dialog box. You also must enable "Unpunctuated Phrases" in the **Verbosity** dialog box found under **MAGic's Speech** menu.

Post Column Total

Press **MAGic Key+ENTER** to display the current column's total in a message box. **Magic** will find either the predefined row containing column totals, set in the **Adjust MAGic Options** dialog box, or will search the current column for a cell that contains the word **SUM**. You also must enable "Unpunctuated Phrases" in the **Verbosity** dialog box found under **MAGic's Speech** menu.

List Row

Use **CTRL+SHIFT+R** to list the cells in the current row that contain data. This allows you to set focus on the selected cell. If you defined column or row titles they will also be displayed.

Post Row Title

Press **ALT+SHIFT+R** to display the current row's title in a message box. You must define the row's title first, using the **Adjust MAGIC Options** dialog box and you must enable "Unpunctuated Phrases" in the **Verbosity** dialog box found under the **Speech** menu.

Post Row Total

Use **MAGIC Key+DELETE** to display the current row's total in a message box. MAGIC will find either the predefined column containing row totals, set in the **Adjust MAGIC Options** dialog box, or will search the current row for a cell that contains the word SUM. To use this keystroke you must enable "Unpunctuated Phrases" in the **Verbosity** dialog box found under the **Speech** menu.

List Visible Cells with Data

Use **CTRL+SHIFT+D** to list only the cells with data, which are visible on the screen. This enables you to quickly access relevant cells that are visible on the current screen, skipping blank cells.

Select Hyperlink

Press **CTRL+SHIFT+H** to list all hyperlinks on the current sheet, and this dialog box allows you to either move to the cell containing the hyperlink, or activate the link.

Set Monitor Cells

Use monitor cells to observe an area of your spreadsheet as you work. Press **ALT+CTRL+SHIFT+1** to assign the cell or region of cells to the first monitor cell. Use **ALT+CTRL+SHIFT+1** through **0** on the number row to assign up to ten different monitor cells.

Move to Monitor Cell

Press **CTRL+SHIFT+M** to list all defined monitor cells, so you can move to a particular cell.

Post Monitor Cells

Use the keystroke **ALT+SHIFT+1** through **0** on the number row to display the contents of that monitor cell in a message box. For example if you have 5 monitor cells defined, and you want to know the information in the 3rd monitor cell, press **ALT+SHIFT+3**. To use this keystroke you must enable "Unpunctuated Phrases" in the **Verbosity** dialog box found under the **Speech** menu.

MAGic and Microsoft Internet Explorer

MAGic has shortcut keys to help you use Microsoft Internet Explorer 5.01 and later without relying on the mouse to access certain features.

Reformat Document	MAGic Key+F5
Select a Link	MAGic Key+F7

Listed below are detailed descriptions of the MAGic keystrokes you can use in Internet Explorer.

Reformat Document

Use **MAGic Key+F5** to reformat multiple column pages to be more readable with speech. Reformat Document rearranges multiple column pages to read in a linear fashion. Internet Explorer columns are read one after another. To restore the page to its original appearance, press **F5**.

Select a Link

Use **MAGic Key+F7** to bring up a dialog box containing a list of the links present in the page. You can then select a link by using the arrow keys or the first letter of the link. Press **ENTER** to open the selected link. You may also press the **TAB** key to move between the various controls in the **Select a Link** dialog box.

Chapter 8

Contacting Freedom Scientific



Corporate Headquarters

Freedom Scientific BLV Group, LLC
11800 31st Court North
St. Petersburg, FL 33716-1805
USA

Telephone: (727) 803-8000

Fax: (727) 803-8001

World Wide Web: <http://www.FreedomScientific.com>

Office hours: Monday through Friday 8:30 am to 5:00 pm Eastern Standard Time (USA)

Technical Support Hours: Monday through Friday 8:30 am to 7:00 pm Eastern Standard Time (USA)

Freedom Scientific Web Site

The Freedom Scientific Web site, <http://www.FreedomScientific.com>, is a comprehensive source of information regarding MAGic screen magnification software, JAWS screen reader software, training opportunities, application-specific cassette tutorials and the company that develops these products.

The Freedom Scientific Web site is designed to be accessible by people with disabilities and includes a great deal of technical support information as well as online ordering capability, RealAudio descriptions of many products, and continuous product update and maintenance downloads.

Documentation Feedback

At Freedom Scientific, we strive to produce the highest quality documentation products, and welcome your feedback. If you have comments or suggestions about our online Help or printed guides, send your e-mail messages to Documentation@FreedomScientific.com.

Sales

Contacting the Freedom Scientific Sales Department

Sales Telephone: (800) 444-4443

International Sales Telephone, including Canada: (727) 803-8000

Sales Fax: (727) 803-8001

World Wide Web: <http://www.FreedomScientific.com>

Sales e-mail: info@FreedomScientific.com

To ensure that your request is handled promptly, include your complete address and telephone number.

Office Hours: Monday through Friday,
8:30 am to 5:00 pm EST (USA)

Technical Support

You must be a registered user to access Freedom Scientific support services. Freedom Scientific support services are subject to Freedom Scientific terms and conditions in place at the time the service is used.

Reach Technical Support using the following options:

World Wide Web: <http://www.FreedomScientific.com>

Technical Support e-mail: Support@FreedomScientific.com

Technical Support Telephone: (727) 803-8600

When you call, be at your computer, have your documentation in hand, and be prepared to provide the following information:

- Product serial number used for registration.
- Product name and version number.
- Type of computer hardware you are using.
- Software version number of Windows.
- Exact wording of any messages that appear on your screen.
- What you were doing when the problem occurred.
- How you tried to solve the problem.

Technical Support Hours: Monday through Friday
8:30 am to 7:00 pm EST (USA)

Appendix A

SAPI Synthesizers on a Network

When you use **MAGic** on a network, the procedure for selecting a synthesizer other than **Eloquence** is the same as when you use a standalone version of **MAGic**.

When you update your synthesizer list in the **Voices** dialog box, the synthesizers that populate the **Available SAPI Synthesizers** list are stored in your user profile. Therefore, the next time that you log into **MAGic** this information will automatically be displayed for you.

If you move to another computer that does not have the same synthesizers installed, and attempt to change your synthesizer to one of these, you will receive a message stating, "The synthesizer you have selected is not available. Would you like this synthesizer removed from your list of available synthesizers." Choose **Yes** if you do not want to use this synthesizer on the network in the future. Choose **No** to have the synthesizer remain in your list for use on other network computers. When you choose an unavailable synthesizer, after attempting to find the synthesizer on your computer, **MAGic** will continue to use the synthesizer you were using before attempting to change synthesizers. If you select a synthesizer other than **Eloquence** as your synthesizer for your primary language, and move to a computer that does not have that synthesizer installed, when you log into **MAGic**, you will receive notification of this. Speech then defaults to **Eloquence**.

If you select a synthesizer other than **Eloquence** as your synthesizer for your secondary language, and move to a computer that does not have that synthesizer installed, when you press **MAGic Key+F11** to toggle the language, you will receive notification of this. **MAGic** then uses the same synthesizer that you have set for your primary language.

Appendix B Hot Keys

General

Start MAGic	ALT+CTRL+M
Minimize/Restore the MAGic User Interface	MAGic Key+U
Pass Through Key	MAGic Key+3
Refresh Screen	MAGic Key+ESC

Magnification, Views, & Enhancements

Increase Magnification	MAGic Key+NUM PAD PLUS or CTRL+EQUALS
Decrease Magnification	MAGic Key+NUM PAD MINUS or CTRL+DASH
Magnification Toggle On/Off	MAGic Key+DELETE
Toggle between 1x Magnification	MAGic Key+DELETE+SHIFT
Switch between Magnified Views	MAGic Key+NUM PAD SLASH
Toggle Color Enhancements On/Off	MAGic Key+F12
Toggle Cursor Enhancements On/Off	MAGic Key+F8
Toggle Mouse Enhancements On/Off	MAGic Key+F4

Panning and Screen Movement

Pan Right	MAGic Key+RIGHT ARROW
-----------	-----------------------

Pan Left	MAGic Key+LEFT ARROW
Pan Down	MAGic Key+DOWN ARROW
Pan Up	MAGic Key+UP ARROW
Increase Speed during Panning	NUM PAD PLUS
Decrease Speed during Panning	NUM PAD MINUS
Move to Left Edge of Screen in Magnified View	MAGic Key+HOME
Move to Right Edge of Screen in Magnified View	MAGic Key+END
Move to top of Screen	MAGic Key+PAGE UP
Move to Bottom of Screen	MAGic Key+PAGE DOWN
Move to Beginning of Next Line	MAGic Key+ENTER

Tracking

Tracking Toggle On/Off	MAGic Key+R
Reposition Mouse	MAGic Key+NUM PAD 5

Locator Mode

Start Locator	MAGic Key+F10
Stop Locator and Move to Selected Area	ENTER
Stop Locator without Moving the Magnified Area	ESC
Move Left	LEFT ARROW

Move Right	RIGHT ARROW
Move Up	UP ARROW
Move Down	DOWN ARROW
Move to End of Line	END
Move to Beginning of Line	HOME
Move to Top of Screen	PAGE UP
Move to Bottom of Screen	PAGE DOWN

Quick View Frame

Toggle Quick View Frame On/Off	MAGic Key+Q
Set upper left corner of frame	MAGic Key+LEFT BRACKET
Set lower right corner of frame	MAGic Key+RIGHT BRACKET
Create frame around current dialog box option	MAGic Key+LEFT BRACKET twice quickly
Open Quick View Manager	MAGic Key+9

Speech

Silence Current Speech	CTRL
Enable/Disable Speech	MAGic Key+F3
Toggle between Primary and Secondary Language	MAGic Key+F11

Note: On multi-language systems, the primary language by default is the language of the operating system. When you choose a second language, use **MAGic Key+F11** to toggle between the primary and secondary language. To set another language, do so in the **Voices** dialog box, activated from the **Speech** menu on the **MAGic** user interface.

Document Reading

Read All from Location	MAGic Key+SPACEBAR or INSERT+DOWN ARROW
Read Active Window (reads from the beginning of document window)	MAGic Key+SPACEBAR (twice) or INSERT+DOWN ARROW (twice)
Say Title Bar	MAGic Key+T or INSERT+END
Read Column from Current Position	MAGic Key+C
Read Bottom of Window	INSERT+PAGE DOWN

Text Reading

Say Current Color Block	MAGic Key+CTRL
Say Current Word	MAGic Key+ALT or INSERT+NUM PAD 5
Spell Current Word	MAGic Key+ALT (twice) or INSERT+NUM PAD 5 (twice)
Say Next Word	INSERT+RIGHT ARROW
Say Prior Word	INSERT+LEFT ARROW
Say Current Line	MAGic Key+L or INSERT+UP ARROW
Read to Cursor	INSERT+HOME
Read from Cursor	INSERT+PAGE UP
Say Current Sentence	MAGic Key+S

Say Next Sentence	MAGic Key+SHIFT+S
Say Current Paragraph	MAGic Key+P
Say Contents of Clipboard	MAGic Key+X

Note: When using the document and text reading commands, if you move the mouse MAGic reads from the current location of the mouse pointer. If you move the insertion point, MAGic reads from the location of the insertion point.

Typing Echo

Toggle announcement of uppercase letters on/off	MAGic Key+F2
---	--------------

Mouse Echo

Mouse Echo Toggle	MAGic Key+M
-------------------	-------------

Note: Toggling the mouse echo rotates between speak lines, speak words, and mouse echo off.

Some actions in MAGic do not have hot keys assigned. You can define hot keys for these features from within the **Keyboard Assignments** dialog box.

Appendix C

Windows Shortcut Keys

General

Get Help	F1
Open the Start menu	WINDOWS Key or CTRL+ESC
Open Windows Explorer	WINDOWS Key+E
Open the Run dialog box	WINDOWS Key+R
Find file or folder from Desktop	F3
Minimize all windows	WINDOWS Key+M
Switch between programs	ALT+TAB
Quit the active program	ALT+F4

For Windows and Menus

Open the application control menu	ALT+SPACEBAR
Move to the menu bar	ALT
Choose a menu command	ENTER
Move between menus	ALT, arrow keys
Close a menu	ESC
Close a cascading menu	ALT
Open a child window control menu	ALT+HYPHEN
Close a child window	CTRL+F4
Open the context menu	APPLICATION Key or SHIFT+F10

For Dialog Boxes

Move through dialog box options	TAB
Move backward through dialog box options	SHIFT+TAB
Move to another tab	CTRL+TAB
Reverse direction through tabs	CTRL+SHIFT+TAB
Move to first option	HOME
Move to last option	END
Select or clear an item in a list	SPACEBAR or CTRL+SPACEBAR
Select or clear a check box	SPACEBAR

For Reading Text

Move left one character	LEFT ARROW
Move right one character	RIGHT ARROW
Move left one word	CTRL+LEFT ARROW
Move right one word	CTRL+RIGHT ARROW
Move to beginning of line	HOME
Move to end of line	END
Move up one paragraph	CTRL+UP ARROW
Move down one paragraph	CTRL+DOWN ARROW
Scroll up one screen	PAGE UP
Scroll down one screen	PAGE DOWN
Move to beginning of document	CTRL+HOME
Move to end of document	CTRL+END

For Editing Text

Copy	CTRL+C
Cut	CTRL+X
Paste	CTRL+V
Undo	CTRL+Z
Delete character to the left	BACKSPACE
Delete character to the right	DELETE
Select one character left	SHIFT+LEFT ARROW
Select one character right	SHIFT+RIGHT ARROW
Select one word left	CTRL+SHIFT+LEFT ARROW
Select one word right	CTRL+SHIFT+RIGHT ARROW
Select to beginning of line	SHIFT+HOME
Select to end of line	SHIFT+END
Select to beginning of document	CTRL+SHIFT+HOME
Select to end of document	CTRL+SHIFT+END
Select all	CTRL+A

For Windows Explorer

Rename selected file or folder	F2
Open properties	ALT+ENTER
Refresh a window	F5
Switch between panes	F6 or TAB
Go up a level	BACKSPACE

Index

- A**
 - action 88
 - alignment 69
 - application specific functions 89
 - Internet Explorer 96
 - Microsoft Excel 92
 - Microsoft Word 89
 - authorization 4
 - auto advance 82
 - auto scroll 85
 - auto switch 70
 - automatically speak 77, 79
 - Web pages 85
- B**
 - bilingual user interface 24
 - black-and-white 55
 - blending colors 55
 - borders 57, 58, 59, 60, 63, 65
 - box 46, 51
 - brightness 54, 55
- C**
 - Clipboard 22
 - closing MAGic 15, 32
 - saving settings 15
 - color enhancements 36, 53
 - blending 55
 - brightness 54, 55
 - button 18, 36
 - color switching 56
 - contrast 55
 - inverting colors 54
 - level 55
 - Quick View Frame 63
 - restoring system colors 54
 - schemes 53
 - tint 55
- colors**
 - blending 55
 - borders 57, 58, 59, 60
 - cursor 50
 - cursor enhancements 51
 - inverting 54
 - level 55
 - monochrome 55
 - mouse enhancements 46
 - mouse pointer 45
 - Quick View Frame 63
 - switching 56
- contacting Freedom Scientific 97
- context menu 30, 33
- context sensitive help 20, 25
- contrast 55
- crosshair 45, 46
- cursor enhancements 35, 49, 51
 - attributes 50
 - button 18, 35
 - colors 50, 51
 - display 51
 - sample 51
 - schemes 50
 - size 52
 - styles 51
- cursor tracking 69

D	
dialog box reading	82
dialog box tracking	69
dialog tracking	69
display	42
document and text reading ...	81, 83
highlighting	84
hot keys	104
documentation feedback	98
dynamic lens view	43, 60

E	
Eloquence	73, 100
Excel	92
eyeglass	64

F	
factory settings	32, 49
File menu	19, 32
frames	62, 63
Freedom Scientific	19
contact information	97
technical support	98
Web site	97
full cross	65
full view	42

H	
height	47, 52
help	20, 25
highlight	83, 84
alignment	69
colors	84
styles	84
hot keys	20, 33, 34, 36, 38, 39, 40, 87, 88, 101
document reading	104

Excel	92
general	101
Internet Explorer	96
Locator	102
magnification, views, & enhancements	101
mouse echo	105
panning	101
speech	103
text reading	104
tracking	102
typing echo	105
Windows	106
Word	89

I	
incremental panning	68
installing MAGic	3
authorization	4
automatic or guided	4
network	4
Internet Explorer	96
inverting	
black and white	54
brightness	45, 46, 51, 54
colors	45, 46, 51, 54, 84
cursor enhancements	51
highlight	83, 84
Locator	64
mouse enhancements	46
mouse pointer	45

K	
keyboard	21, 28
assignments	29, 87
customizing	29
MAGic Key	86
menu	19, 28, 29, 86

keystrokes to echo..... 78

L

languages24, 72, 75, 100, 104

length47, 52

lens view.....42, 58, 59, 60

line..... 51

line delay 67

line lock 70

line wrap..... 67

Locator 18, 38, 64

border..... 65

button..... 38

hot keys..... 102

style 64

M

M button 33

MAGic Key 20, 28, 86

passing through 28

magnification 33

buttons 17, 33

display 42

enabling and disabling 33

features 41

hot keys..... 101

increasing and decreasing.34, 43

level 17, 34, 43

level button..... 34

level one..... 43

Locator..... 64

menu 19, 41

panning 65

smoothing 44

tracking 68

vertical stretch 43

view properties..... 57

Magnification button 17, 33

magnified area 44, 50, 53

magnified views 18, 34

menu bar 19, 32

menu tracking 69

minimizing MAGic on startup 23

monochrome..... 55

mouse 28, 30

mouse echo 21, 39, 40, 76

button 18

hot keys 105

speech delay 76

mouse enhancements 44

attributes 45

button 17, 35

colors 45, 46

display..... 46

pointer attributes..... 45

schemes 44

size..... 45, 47

styles..... 45

transparency 45

mouse tracking 68

moving automatically ... *see* panning

N

navigating MAGic..... 28

navigation options 70

network synthesizers..... 100

O

opening MAGic..... 15

oval..... 46, 51

overlay view..... 42, 59

P

panning..... 58, 65

changing direction 66

hot keys 101

line delay.....	67
line wrap	67
point size.....	67
quick advance.....	66
speed.....	66, 67
stopping	65
pass through.....	29
passing the MAGic Key through...	28
pitch.....	75
point size	58, 67
preferences.....	22, 32
program group.....	13

Q

Quick Access Window	33
Quick Start Guide.....	2
Quick View Frame	61
quitting MAGic.....	15, 32
QVF	61

R

reading	20, 21, 81, 82, 83
replacing colors	56
Resize View button	18, 37
resizing a view.....	37
reverse eyeglass.....	64
running MAGic at startup	4, 23

S

saving settings	16, 23, 32
schemes.....	47
color enhancements	53
creating	48
cursor enhancements.....	50
deleting.....	49
modifying	49
mouse enhancements	44
restoring factory schemes.....	49

saving.....	24
scope	46
screen savers.....	23
shortcut keys	29, 89, 92, 96, <i>see</i>
hot keys	
size	45, 47, 52, 58
smoothing	18, 38, 44
speaker	75
speech	71
buttons.....	17, 39
delay	76
document and text reading....	81, 83
enabling and disabling.....	39
hot keys	103
menu	19, 32, 71
mouse echo.....	39, 40, 76
pitch	75
rate.....	75
synchronization	81
synthesizers	73
typing echo	40, 75, 77
verbosity	78
voices	71
Web pages	85
Speech button	18, 39
speed.....	66, 67
split view	43, 57, 58
starting MAGic.....	15, 16
when Windows starts	4, 23
styles	45, 51, 64, 84
swapping colors.....	56
synchronization	81, 82
synthesizers	73, 74, 100
network.....	100
system requirements	3

T		
technical support	26, 97, 98	
tether to display	70	
thickness.....	47, 52, 57, 59, 60, 85	
tint.....	55	
title bar	31	title bar
tracking.....	68, 70	31
cursor	69	
dialog boxes	69	
dialogs and menus	69	
hot keys.....	102	
menus	69	
mouse pointer	68	
transparency.....	47, 52, 84	
triangle	51	
typing echo	18, 22, 40, 75, 77	
hot keys.....	105	
U		
uninstalling MAGic.....	13	
unmagnified area.....	44, 50, 53	
user interface	16, 31, 101	
magnification buttons	17, 33	
menu bar	32	
speech buttons.....	17, 39	
V		
verbosity.....	78, 80	
version.....	26	
vertical stretch	43	
views.....	42	
dynamic lens	35, 43, 60	
full.....	35, 42	
lens	35, 42, 58	
overlay	35, 42	
properties.....	57, 58, 59, 60	
resizing	37	
selecting	34	
split.....	35, 43, 57	
voices.....	71	
pitch	75	
primary language.....	72	
secondary language	72	
speaker	75	
speech rate	75	
W		
What's This? help	20, 25	
window tool	<i>see</i> resize view	
Word	89	

