

MAGic[®] **for Windows**

**Screen Magnification
with Speech**

User's Guide

Freedom Scientific BLV Group, LLC
May 2003

MAGic® for Windows® User's Guide

PUBLISHED BY

**Freedom Scientific BLV Group, LLC
11800 S. 31st Court North
St. Petersburg, Florida 33716-1805
USA
<http://www.FreedomScientific.com>**

Information in this document is subject to change without notice. No part of this publication may be reproduced or transmitted in any form or any means, electronic or mechanical, for any purpose, without the express written permission of Freedom Scientific.

Copyright © 2001 Freedom Scientific BLV Group, LLC, All Rights Reserved.
Copyright © 1998 Henter-Joyce, Inc., All Rights Reserved.

MAGic and JAWS are registered trademarks of Freedom Scientific BLV Group, LLC in the United States and other countries. OPENBook, WYNN, and Connect Outloud are trademarks of Freedom Scientific BLV Group, LLC in the United States. Microsoft, Windows NT, Windows 2000 Professional, Windows 95, Windows 98, Windows Me, and Windows XP Home/Pro, Word, Excel, and Internet Explorer are registered trademarks of Microsoft Corporation in the U.S. and/or other countries. Other product and company names mentioned herein may be the trademark of their respective owners.

Table of Contents

Introduction MAGic User's Guide	5
About This Book	5
Items Checklist	5
Documentation Conventions	5
Chapter 1 Quick Start Guide.....	7
Welcome to MAGic	7
System Requirements	8
Installing MAGic.....	8
Authorize MAGic.....	9
Register MAGic.....	9
Initial Registration.....	9
Uninstalling MAGic.....	10
Getting Started.....	10
Opening MAGic	10
Closing MAGic.....	11
Overview of MAGic for New Users.....	11
Magnification and Speech Buttons	11
MAGic Menus	13
Basic MAGic Hot Keys	14
Getting Help	14
Chapter 2 Navigating MAGic	16
Use Your Mouse and Your Keyboard	16
Using the Keyboard with MAGic	16
The MAGic Key	16
Customizing the Keyboard	17
Using the Mouse with MAGic	18
Point & Click	18
Left Click vs. Right Click.....	18

Chapter 3 User Interface	19
Title Bar.....	19
Menu Bar.....	20
Quick Access Window.....	20
The Magnification Buttons.....	21
The Speech Buttons.....	25
Chapter 4 Magnification	27
Magnification Features	27
The Magnification Menu.....	27
Display.....	27
Mouse Settings.....	29
View Properties	33
Locator.....	37
Color.....	38
Panning.....	39
Tracking	42
Chapter 5 Speech	43
MAGic Speaks.....	43
The Speech Menu.....	43
Voices	43
Mouse Echo.....	48
Typing Echo.....	49
Verbosity.....	50
Synchronization	52
Document and Text Reading.....	54
Chapter 6 Keyboard	58
MAGic Key	58
Keyboard Assignments.....	58
Customizing Hot Keys	59
Options.....	60

Chapter 7 Application Specific Functions	61
MAGic and Microsoft Word	61
MAGic and Microsoft Excel	64
MAGic and Microsoft Internet Explorer	68
Chapter 8 Contacting Freedom Scientific	69
Freedom Scientific Website	69
Documentation Feedback	70
Sales	70
Technical Support	70
Appendix A Using HJAuth	72
Using HJAuth	72
Appendix B SAPI Synthesizers on a Network	74
Appendix C Hot Keys	75
General	75
Magnification Hot Keys	75
Magnification, Views, & Color	75
Panning and Screen Movement	75
Tracking	76
Locator Mode	76
Speech Hot Keys	77
General	77
Document Reading	77
Text Reading	77
Mouse Echo	78

Appendix D Windows Shortcut Keys..... 79
 General..... 79
 For Windows and Menus 79
 For Dialogs 80
 For Reading Text 80
 For Editing Text..... 81
 For Windows Explorer..... 81

Glossary 82

Index..... 88

About This Book

The *MAGic User's Guide* teaches you to use and customize MAGic's magnification and speech capabilities to fit your personal needs. The first chapter, the Quick Start Guide, gives you the basics to get up and running with MAGic. Following the Quick Start Guide is a more complete guide to all of MAGic's features. Finally you will find appendices that include perforated keystroke reference cards. However you decide to use this book, we will guide you to a more productive computing experience with magnification and speech.

Items Checklist

In your MAGic package, you should find the following items. If you discover damaged or missing items, please contact your retailer.

- CD Wallet containing one program CD-ROM, and either an authorization or update diskette
- Registration diskette
- *MAGic User's Guide*

Documentation Conventions

In the MAGic User's Guide we will refer to various commands, menu options, and other selections. To make reading this guide as simple as possible, we have included a sample of the following conventions.

A hot key is a combination of keys pressed on the keyboard, which will invoke the same response regardless of the application you are currently using. A hot key can be a single key on the keyboard, but more commonly it is several keys pressed in combination. For example, **ALT+CTRL+M** requires you to press all three keys simultaneously.

Alternatively, shortcut keys invoke a different action depending on the application in which you are currently working. Shortcut keys also can be one key, or multiple keys pressed in combination. Shortcut keys may also require you to press a sequence of keys, such as **ALT+F, O**. This requires that you press the **ALT** key and the **F** key, release them, and then press the letter **O** key. These hot keys and shortcut keys will appear in bold text throughout the User's Guide.

Welcome to MAGic

MAGic is a software solution ideally suited for vision-impaired computer users, or anyone who spends extended periods of time in front of a computer screen.

In addition to magnifying your computer screen, MAGic also reads your programs and documents clearly and audibly. MAGic synchronizes magnified print with speech. MAGic also highlights words and lines as it speaks them.

You see and hear what you are typing. You see and hear menus, buttons, and other window controls. MAGic lets you enlarge Microsoft Windows application screens, dialogs, and windows from 2 to 16 times their normal size on your PC. MAGic also provides several different magnified viewing options.

MAGic tracks the movements of one or more objects, such as the mouse, menus, dialogs, and so on. Screen locators give you a visual reference of magnified views in relationship to the unmagnified portion of your screen.

The MAGic multi-directional panning system gives you complete control during screen review with adjustable speed, direction, stop and start, and screen navigation controls.

For easier viewing, you can reverse screen colors and customize the shape and color of your mouse pointer.

If you have a magnification only version of MAGic, and want to upgrade to a speech version, contact Freedom Scientific Sales.

Choose to run the Automatic or Guided installation of MAGic. The Automatic installation assumes that you want to install all languages, and you approve of the default location where MAGic installs on your hard drive. If you want to specify which languages to install and/or where MAGic is stored on your computer, use the Guided installation.

Instructions for installing MAGic on a Network can be found in the online help system.

Authorize MAGic

The authorization key contains the information your computer needs to run MAGic. MAGic prompts you for either an authorization disk or an update disk, if you received one. Follow the instructions that appear on the screen to complete your authorization of MAGic.

If you do not have a current authorization key, you can run MAGic for a total of 150 hours in demonstration mode. After the demonstration trial period elapses, you will need a current authorization key if you want to continue using the software.

For more information about MAGic Authorization, see Appendix A, Using HJAuth.

Register MAGic

Initial Registration

MAGic prompts you to register the first time you run the program. MAGic will only prompt you to register if you have not previously registered. MAGic lets you choose to register now or later. If you choose to register later, MAGic will prompt you to register each time you launch the program.

If you choose to register later, and you check the checkbox, "Do not show this dialog," you need to manually register later. To access the registration dialog later, select Register MAGic from the Help menu.

Note: If you are running a site, district, or enterprise license version of MAGic, you will not be prompted for registration.

We recommend you register MAGic as soon as you start the software. After you choose the option to register now, fill in the edit fields. Those preceded with an asterisk are required fields. Use the **TAB** key to move around the dialog box, select **Next** to move to the next page of the registration. Use the **Back** button if you need to move backward through the registration to change any of your information. Use the **RIGHT** and **LEFT ARROW** keys to move through the options in the combo boxes.

On the last screen of the registration, a combo box asks you to select a method to send your information to Freedom Scientific. Choose to send your information via the Internet using your Internet connection, if you have one; or save the information to a floppy disk and mail it to Freedom Scientific. If you choose to send it via traditional mail, MAGic prompts you to enter the registration disk, which is provided with the software. If you send your registration via e-mail, you will receive a dialog box thanking you for your registration information.

Changing Your Registration

If you need to change your registration information, such as your address or phone number, select **Update Registration** from the **Help** menu. The same series of dialog boxes appear that you used for your initial registration. Change the necessary information, and send it again.

Uninstalling MAGic

To uninstall MAGic go to the **Program** menu and select the **Uninstall MAGic** option in the **MAGic** submenu.

Getting Started

Opening MAGic

MAGic gives you a variety of ways to launch the program.

- Press the hot key, **ALT+CTRL+M**, which is automatically assigned when you install MAGic.
- Double-click the **MAGic** icon on your desktop.
- Go to the **Start** menu, select **Programs**, and then select **MAGic**, and select **MAGic** from the **MAGic** submenu.

After you open MAGic for the first time, you can set MAGic to begin running when Windows starts. To make this selection, choose **Run MAGic at Startup** from the **File** menu.

Closing MAGic

Close MAGic like any other Windows application by pressing **ALT+F4**, point the mouse and left click on the X in the top right hand corner of the window, or select **Exit** from the **File** menu. As you exit, MAGic prompts you to save any settings that you changed. MAGic also confirms that you want to close the program.

Overview of MAGic for New Users

Start MAGic by pressing **CTRL+SHIFT+M** or by double-clicking the MAGic program icon on your Windows desktop. You can also start MAGic by clicking the **Start** menu and choosing **Programs, MAGic, MAGic**.


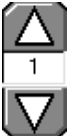









When you first start MAGic, your screen is displayed in 2X magnification using the Full view. Speech will also be enabled. You can change the magnification level, magnified view, speech, and many other options by using the MAGic user interface.

The user interface is a small window that appears in approximately the center of your display. This window allows you to control all aspects of MAGic and contains the magnification and speech buttons in addition to the MAGic menu and title bars.

For more information on the MAGic user interface, please refer to *Chapter 3 User Interface*.

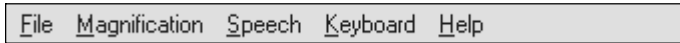
Magnification and Speech Buttons

One of the first things you will notice about the user interface is the rows of blue and orange buttons. The blue buttons control magnification features while the orange buttons control speech. Below are brief descriptions of each button.

Button	Function
	Click the Magnification button to enable or disable magnification.
	The current magnification level can be adjusted with the two Magnification Level buttons.
	Click the Mouse Enhancements button to enable/disable mouse enhancements. Mouse enhancements change the appearance of your mouse pointer.
	Click the Inverse Colors button to enable/disable the Invert Colors feature. This features inverts the colors displayed on your screen.
	Click the Locator button to enable/disable the Locator function. The Locator function allows you to find items on your screen.
	Click the Smoothing button to enable/disable smoothing. This feature smoothes the appearance of jagged letters in a magnified state.
	The Resize View button allows you to change the dimensions of your magnified view.
	Select your preferred magnified view from the Magnified Views combo box.
	Click the Speech button to enable or disable speech.
	Click the Mouse Echo button to toggle the mouse echo feature on and off. The mouse echo feature enables MAGic to read text that you point at with the mouse.
	Click the Typing Echo button to enable or disable the typing echo. If typing echo is enabled, MAGic announces the words or characters you type.

MAGic Menus

Located above these buttons is the menu bar. The menu bar allows you to customize speech, magnification, and your keyboard. You can also view help information and perform other functions. Each menu is described below. Click the links to learn more about each menu.



Menu	Purpose
<u>F</u>ile	The File menu allows you to save your settings and restore the original Freedom Scientific settings. You can also use this menu to exit MAGic and automatically run MAGic when your PC starts.
<u>M</u>agnification	The Magnification menu allows you to customize how you view your screen with MAGic. You can also change mouse options, panning settings, view properties and more.
<u>S</u>peech	You can customize MAGic's speech components to fit your particular needs. The Speech menu allows you to customize how you hear MAGic.
<u>K</u>eyboard	The Keyboard menu allows you to customize how you use your PC's keyboard with MAGic. You can re-assign the MAGic Key to a different key, manage shortcut keys, and more.
<u>H</u>elp	The Help menu provides you with detailed help information for the various MAGic functions and options. You can also view information on the newest features for this release and see your current MAGic version.

What's This? Help

MAGic's What's This? Help is context-sensitive help that you can use as a reference when working with MAGic's user interface or dialog boxes. Press **SHIFT+F1** on any button on the user interface, or control in a dialog box to see a brief description of the purpose of the control and how to use it.

MAGic Users' Guide

We provide you with the content of the MAGic online help system in the *MAGic User's Guide*, which is printed in large text for easier reading. The manual contains the Quick Start Guide to get you started, followed by detailed description of MAGic's features, and also pull out reference cards.

Technical Support

If you do not find the answers to questions or problems that you have, contact Freedom Scientific Technical Support, (727) 803-8600.

About MAGic

Select About MAGic from the Help menu on the MAGic user interface to view the version number of MAGic you are currently running.

Use Your Mouse and Your Keyboard

With MAGic, you can use both your mouse and your keyboard to access most features. You decide what is best for you. Many people use a combination of the two. The MAGic documentation gives you information on how to perform actions with both the keyboard and the mouse. For example, you can either press **ALT+F** to access the file menu, or you can point and click the word *File* with the mouse.

Using the Keyboard with MAGic

The MAGic Key

When you use the keyboard in MAGic, the most important thing to know is the MAGic Key. The default MAGic Key is the **CAPS LOCK** key on your keyboard. Using the MAGic Key in combination with other keys activates a MAGic command if one is assigned, otherwise it will pass the key combination through to the application. Pressing the MAGic Key by itself and releasing it will not carry out any action. You can specify what key you use for your MAGic Key in the MAGic Key dialog, which is activated from the Keyboard menu. Your choices include: Extended Insert (found on the six pack), Num Pad Insert, Either Insert, or Scroll Lock (the key just above Home).

Pass the MAGic Key Through

If your MAGic Key is set to the default of **CAPS LOCK**, how do you use your **CAPS LOCK** key as usual?

Press the **CAPS LOCK** key twice quickly, and Caps Lock will turn on. To turn off Caps Lock, again press the key twice quickly. Use this double key press to pass through any of the MAGic Keys that you use. For instance, if you select **INSERT** as your MAGic Key, press the **INSERT** key twice to use the actual insert function.

Pass Through Key Command

If you have an application that uses the same keystroke combination as one assigned to **MAGic**, you can pass the keystroke combination through to the application, so it will not function as a **MAGic** keystroke in that instance.

Press **MAGic Key+3** (on the number row), and then press the keystroke you want to use in the application. Use the pass through command for any key combination that is used in **MAGic** and in other applications.

With **MAGic**, you can customize all of your keystrokes in the Keyboard Assignments dialog, activated from the Keyboard menu. If you specify certain keystrokes for use in **MAGic**, you may need to use these keystrokes in other applications. Keep the pass through command of **MAGic Key+3** in mind when you customize keystrokes.

Customizing the Keyboard

The Keyboard menu allows you to customize how you use your PC's keyboard with **MAGic**. The Keyboard menu allows you to re-assign the **MAGic Key** to a different key, manage shortcut keys, and differentiate between the left and right **ALT**, **SHIFT**, and **CTRL** keys. The Keyboard menu provides the following options:

- Choose **MAGic Key** from the **Keyboard** menu to change which key is assigned to the **MAGic Key**. You can assign the **MAGic Key** to either the **CAPS LOCK** key, extended **INSERT** key (found on the six pack), **NUM PAD INSERT** key, either **INSERT** key, or the **SCROLL LOCK** key (located just above **HOME**).
- Choose **Keyboard Assignments** from the **Keyboard** menu to view the current hot keys assigned to actions, assign different hot keys, remove hot keys, or restore the hot keys to the default settings.
- Choose **Options** from the **Keyboard** menu to differentiate between the left or right **CTRL**, **ALT**, and **SHIFT** keys for hot key combinations.

Refer to Chapter 6 Keyboard for detailed information on these commands.

Using the Mouse with MAGic

Point & Click

With MAGic you don't have to learn keystrokes to perform actions. You can use the mouse to point at items on the user interface, and click the buttons to activate features. For example, to invert screen colors, just point at the Inverse Colors button, click with the left mouse button, and the colors on your screen change.

If you are not sure how to activate a feature, use your mouse to open the menus and find the feature you need.

Left Click vs. Right Click

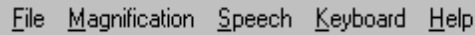
The left mouse button is the more commonly used mouse button, because it activates buttons and menus. Alternatively, the right mouse button provides useful shortcuts to many items found under MAGic's menus.

Right click on many of the buttons on the user interface to see a context menu. Depending on where you right click on the user interface, the menus change. Use your right mouse button to access the most common features associated with the buttons on the MAGic user interface.

If you are not a mouse user, you can activate context menus with the **Application key** on the keyboard. Locate the **Application key** just to the left of the right **CTRL** key in the bottom row on your main keypad. Use the **TAB** key to place the focus on the button that you want to see the context menu for, and press the **Application key** to see the menu. Then use the **UP** and **DOWN ARROWS** to move through the menu choices.

Menu Bar

The MAGic menu bar contains five menu titles: File, Magnification, Speech, Keyboard, and Help.



File Magnification Speech Keyboard Help

To open these menus press **ALT** and the underlined letter, for example, press **ALT+F** to open the **File** menu.

The File menu contains four items:

- **Run MAGic at Startup** – When checked, MAGic runs automatically after you log on to your computer.
- **Save Settings** – When you change options found in the **Magnification** and **Speech** menus, select **Save Settings** to store your preferences for the next time you run MAGic.
- **Restore Factory Settings** – Select this menu item to reset MAGic options to the state they were in when you installed MAGic. Selecting this option returns all features to the original settings, except hot keys that you customize. Press the **Restore Defaults** button in the **Keyboard Assignments** dialog to revert all hot keys to their original configurations.
- **Exit** – Exiting MAGic closes the program. If you have made any changes, MAGic prompts you to save those settings upon exiting the program.

Find information about the **Magnification** and **Speech** menus in the Chapters 4 and 5.

Quick Access Window

MAGic's Quick Access Window provides controls to help you easily access the main MAGic features. Use the buttons on the user interface to control both magnification and speech. Left click the button to activate the feature, and right click the button to see a context menu for some of the buttons. Only some buttons contain context menus.

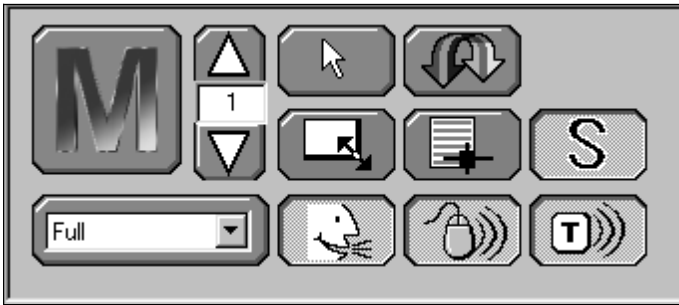


Figure 1 Quick Access Window

The Magnification Buttons

Use the blue buttons on the MAGic user-interface to control magnification.

Magnification Button

Use this button to enable or disable magnification.



When MAGic opens, the screen is magnified two times its normal size. Press the magnification button to turn off magnification. If the **M** on the magnification button is animated, then magnification is turned off.

Hot Keys

Enable or Disable
Magnification

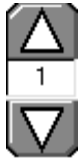
MAGic Key+DELETE

Magnification Level Button

Increase or Decrease Magnification Level with this button.

The Magnification Level button is actually two buttons. The upper button, with the upward arrow image, increases the magnification level, while the lower button, with the downward arrow image, decreases the magnification level. The number between the two buttons shows the current magnification level. The default level of magnification is 2x (2x is equivalent to two times the normal screen display). If you press the **TAB** key to move into the area where the number appears, use your **UP** and **DOWN ARROW** keys to increase or decrease magnification.

It is possible to change the magnification level to 1. This will prevent the M button from rotating and provide access to some magnification features, such as using the locator.



Hot Keys

Increase Magnification **MAGic Key+NUM PAD PLUS**
or **CTRL+EQUALS**

Decrease Magnification **MAGic Key+NUM PAD MINUS**
or **CTRL+HYPHEN**

Mouse Enhancements Button

Change the appearance of your cursor with this button.

After you change the properties of your Magnified View Mouse and the Unmagnified View Mouse, press the **Mouse Enhancement** button to enable the changes. Press the button again to return to the standard mouse.



Right click the **Mouse Enhancement** button to quickly access the **Magnified Mouse**, **Unmagnified Mouse**, or **Navigation Options** tabs of the **Mouse Settings** dialog.

Locator Button

Activate the Locator with this button.

To find items on your screen, press the Locator button. Move the Locator with your mouse or your arrow keys. Change the properties of the Locator with the **Locator Properties** dialog, which you can access from the **Magnification** menu. Also you can right click the **Locator** button to change the Style and Border of your Locator.



Hot Keys

Enable Locator Mode **MAGic Key+F10**

Disable Locator Mode **ESC**

Inverse Colors Button

Change your display colors with this button.

Press the **Inverse Colors** button to invert the colors of the display. Press it again to toggle the colors back to normal. Right click the Inverse Colors button to choose what views should be inverted when Inverse Colors is enabled. You may choose to invert only the Magnified View, only the Unmagnified View, or All Views.



Hot Keys

Invert Colors **MAGic Key+F12**

Smoothing Button

Toggle Smoothing on or off with this button.

Press the Smoothing button to smooth the appearance of jagged letters in a magnified state. Press the button again to turn Smoothing off.



Resize View Button

*When working in Split, Overlay, or Lens Views, use the **Resize View Button** to turn on the Windows Tool. This appears as a pointer used to resize or move the view.*



You must be in the Split, Overlay, or Lens view, and magnification must be active to use the **Resize View** button. When the **Resize View** button is available it appears blue. If it is gray, you need to turn on magnification, by pressing the **Magnification** button on the **MAGic** user-interface. After you press the **Resize View** button, notice that the cursor changes shape, and that **MAGic** automatically minimizes the user-interface. The shape of the mouse indicates in which direction you can click and drag your mouse to move or resize your view.



If the pointer appears as an X, like above, it is not positioned over the view or one its borders. The X indicates that from this position the view cannot be resized or moved.



A bi-directional cross indicates the ability to move the view to a different location on your screen. Click the view, and while holding the mouse button down drag the view to another location. Split view only moves to the top, bottom, left, or right edge of your screen, while you can move Overlay to any location on your screen.



A vertical pointer indicates that resizing will occur in a vertical direction, larger or smaller.



A horizontal pointer indicates that resizing will occur in a horizontal direction, either larger or smaller.



A diagonal pointer indicates that resizing will occur in both vertical and horizontal directions. MAGic only exhibits the diagonal mouse when you position the mouse over the corner of the view. The diagonal pointer is only available for the Overlay and Lens views.

Magnified Views Combo Box

Select your favorite magnified view from the combo box on the MAGic user-interface.

You can select Full, Lens, Overlay, or Split for your magnified view. Full magnifies the entire screen, while each of the others only magnifies a portion of your screen at a time. Right click the **Magnified Views Combo Box** to quickly access the properties for the Split, Lens, or Overlay views.



The Speech Buttons

The three orange buttons at the bottom right of the MAGic user-interface allow you quick access to MAGic's speech capabilities. From here, you can enable or disable Speech, Mouse Echo, and Typing Echo.

Note: When a button is pressed or enabled the background color of the button will have a checkerboard pattern. This will cause the enabled buttons to appear lighter in color.

Speech Button

Click this button to enable or disable speech.



If the button appears with the mouth opened, like this one, then Speech is enabled.



If the button appears with the mouth closed, then Speech is disabled.

Right click the **Speech** button to quickly access the **Voices** dialog.

Hot Keys

Toggle Speech

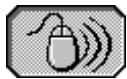
MAGic Key+SHIFT

Mouse Echo Button

Click this button to toggle the Mouse Echo.



If the button appears with white lines to the right, the Mouse Echo is turned off.



If the button appears with black lines to the right, the Mouse Echo is turned on.

To set Mouse Echo to announce lines or words, right click the button and make your selection from the context menu. You can also set mouse movement to stop speech from this context menu.

Hot Keys

Mouse Echo Toggle

MAGic Key+M

Typing Echo Button

Click this button to toggle the Typing Echo on and off.



If the **Typing Echo** button appears to have white lines extending from the right side, the Typing Echo is turned off.

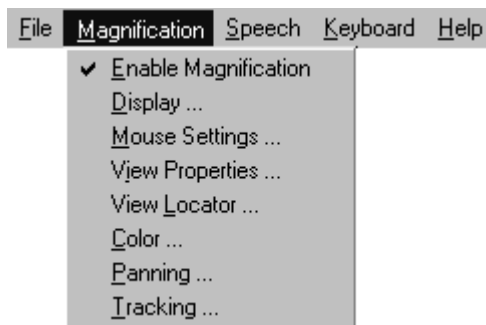


If the **Typing Echo** button has black lines extending from the right side, then the Typing Echo is turned on. To specify the typing echo to words or characters, you need to activate the **Typing Echo** dialog from the **Speech Menu**, or right click and choose **Automatically Speak**. Choosing **Keystrokes to Echo** lets you modify how much MAGic echoes back to you.

Magnification Features

With MAGic's extensive magnification features, you can customize your display to fit your low vision needs.

The **Magnification** menu, found on the menu bar, contains all of the controls to change the appearance of your display.



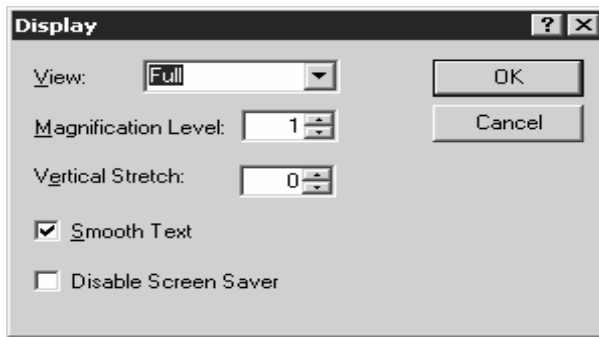
The first item on the **Magnification** menu, **Enable Magnification**, lets you activate or deactivate magnification. If the menu item appears with a checkmark next to it, magnification is enabled. If there is no checkmark, magnification is disabled.

Remember that the blue buttons on the user-interface allow you quick access to the basic magnification features.

The Magnification Menu

Display

The **Display** dialog box, accessed from the **Magnification** menu, lets you control a variety of magnification features.



View

The **View** combo box contains the choices, Full, Lens, Overlay, and Split.

Full magnifies the entire screen.

Lens opens a small rectangular window, which is magnified, while leaving the remaining desktop unmagnified. The Lens moves around the screen as you move your mouse or when the focus moves.

Overlay creates a magnified window on the corner of the screen, while the rest of the screen remains unmagnified. This is similar to the Lens View, although the Overlay View does not move around the screen.

Split allows you to see both an unmagnified view and a magnified one at the same time. The Split View opens a magnified window on part of your screen, but leaves the other part unmagnified as a reference.

Views with Level 1 Magnification

You can make the Lens, Overlay, and Split views active in all magnification levels, including 1x. Using these views with level 1 magnification can be helpful, if you invert the colors of either the magnified or unmagnified view. You then have two images, one with normal colors, and one with inverted colors.

Using these features in level 1 magnification is also helpful if you use the Lens view with **Resize to Control** turned on. Activate **Resize to Control** from the **Lens** page of the **View Properties** dialog box. Press the **TAB** key to move through items in a dialog, and you will see a border around the Lens view. You can customize the border to make the controls easy for you to see.

Magnification Level

Press the **UP** or **DOWN ARROW** keys to increase or decrease the current magnification level. Magnification levels range from the same size as the normal display, all the way up to 16 times the size of the normal display.

Vertical Stretch

Vertical Stretch allows you to stretch the display to make images taller while maintaining the characters current width.

Smooth Text

Smoothing compensates for the stair-step effect, as screen objects get larger during magnification. Smoothing is on by default. You can turn Smoothing on or off with the **Smoothing** check box.

Disable Screen Saver

For those screen savers that do not work well with MAGic running, place a check in the **Disable Screen Saver** check box. When you close MAGic, the screen saver is automatically re-enabled.

Mouse Settings

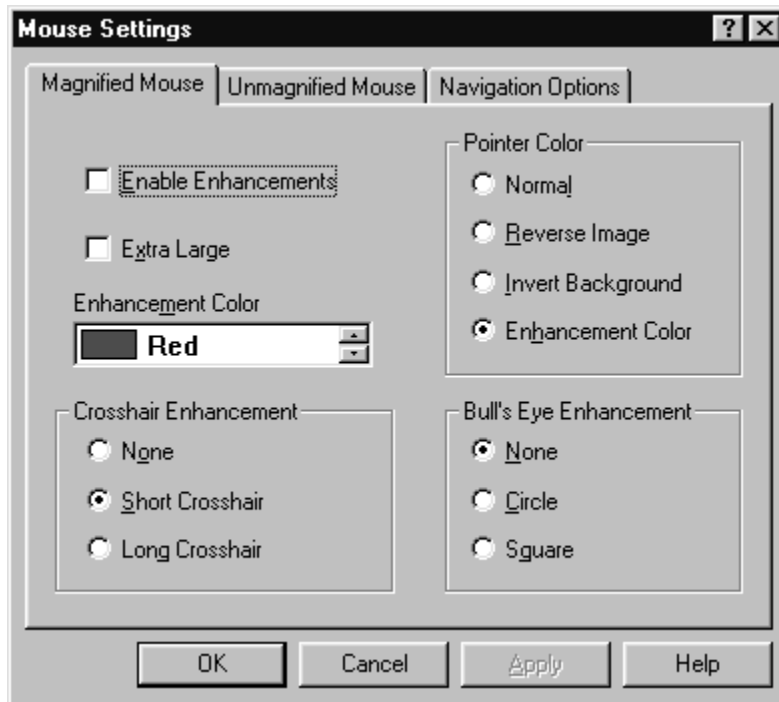
From the **Magnification** menu, choose **Mouse Settings** to control the appearance of your mouse while in the magnified and unmagnified views. You can also set mouse navigation options.

Any adjustments you make to the mouse enhancements will take effect when you enable mouse enhancements by clicking the **Mouse Enhancements** button on the MAGic User Interface. You can also select the **Enable Enhancements** check box to activate your changes.

Note: Selecting the **Enable Enhancements** check box on either page of the **Mouse Settings** dialog selects the check box for both pages of the dialog.

Magnified Mouse

This tab allows you to define mouse enhancements for the mouse pointer in magnified views.



Enable Enhancements

Select this check box to activate the enhancements you set in this dialog box. You can disable the mouse enhancements by clearing this check box or by clicking the **Mouse Enhancements** button on the **MAGic** user interface.

Extra Large

Select this check box to increase the size of the mouse pointer to double the standard mouse pointer size.

Enhancement Color

Select a color for your enhancements. **MAGic** uses this color for the pointer color (if you select the **Enhancement Color** option), crosshair enhancement, and bull's eye enhancement.

Pointer Color

Select one of the following pointer color enhancements:

- **Normal** – Displays the enhanced mouse pointer using the default colors. This is typically white with a black border.
- **Reverse Image** – Reverses the colors of the enhanced mouse pointer.
- **Invert Background** – The enhanced mouse pointer becomes transparent with the background showing through with inversed colors, which increases contrast. The black border remains around the pointer.
- **Enhancement Color** – The enhanced mouse pointer's color is changed to the color you select in the **Enhancement Color** field.

Crosshair Enhancements

Select one of the following crosshair enhancements:

- **None** – No crosshair is shown.
- **Short Crosshair** – Adds short vertical and horizontal crosshairs centered at the tip of the enhanced mouse pointer.
- **Long Crosshair** – Adds vertical and horizontal crosshairs through the center of the

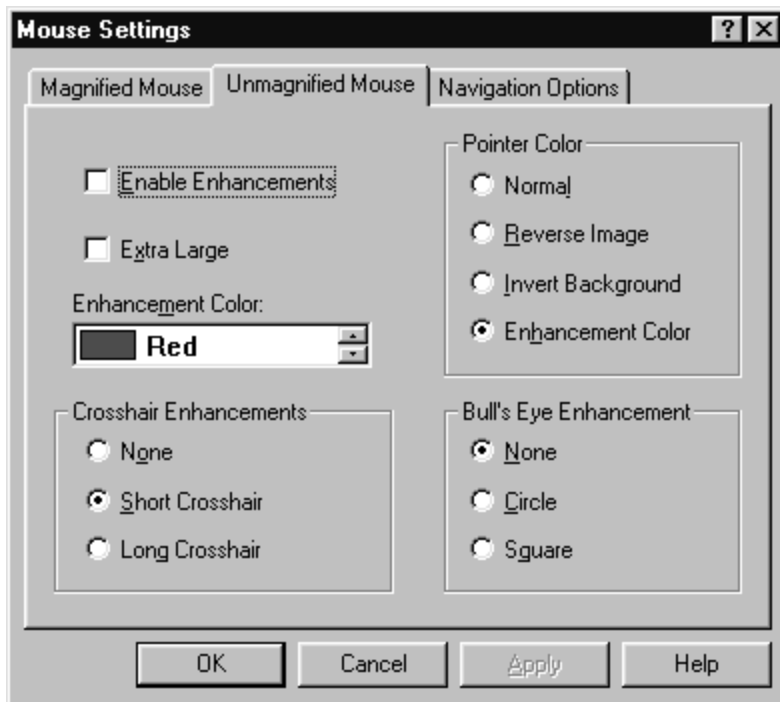
Bull's Eye Enhancements

Select one of the following bull's eye enhancements:

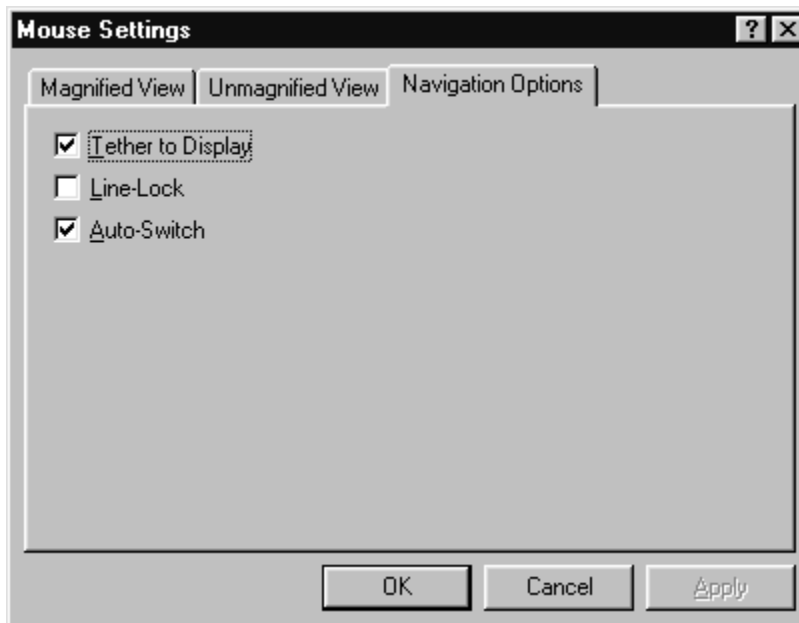
- **None** – Does not apply a bull's eye to the enhanced mouse pointer.
- **Square** – A square appears around the enhanced mouse pointer.
- **Circle** – A circle appears around the enhanced mouse pointer. If you select this option, you will see some flickering as you move the mouse around the screen.

Unmagnified View

The options available on this tab are identical to the options described for the **Magnified Mouse** tab.



Navigation Options



Tether-to-Display

When this check box is checked, the mouse is "tethered," or attached, to the magnified display. As soon as you move the mouse, the mouse automatically snaps into view at the current magnified location, even if the mouse was not initially visible on the display. When disabled, your view moves to the location of the mouse.

Line-Lock

When checked, the mouse will move only in the horizontal and vertical directions. If you move the mouse in a diagonal direction, MAGic moves the mouse in the closest direction.

Auto-Switch

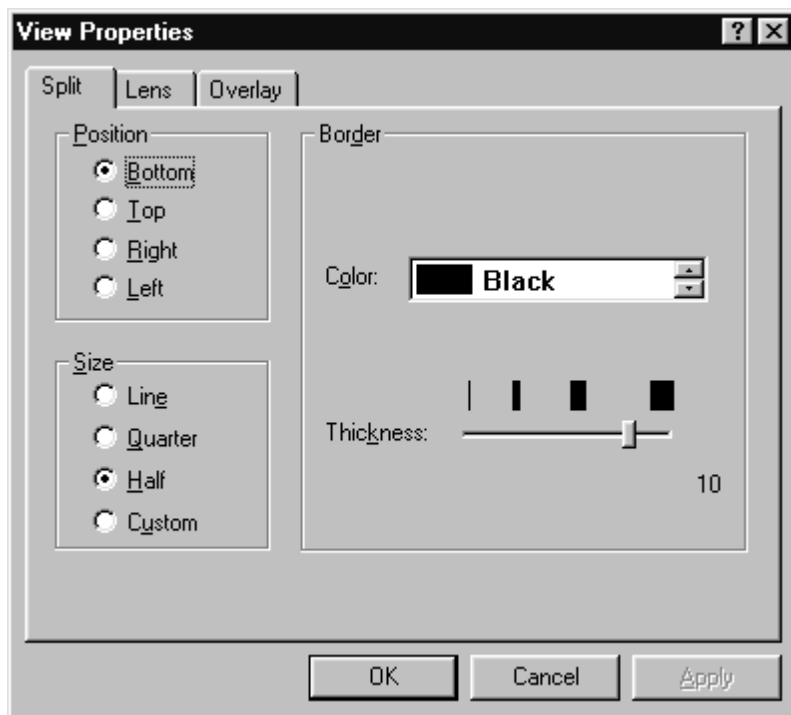
When this check box is checked, centered and relative mouse tracking remain still after you stop mouse movement. The screen is stationary as long as you move the mouse within the boundary of the screen. When you move beyond the edge of the screen, tracking movement begins again. Auto-switch is useful when you want to move the mouse toward stationary objects on the screen.

View Properties

From the **Magnification** menu, choose **View Properties** to customize how the Split, Lens, or Overlay magnified views appear on your screen.

Split View

The **Split** tab allows you to define properties for the Split view. Split view allows you to see both an unmagnified view and a magnified view at the same time. The Split view opens a magnified window in part of your screen, but leaves the other part unmagnified as a reference.



Position

Select where you want the magnified portion of the split to appear on the screen. Select Bottom, Top, Left, or Right.

Size

Select how much of the screen you want the magnified portion of the split to occupy. For example, if you select **Quarter**, the magnified portion of the split occupies 25% of the available screen area.

If you select **Line**, the magnified portion of the screen occupies a size equal to one line of text, as specified in the **Point Size** field of the **Panning** dialog box. By default, **Custom** size is equivalent to one-third of the screen, but you can resize the split by using the **Resize View** button.

Color

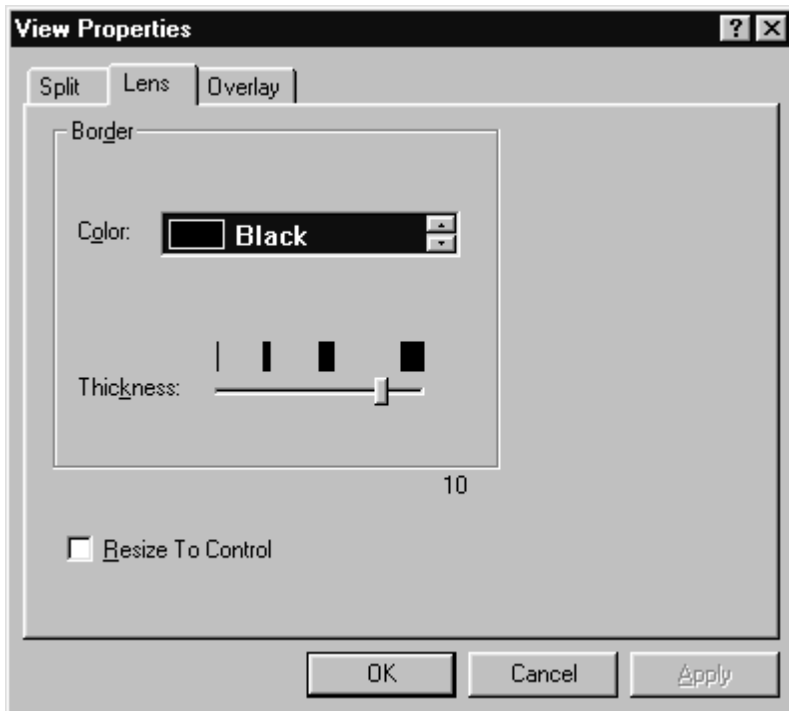
Select from one of sixteen different colors for the border of the split divider.

Thickness

Move the slider bar to increase or decrease the thickness of the split divider. The bars above the slider indicate the widths you can select.

Lens

The **Lens** tab allows you to define properties for the Lens view. Lens view opens a small rectangular window, which is magnified, while leaving the remaining desktop unmagnified. The lens moves around the screen as you move your mouse or when the focus changes.



Color

Select from one of sixteen different colors for the border of your lens.

Thickness

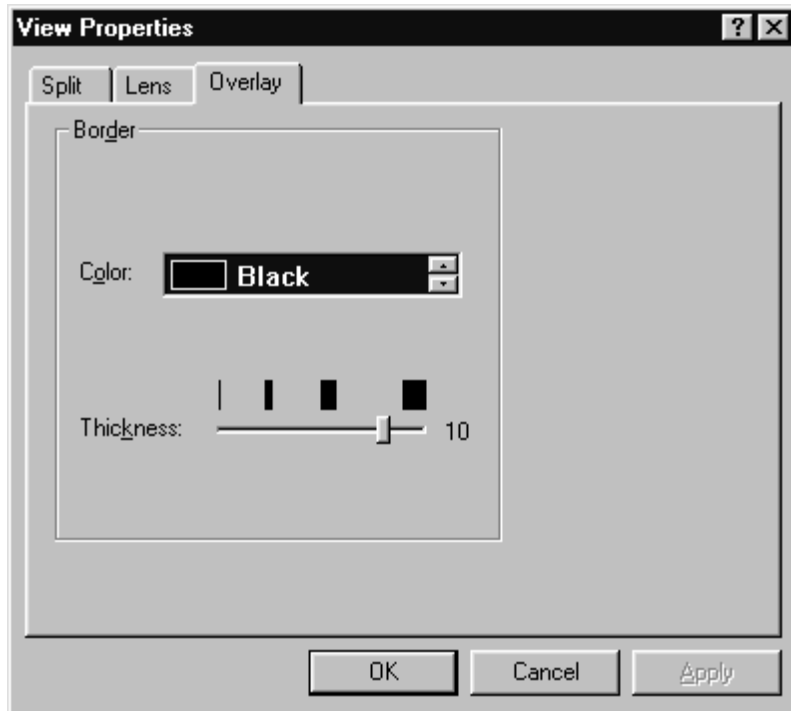
Move the slider bar to increase or decrease the thickness of the lens border. The bars above the slider indicate the widths you can select.

Resize To Control

Select this check box to resize the Lens view to exactly fit the control that currently has focus. The feature is useful when navigating with the keyboard. As you press the **TAB** key to move through a dialog, the lens changes size to fit the control with focus and **MAGic** magnifies the area. The border, if you have set one, surrounds the control. If you navigate with the mouse, the lens remains the standard size.

Overlay

The **Overlay** tab allows you to define properties for the Overlay view. Overlay view creates a magnified window in the corner of the screen, while the rest of the screen remains unmagnified. This is similar to the Lens view, but the Overlay view does not move around the screen.



Color

Select from one of sixteen different colors for the border of your overlay.

Thickness

Move the slider bar to increase or decrease the thickness of the border. The bars above the slider indicate the widths you can select.

Locator

Activate the **Locator** dialog from the **Magnification** menu. Here you can set the style of the Locator you want to use. To activate the Locator, press the **Locator** button on the **MAGic** user-interface.

When you activate the Locator, the full screen is temporarily presented unmagnified. The default Locator is the **Full Cross**, which shows an area in inverse colors. Move the Locator around using the mouse or the arrow keys, and use the Locator to find something on your screen. Press the arrow keys to move around the screen. Use **PAGE UP** to move to the top of the screen, **PAGE DOWN** to go to the bottom, **HOME** to go to the beginning of a line, and **END** to go to the end of a line. After you have located the item, press the left mouse button, or **ESC** to return to your magnified display. The area you covered last with the Locator is now in your magnified view.



Style

Choose from three different styles for your locator:

Full Cross – Shows a portion of the screen in reversed colors. In magnification 3x or higher, the Locator appears with crosshairs running through the center of the block. With magnification set to 2x the Locator appears as a block of inversed colors.

Eyeglass – Shows a square on the screen that is magnified while the rest of the screen is normal size.

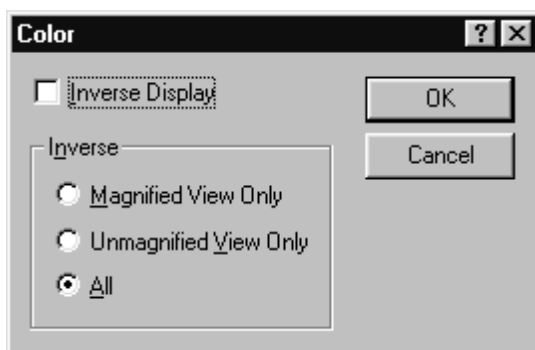
Reverse Eyeglass – The same as the Eyeglass, except the colors are reversed.

Border

Specify what kind of border you want to appear around your Locator. The customizable border only applies to the Eyeglass and the Reverse Eyeglass options. Choose one of the sixteen available colors for the border of your Locator.

Color

MAGic lets you invert the colors of your screen. You can invert the magnified image, the unmagnified screen, or both. Your choice of inverted areas will apply regardless of your selected magnified view. Select **Color** from the **Magnification** menu to specify your colors.



Inverse Display – Select this check box to invert the colors that are displayed on your screen. Then specify the areas to invert with this option activated.

Magnified View Only – Magnified images are inverted, while unmagnified views are unchanged.

Unmagnified View Only – Only the unmagnified view is inverted, while all magnified views appear unchanged.

All – The display is always inverted including magnified and unmagnified views.

