

# **MAGic™ for Windows®**

---

## **Quick Start Guide**

Henter-Joyce, Inc.

# **MAGic™ for Windows® Quick Start Guide**

Copyright © 1998, 1999, 2000

## **Henter-Joyce, Inc.**

11800 31st Court North  
St. Petersburg, FL 33716-1805

March, 2000

Phone (800) 336-5658

Or (727) 803-8000

FAX (727) 803-8001

<http://www.FreedomScientific.com>

MAGic and JAWS are trademarks of Henter-Joyce, Inc. Microsoft, Windows, Windows NT, and Microsoft Word are trademarks of Microsoft Corporation.

NT is a trademark of Northern Telecom Limited.

## **Notice of Software License**

The license agreement, which is included with this product, specifies the rights of use. Unauthorized duplication of this product in any medium is strictly prohibited. (You may make backup copies. You may copy for use on your home and business systems, provided they are not used concurrently.)

## **Notice of Change**

All information contained in this document is subject to change without notice.

# Getting Started

---



MAGic is a powerful software solution for vision-impaired computer users, or anyone who is required to spend extended periods of time in front of a computer screen.

MAGic enlarges your favorite Microsoft Windows program screens, dialogs, and windows from 2 times to 20 times their usual size on your desktop, laptop, or notebook computer.

Everything you need is available on a single user interface. MAGic offers several different magnification views: full-control panning, multiple-object tracking, screen color and size settings, configurable mouse pointers, and keyboard access to each dynamic MAGic feature.

## System Requirements

### MAGic for Windows 95/98/NT

Microsoft Windows 95, 98 or NT must be installed on your system before you can set up MAGic for Windows. Follow the instructions provided by the Microsoft Corporation for proper setup of Windows. This version of MAGic cannot be used with Microsoft Windows 3.1 or earlier products.

**Note:** Your monitor should be set for 256 colors or more. MAGic will not work with just 16 colors.

## **MAGic for Windows**

---

Microsoft Active Accessibility must be installed on your system, and is available on your MAGic CD in the MCS directory.

All other MAGic requirements are the same as those specified for Microsoft Windows 95, 98, and NT. See your Microsoft Windows product documentation for a list of these hardware requirements.

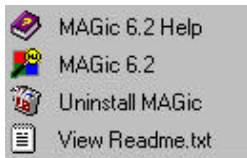
### **Installing MAGic**

**To install MAGic for Microsoft Windows, follow these steps:**

1. Insert the MAGic CD into your CD drive.
2. The MAGic Setup program starts. Follow the instructions that appear on your screen.
3. If your MAGic installation CD does not start automatically, click the Start button, select Run, and type **D:\setup**, depending on the location of your CD drive.
4. Follow the instructions that appear on your screen.

**Note:** If you have JFW 3.5 or higher, during installation you will be asked if you want to have JFW used along with MAGic. Saying yes will cause a copy of the MAGic 6.2 Keyboard Layout added to the copy of JFW on the hard drive. No other changes will occur unless the user has created keystrokes or written customized scripts in JFW.

## Uninstalling MAGic



From the Program Menu, select MAGic 6.2 and in the submenu select “Uninstall MAGic.”

## Starting MAGic



After installation, the MAGic application group appears in Start Menu/Programs.

MAGic offers a number of options to start the program. The preferred method is to automatically start MAGic whenever Windows starts. However, several other methods are presented from which you can choose.

**Using a Hot Key**      Select this option during installation.

## **MAGic for Windows**

---

- Use the Start Menu** Click the MAGic program icon in the Start Programs menu.
- Desktop Icon** Right Click on the winmagic.exe icon in Windows Explorer and select "Send To." When the submenu opens. Select Desktop (Create Shortcut).
- Start Menu** Drag and drop the MAGic icon from the Desktop to the START button. When you release the mouse button a shortcut will appear in the START menu.

### **To Start MAGic Minimized**

1. Right-click the MAGic icon that you created.
2. Click "Properties" when the shortcut menu opens.
3. Click the "Shortcut" tab of the dialog.
4. Click the arrow on the Run drop-down list box, then highlight and click "Minimized."
5. Click OK or press ENTER to save the Shortcut setting.
6. Click the MAGic program icon to start MAGic.

### To Run MAGic



To run the MAGic program click on the round Magnification button on the user interface (the key with the MAGic Rabbit). MAGic will run magnification with the default settings for magnification view, level, colors, etc.

### Using JFW with MAGic

In MAGic 6.2 it is possible to have JAWS for Windows 3.3 or higher versions speaking while MAGic is running. It is necessary to select a tracking engine and then you will be able to run the two programs together.

To run both MAGic and JFW together;

1. Select Tracking Engine from the MAGic Preference menu.
2. Select one of the JFW options.

**Note:** If you select one of the JFW options for this feature, and do NOT have JAWS, the result will be no tracking at all.

3. Click on Ok and press ALT+F4 to exit MAGic.
4. Select Save Settings on Exit.
5. Restart MAGic. It opens speaking using JFW.

## Graphical User Interface



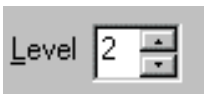
When you have started MAGic the graphical user interface appears unless you have chosen to start minimized.

MAGic uses a single-window user interface with all the necessary control buttons in view for quick access to all MAGic features.

## Magnifying Your Screen



When you start MAGic for the first time, the Magnification button is off and your screen is unmagnified. Click the Magnification button in the center of the MAGic user interface to magnify the full screen.



To increase the magnified viewing area, click the arrows on the Level spin box. Different magnified views (MAGicViews) are available for your selection through the MAGicView combo list box control.

**Note:** When viewing a menu during magnification, you may find that using the arrow keys to

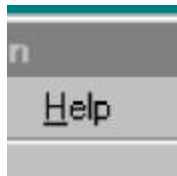
move from item to item is easier than using the mouse pointer.

Also, you can quickly end most tasks by pressing ESC.

## Getting Help



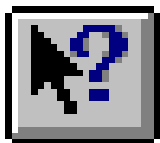
**F1 for Help** - Anytime the MAGic user interface is active, press F1 to access the MAGic Help Topics window.



**Help Menu** - Click “Help” on the Menu Bar of the MAGic user interface, or press the shortcut keys, ALT+H. Use the Help menu to view help topics, MAGic version details, and MAGic serial number information. You can select the “What’s This?” command, then point and click controls for context-sensitive help.



**Toolbar Help** - Click the Help button on the Toolbar to view details about MAGic, such as version number and copyright information.



You can click the “What’s This?” button, highlight any control or menu item on the user interface, then click to view context-sensitive help about the selected control or task.

**Context-sensitive Help** – Highlight almost any dialog box or user interface control, and then simultaneously press SHIFT+F1 to view pop-up help

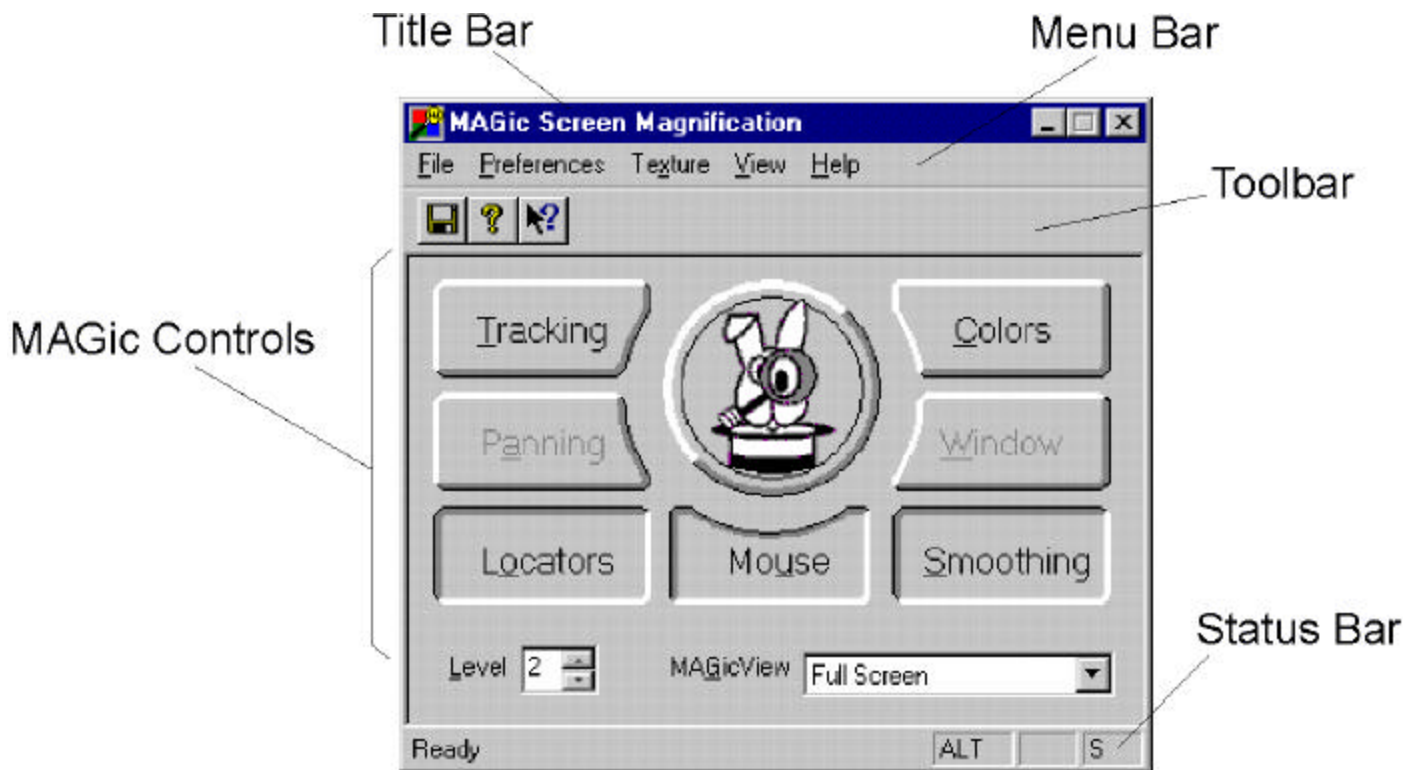


panels with information about the control and its function. This shortcut key works the same as the “What’s This?” button on the Toolbar and the “What’s This?” item on the Help menu.

**Status Bar Help** - The Status Bar (located at the bottom of the user interface) presents brief task definitions and other informational messages when menu items or controls are highlighted.

# MAGic User Interface

---



See the ***MAGic Users Guide*** for further information on running MAGic.

# MAGic Hot Keys

---

<b>ACTION</b>	<b>KEYSTROKES</b>
Align Center Tracking	CTRL+SHIFT+PERIOD
Align Continuous Tracking	CTRL+SHIFT+COMMA
Align Edge Tracking	CTRL+SHIFT+E
Align Predictive Tracking	CTRL+SHIFT+SLASH
Center Mouse in View	CTRL+SHIFT+C
Color Button Toggle	ALT+CTRL+O
Custom Mouse Toggle	ALT+CTRL+U
Go to Mouse	CTRL+SHIFT+H
Go to Bottom Left of Window	[Fixed] ALT+END
Go to Bottom Right of Window	[Fixed] ALT+PAGE DOWN
Go to Top Left of Window	[Fixed] ALT+HOME

## Quick Start Guide

---

<b>ACTION</b>	<b>KEYSTROKES</b>
Go to Top Right of Window	[Fixed] ALT+PAGE UP
Inverse Mouse Color MAGicView	CTRL+SHIFT+I
Inverse Mouse Color RealView	ALT+CTRL+SHIFT+I
Level Lower Magnification	ALT+CTRL+LEFT ARROW
Level Mouse MAGicView Lower	CTRL+SHIFT+DOWN ARROW
Level Mouse MAGicView Raise	CTRL+SHIFT+UP ARROW
Level Mouse RealView Lower	ALT+CTRL+SHIFT+DOWN ARROW
Level Mouse RealView Raise	ALT+CTRL+SHIFT+UP ARROW
Level Raise Magnification	ALT+CTRL+RIGHT ARROW
List Task Tray Icons	INSERT+F11
Locator Toggle	CTRL+SHIFT+L
MAGic Window	ALT+CTRL+M

## MAGic for Windows

<b>ACTION</b>	<b>KEYSTROKES</b>
Magnification Toggle	CTRL+ACCENT
Magnify Full Screen	ALT+CTRL+F
Manual Panning Key Toggle	ALT+CTRL+SHIFT+M
Next MAGicView Mouse Style	None
Next MAGicView Style	ALT+CTRL+V
Next RealView Mouse Style	None
Pan From Location	ALT+CTRL+P
Pan From Top of Screen	ALT+CTRL+SHIFT+P
Pan From Top of Window	CTRL+SHIFT+W
Refresh Screen	CTRL+SHIFT+R
Resize MAGicView	CTRL+SHIFT+Z
Scroll Down	[Fixed] ALT+DOWN ARROW
Scroll Left	[Fixed] ALT+LEFT ARROW

## Quick Start Guide

---

<b>ACTION</b>	<b>KEYSTROKES</b>
Scroll Right	[Fixed] ALT+RIGHT ARROW
Scroll Up	[Fixed] ALT+UP ARROW
Set Smoothing Color At Mouse	None
Show MAGicMouse Location	CTRL+SHIFT+F11
Show RealMouse Location	CTRL+SHIFT+F12
Smooth Custom Color Selector	CTRL+SHIFT+X
Smooth Custom Color Toggle	ALT+CTRL+SHIFT+S
Smooth Black and White Toggle	CTRL+SHIFT+S
Start MAGic Task List	INSERT+F10
Toggle Focus Prompt and Control	CTRL+SHIFT+GRAVE (`)
Track Cursor MAGicView Toggle	None
Track Dialog Toggle	None

## MAGic for Windows

ACTION	KEYSTROKES
Track Menu Toggle	None
Track Mouse Toggle	None
Track Toggle	CTRL+SHIFT+T

**Note:** Keystrokes preceded by the word “Fixed” cannot be changed through the Hot Keys Change dialog box. You can create your own Keystrokes for Actions with “None” as the designated Keystroke.

