

Henter-Joyce, Inc.

January 2000

Phone (800) 336-5658
Or (727) 803-8000
FAX (727) 803-8001

<http://www.FreedomScientific.com>

MAGic and JAWS are trademarks of Henter-Joyce, Inc.
Microsoft, Windows, Windows NT, Active Accessibility, and
Microsoft Word are trademarks of Microsoft Corporation.

NT is a trademark of Northern Telecom Limited.

Notice of Software License

The license agreement, which is included with this product, specifies the rights of use. Unauthorized duplication of this product in any medium is strictly prohibited. (You may make backup copies. You may copy for use on your home and business systems, provided they are not used concurrently.)

Notice of Change

All information contained in this document is subject to change without notice.

What's New in MAGic 6.2?	2
About This Book	3
Installing MAGic.....	5
Uninstalling MAGic	6
Terminology	6
Using the Mouse or the Keyboard	7
Getting Started with MAGic	9
Starting MAGic.....	9
Graphical User Interface	10
To Run MAGic	11
Closing MAGic.....	11
Getting Help	13
MAGic Publications.....	13
Online Help System	14
Toolbar Help	15
Status Bar Help.....	16
Context-Sensitive Help	18
Online Documentation	18
The MAGic User Interface.....	21
Interface Components	21

Magnification Button	45
Setting Up Separate MAGicViews	48
Level Spin Box.....	49
MAGicView Combo Box	50
Customizing Hot Keys	56
Actions and Keystrokes	58
Unassigned Actions	58
Fixed Keystrokes	58
New Application Specific Hot Keys.....	59
Changing Hot Keys.....	65
Tracking Options.....	68
Tracking Objects.....	68
Setting Tracking Preferences	68
Track Items.....	69
Track Alignment.....	71
Predictive Settings.....	73
Mouse Routing	75
Panning Options.....	78
Panning an Application.....	78
Manual Panning.....	78
Full-Screen Panning	80

Preferences	91
Border	93
Mouse Options.....	95
Mouse Options.....	95
Choosing a Mouse Style	97
Mouse Configuration Decisions	100
Change Custom Mouse Type	103
Smoothing Options	108
Using Smoothing	108
Delay Smoothing	110
Windows Options	112
Adjusting MAGicView Windows.....	112
Moving or Resizing MAGicViews.....	112
Changing Size and Color of Borders	115
Colors Options.....	118
Choosing Your Viewing Colors	118
Setting Up Color Preferences	119
Setting Up MAGic Screen Settings.....	121
Choosing Masking Preferences.....	122
Appendix A About Authorization Keys	124
Backup Considerations.....	125

Authorization Reset Code.....	130
Software License Agreement	133
MAGic Hot Keys.....	139
Windows Shortcut Keys	145
Glossary of Terms	151
Index	156



MAGic is a software solution ideally suited for vision-impaired computer users, or anyone who is required to spend extended periods of time in front of a computer screen.

You can enlarge Microsoft Windows application screens, dialogs, and windows from 2 times to 20 times their usual size on your PC, laptop, or notebook. MAGic provides several different magnified viewing options.

MAGic makes moving anywhere on the screen easy by tracking the movements of one or more objects, such as the mouse, menus, dialogs, and so on. Screen locators give you a visual reference of magnified views in relationship to the unmagnified portion of your screen.

The MAGic multi-directional panning system gives you complete control during screen review with adjustable speeddirection, stop and start, and screen navigation controls.

with button controls and Hot Keys to make access to MAGic features quick and easy, whether you use a mouse or your keyboard.

You can quickly fine-tune the magnification attributes of MAGic by setting preferences for magnification, panning, tracking, Hot Keys, and more.

What's New in MAGic 6.2?

- Increased video card compatibility
- Increased performance
- In addition to 8 bit color support (256 colors), now supports 16, 24, and 32 bit color, resulting in the ability to display millions of colors
- Enhanced smoothing
- Black and White and Custom Smoothing replace Basic and Background.
- Added toggle keystroke (CTRL+SHIFT+`) to switch between Prompt and Control when in very high magnification levels.

- field focus, document reformat, list links, and list frames have been added.
2. Excel: Keystrokes to bring up column and row settings, list of cells, rows, cells with comments and all cells with content keystrokes have been added.
 3. MS Word: Keystrokes to bring up a list of comments and hyper-links have been added.
 4. Windows: Keystrokes to bring up a list of system tray items and a list of all open application windows have been added.
- Default settings have changed (i.e. border width on overlay lens is thicker, default custom mouse is red crosshair, separate views are turned off by default).
 - Added functionality with JFW 3.5 to use specific MAGic keyboard layout to avoid JFW and MAGic keystroke conflicts.

About This Book

This book is part of the help and instruction material available to you with MAGic.

Note. This note indicates that a **Note** follows with additional information about the feature or procedure you are currently reading.

Information that you are required to enter from the keyboard is printed in the following type style:

C:\Winmagic.exe.

A keystroke can be a single key on the keyboard or several keys that are pressed in combination. For example: ALT+F requires you to hold down the ALT key and press the F key. Sequences of keys may also be specified. ALT+F, O means pressing the ALT and F keys in combination, releasing them, and then pressing the letter O. In many applications, this sequence will bring up the File Open dialog.

Both Microsoft command keystrokes and MAGic Hot Keys are used to quickly start MAGic tasks. They will be presented in the format shown above.

Windows settings should include:

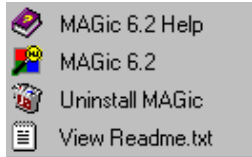
- Your monitor should be set for 256 colors or more. MAGic will not work with just 16 colors.
- Microsoft Active Accessibility must be installed on your system, and is available on your MAGic CD in the MSC DLLs directory.

To install MAGic for Microsoft Windows follow these steps:

1. Insert the MAGic CD into your CD drive.
2. The MAGic Setup program starts. Follow the instructions that appear on your screen.
3. If your MAGic installation CD does not start automatically, you can click the Start button, select Run, and type **D:\setup**, depending on the location of your CD drive.
4. Follow the instructions that appear on your screen.

hard drive. No other changes will occur unless the user has created keystrokes or written customized scripts in JFW.

Uninstalling MAGic



From the Program Menu, select MAGic 6.2 and in the submenu select “Uninstall MAGic.”

Terminology

MAGic documentation (printed and online) uses a few unique terms you may want to get familiar with before you begin using MAGic. These terms are defined in the in the Glossary at the back of this book.

You can use the mouse and Hot Keys interchangeably or in combination, the choice is yours.

For example, to start MAGic, you can click on the icon on the desktop or press CTRL+ALT+M.

For further information on using the mouse, please refer to the Microsoft Windows Help.

A listing of commonly used Windows shortcut keys are included on the ***MAGic Quick Reference Cards***, in the MAGic Help files, and at the back of this guide.

Starting MAGic

MAGic offers a number of options to start the user interface. The preferred method is to automatically start MAGic whenever Windows starts. However, several other methods are presented from which you can choose.

- | | |
|---------------------------|--|
| Using a Hot Key | Select this option during installation. |
| Use the Start Menu | Click the MAGic program icon in the Start Programs menu. |
| Desktop Icon | Right Click on the winmagic.exe icon in Windows Explorer and select "Send To." When the submenu opens. Select Desktop (Create Shortcut). |
| Start Menu | Drag and drop the MAGic icon from the Desktop to the START button. When you release the mouse button a shortcut will appear in the START menu. |

3. Click the “Shortcut” tab of the dialog.
4. Click the arrow on the Run drop-down list box, then highlight and click “Minimized.”
5. Click OK or press ENTER to save the Shortcut setting.
6. Click the MAGic program icon to start MAGic.

Graphical User Interface

When you have started MAGic the graphical user interface appears unless you have chosen to start minimized.

MAGic uses a single-window user interface with all

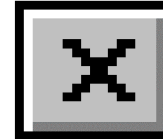




To run the MAGic program click on the round Magnification button on the user interface (the key with the MAGic Rabbit). MAGic will start running with the default settings for magnification view, level, colors, etc.

Closing MAGic

Click the Close button in the right corner of the MAGic user interface Title Bar or use the following shortcut command ALT+F4.



Save Settings on Exit

When you exit MAGic, by default you are asked if you want to save any setting changes.

However, you can change this default to automatically save changes when you exit. From the Preference Menu, select Save Settings on Exit and click on “Always Save Settings on Exit.”

will be able to run the two programs together

To run both MAGic and JFW together;

1. Select Tracking Engine from the MAGic Preference menu.
2. Select one of the JFW options.

Note: If you do not have a copy of JAWS for Windows on your system, you will have no tracking unless you select HJTrack. See [Choosing a Tracking Engine](#).

3. Click on Ok and press ALT+F4 to exit MAGic.
4. Select Save Settings on Exit.
5. Restart MAGic. It opens speaking using JFW.



MAGic features several help options. Your MAGic package contains several valuable publications, as well as an extensive online help system to assist you in learning and using

MAGic.

MAGic Publications

You will find a number of printed documents included with MAGic.

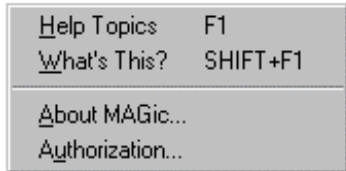
Quick Start Guide Learn how to install MAGic, take a quick tour and learn a few of the more important Hot Keys that will come in handy as you use MAGic.

Users Guide The Users Guide serves as a reference to features and functions of MAGic.

Reference Cards Find the Hot Key combination you need to accomplish a task or initiate a command from your keyboard.

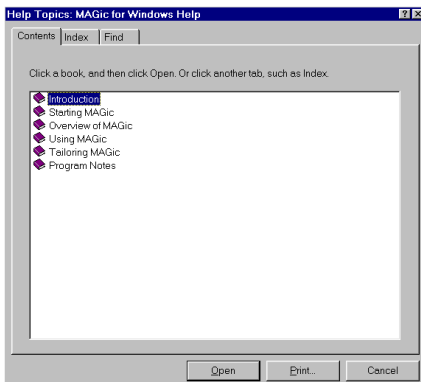
helpful definitions of most MAGic command buttons, menus, and dialog elements.

Online Help Topics



Online help provides a comprehensive online guide to MAGic functions, feature definitions, step-by-step task procedures, and answers to frequently asked questions about using MAGic. See the following methods of accessing help topics:

F1 for Help



Anytime the MAGic user interface is active, press F1 to access the MAGic Help Topics window.

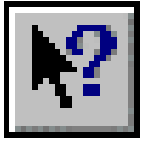
user interface includes access to help topics, context help, and MAGic version and authorization

information. Use the Shortcut key ALT+H to open the help menu.



Toolbar Help

information, such as
copyright and version number.



Click “What’s This?”
button to turn the mouse
pointer into a combined
arrow and question mark, just as
the “What’s This?” command
(described above). Point to
objects on the MAGic user
interface, such as buttons,
menus, or windows, and click to
view help for that item.

Status Bar Help



The optional Status Bar displays helpful information
about menu items and option buttons. It is available by
checking Status Bar on the View menu.

Help Messages

The Status Bar presents brief
task definitions and other
informational messages when

following help message appears in the Status Bar, “Specify hot keys for MAGic tasks”. Similarly, passing the mouse pointer over the Toolbar displays the function of each button along the left side of the Status Bar.

Note: When you are using a magnification level of 3x or above, both the open menu and Status Bar help will not be in view at the same time.

Status Symbols

The Status Bar displays Smoothing and Separate View status. An **S** appears when basic Smoothing is turned on and **CS** appears when Black and White Smoothing is selected. **SEP** appears in the Status Bar when the current MAGicView has separate preference settings.

The Status Bar will also indicate whether the Manual Panning Key

Another method for getting context-sensitive help is to highlight or click an object or item, and then press SHIFT+F1.

This help option is available on all MAGic control buttons. Use Tab to cycle from one control to another. After the control is highlighted (dotted outline appears on the control), press SHIFT+F1 to access the control's context-sensitive help.

For example, when you highlight the Magnification button, by tabbing through the MAGic control buttons, then press SHIFT+F1, a definition of the Magnification feature is displayed in the pop-up window.

Online Documentation

MAGic also provides an online readable text file of this Guide and the ***MAGic for Windows Quick Start Guide***. You can browse these online documents using a simple text editor or a Windows word processing application. You can also print these documents.

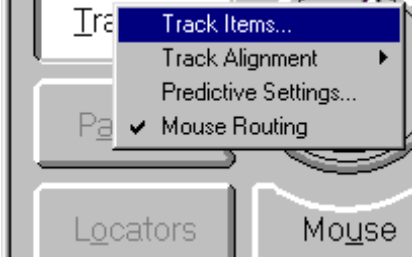
QSTART.DOC Quick Start Guide Word File

QSTART.TXT Quick Start Guide Text File

You can access these files by going directly to the **c:\MAGic62\Manuals\ENU** directory that was set up during installation on your system's hard disk.

Before you start using MAGic, take a moment to familiarize yourself with the MAGic user interface. The MAGic user interface is divided into the following sections: Title Bar, Menu Bar, Toolbar, MAGic Controls, and Status Bar.





clicking any
MAGic
command
button
opens

individual shortcut menus where
you can make setup and
preference changes for each
feature.

For example, right-clicking the
Tracking button displays the
Tracking shortcut menu.

Note: Shortcut menus are available for all MAGic
control buttons even if a button is unavailable
(dimmed), for example, when Level 1 (no
magnification) is used.

Title Bar

The Title Bar includes the MAGic icon, title, and button
choices that you can use to maximize, minimize and

SIZE, and Maximize commands are unavailable on the MAGic System menu. The shortcut keystroke to open this menu is ALT+SPACE BAR.

To move the MAGic user interface, place your mouse pointer on the Title Bar of the user interface, click and hold down the left mouse button, drag the user interface to a new location, then release the button.

Note: You cannot change the size of the MAGic user interface.

Menu Bar

A Menu Bar, located just below the Title Bar, presents menu names for several commonly used MAGic tasks. Menus include File, Preferences, Texture, View, and Help.

All menu names presented on the Menu Bar include one character that is underscored. Pressing this shortcut key, while simultaneously pressing ALT, opens the desired menu.

or press the shortcut keys ALT+F. The File menu includes the following task commands: Save and Exit.

Save

When clicked, this command saves all currently changed MAGic

preferences settings.

This option does not close MAGic. Magnification remains unchanged. The Save Icon can also be used.



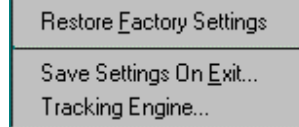
You can also save MAGic options anytime by pressing CTRL+S.

Exit

When you exit MAGic, your screen will no longer be magnified. Use ALT+F4 to close MAGic.

Preferences Menu

restore factory default settings, and to decide how you want to save settings whenever you exit MAGic.



To access the Preferences menu, click the name “Preferences” on the Menu Bar. The Preferences menu is also available by right-clicking the Magnification button on the MAGic user interface.

Hot Keys

Hot Keys are made up of a combination of keystrokes that, when simultaneously pressed, initiate a MAGic task (action). For example, CTRL+ALT+V changes your current MAGicView to the next MAGicView.

Click “Hot Keys” on the Preferences menu to access the Hot Keys dialog box where you can view or change Hot Keys. You can also use ALT+P, then K.

a dialog. Click “Tracking” on the Preferences menu to access the Tracking dialog box where you can view or change Tracking options.

The keystroke for this is ALT+P, T.



Another way to access this feature is to right-click on the Tracking Button.

By default, mouse tracking is on and available when MAGic starts and Magnification is turned on. Click the Tracking button to toggle tracking on or off. Right-click the Tracking button to access tracking options for the mouse pointer.

Panning

When magnification is on, and an application is running, you can use Panning to explore the application window without

Panning dialog box where you can view or change Panning startup options.



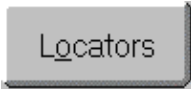
You can also use the keystroke ALT+P, P.

Right-click the Panning button will also access these settings.

You can change the direction and speed of panning by using navigational keys, such as arrow keys and the PLUS or MINUS keys. During magnification, click the Panning button to hide the MAGic user interface and begin panning.

Locators

Locators give you an indication of where the current MAGicView is in relation to your full computer screen. To have the RealView pane display a rectangle that shows the area of the magnified view click “Locators” on the Preferences menu to access the



You can also right-click the Locators button. You can then select the color and type of border and background you want.


Note: Locators are only available in RealView when split or overlay screens are selected.

RealMouse and MAGicMouse

Some MAGicViews that display both a MAGicView and RealView will show two mouse pointers.

The mouse pointer you see in the MAGicView is called the MAGicMouse and the mouse pointer you see in the RealView is called the RealMouse.

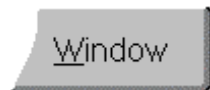
Click either “MAGicMouse” or “RealMouse” on the Preferences menu to access their respective dialog

 the Mouse Button.
MAGic provides a number of mouse pointer shapes, sizes, and colors from which you can select to customize your magnification view.

When you first click the Mouse button, the default setting is red Combined Crosshair style pointer in the MAGicView. Right-click the Mouse button to select other custom mouse settings.

Once you have established your custom mouse settings, click the Mouse button to toggle your custom mouse pointer on or off.

Window



You can customize the size of several MAGicViews using the built-in Window Tool. Click “Window” on the Preferences menu or right-click on the Window Button to access the Window dialog box where you can view or change Window Tool options.

Window Tool settings.

Separate

MAGicViews

Use the Separate View feature to give certain MAGicViews an individual set of attributes, such as screen color and magnification level. Click “Separate MAGicViews” on the Preferences menu to access the Separate Views dialog to view or set up separate MAGicViews. Use the keystroke ALT+P, S.

Restore Factory

Settings

Click “Restore Factory Settings” on the Preferences menu to reset the default settings that were shipped with your original MAGic package. The keystroke is ALT+P, F.

Whenever you make changes to the settings or options of a MAGic feature, such as Panning, Smoothing,

retains a copy of the original file in case you wish to restore the original settings to DEFAULT.MCF.

Once the “Restore Factory Settings” task is initiated, your changes to the default file are erased and the original file is restored. At this point, you can go to the option menus of various MAGic features and make new setting decisions as you wish.

Save Settings

on Exit

As default, MAGic asks if you wish to save changes to preferences settings before you exit. However, you can click “Save Settings on Exit” on the Preferences menu to access the Save Settings Options dialog box where you can change this default. The keystroke is ALT+P, E.

The Save Settings Options dialog box appears. Check one of the following options:

This option never prompts you. Instead it always automatically resets settings to factory defaults.

Tracking Engine Use this menu item to select the Tracking Engine you want to use. If you select one of the JAWS for Windows engines you can run JFW and MAGic at the same time.

Tracking is a MAGic feature that allows you to stay automatically focused on active objects in the MAGicView. An active object can be the mouse pointer, a text cursor (caret), a menu, or a dialog.

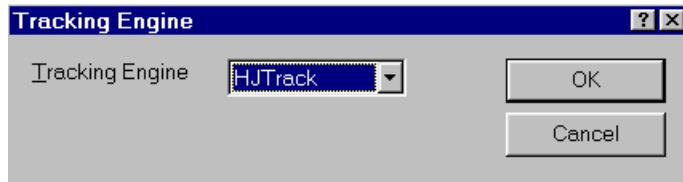
The MAGic Tracking engine (HJTrack) offers a superior tracking system that was developed by Henter-Joyce for both JAWS for Windows (screen-reading program) and MAGic for Windows (screen magnification program).

The HJTrack engine allows tracking in previously difficult areas, such as Microsoft Office[®] menus and command bars, Microsoft Internet Explorer[®] windows, and Microsoft Excel[®] spreadsheet screens.

supported tracking engines. Click "Tracking Engine" on the Preferences menu to open the Tracking Engine dialog box and choose the tracking engine that best fits your working preferences.

HJTrack does not handle speech or Braille functions that are necessary for JFW.

If you wish to run JFW along with MAGic, you have the option of using the JFW tracking engine. This engine adds additional code impact when running MAGic, but also adds the benefits of speech, Braille, and several additional application customization features.



Choose one of the available options by clicking the arrow on the "Tracking Engine" drop down list box and highlighting one of these choices:

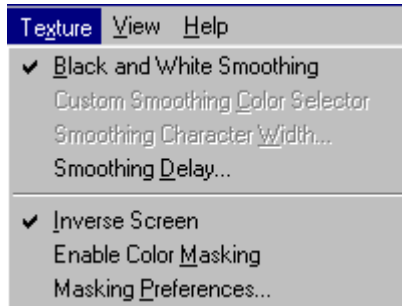
HJTrack

This option includes a limited set of JAWS functions that is available with MAGic. If you do not have a

installed on your computer, you can select this option by clicking on the version that you have installed, This will allow the use of JFW functions when MAGic is running.

Note: If you select one of the JFW options for this feature, and do NOT have JAWS, the result will be no tracking at all.

Texture Menu



The
Texture
menu
provides
two
important

screen-viewing tools: color and smoothing. Use the tasks in this menu to change settings for Black and White Smoothing and screen color options.

There are two smoothing options, Black and White or Custom Color Smoothing. MAGic starts with Black and White Smoothing on.

Black and White Smoothing refines the background color and the pixel width of these objects for improved smoothing. Black text is the most common so the default text color is Black. White is the default secondary color. You can use the Hot Key ALT+CTRL+SHIFT+S to toggle Black and White Smoothing on or off.

The Custom Color Smoothing option allows users to set one secondary color to be smoothed instead of white. This is particularly useful when text is displayed in a color other than black, such as on web pages, which often display linked text in blue.

Click the Texture Menu or right-click on the Smoothing button to select the type of smoothing you would like to use. By default “Black and White Smoothing” is on (checked). When MAGic is magnified, the Custom

Custom Smoothing

Color Selector

The Custom Smoothing Color Selector is used to choose which alternative color you want MAGic to smooth. This option is unavailable (dimmed) unless magnification is on.

Click “Custom Smoothing Color Selector” on the Texture menu or use CTRL+SHIFT+X to activate the Color Selector Tool you will use to select a background color on your desktop.

When the selector tool appears, click on the alternative color you wish MAGic to smooth. You will notice that any white text in view is no longer smoothed.

Smoothing Delay

During rapid movement of magnified views, for example, when several activities are taking place at one time, Smoothing may cause the screen to flutter as it re-smoothes screen objects with each activity. Smoothing Delay allows these activities to

screen flutter.

The amount of delay determines how long Smoothing is postponed until screen activity ends. Click “Smoothing Delay” on the Texture menu to open the option dialog where you can set the delay duration.

Texture Menu or Color Button Options



Color Options include Inverse (colors reversed on screen) and Masking (certain color combinations are replaced with new color combinations that you select).

When you first click the Colors button during magnification, the default setting is reversed (inverse) screen colors. Right-click the Colors button to choose other color options and to access the Masking feature.

Note: These options are not available when system is set for 256 colors or more.

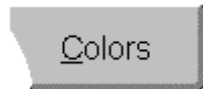
Inverse Screen The Inverse Screen task allows MAGic colors to switch from

when the Colors control button is clicked.

Note: Inverse screen color can also work when Level 1 (no magnification) is selected.

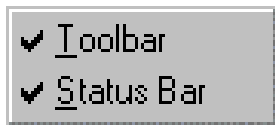
Enable Color Masking

When viewing magnified screens, there may be one or more colors that glare when viewed on your screen. When this happens, you have the option of customizing your screen colors. You can use Color Masking to change the offending colors to make a more pleasing presentation. Click “Enable Color Masking” on the Texture menu to turn on colors you have masked whenever you click the Colors button.



use Color Masking to replace any colors on your magnified screen with a color that better suits your visual preferences. After masking the colors you want, check “Enable Color Masking” on the Texture menu, and then click the Colors control button on whenever you want to mask colors in the MAGicView you are using.

View Menu



The View menu is used to arrange the appearance of the MAGic user interface according to your preference.

MAGic provides two features that you can choose to display, or not display, on your MAGic user interface: the Toolbar and the Status Bar.

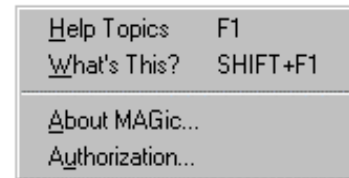
quick single-click access to various tasks.

Status Bar

Check “Status Bar” on the View menu to display or hide the Status Bar on the MAGic user interface. The Status Bar presents help and other informational messages when the mouse pointer travels over certain controls on the MAGic user interface.

Help Menu

Use the Help menu to get access to the Help System.



Help Topics

Select this menu item to access the help topics on each MAGic feature and function. You can

and question mark. You can use this pointer to click objects on the MAGic user interface, such as buttons, menus, or windows, and a help topic for that item appears.

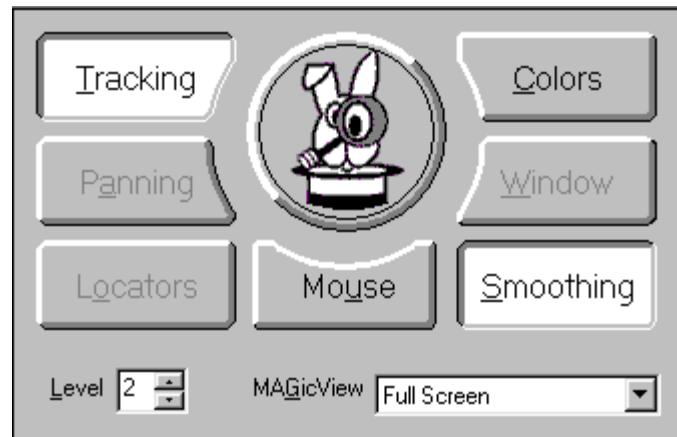
About MAGic

Select “About MAGic” to see copyright and version information for MAGic.

Authorization

The “Authorization” command displays your MAGic maintenance information, operating system requirements, and your MAGic serial number.

The center portion of the MAGic user interface includes both toggle buttons and other control elements. Command buttons turn MAGic features on and off with a single mouse-button click.



The MAGic user interface control group includes the following elements:

Magnification Button



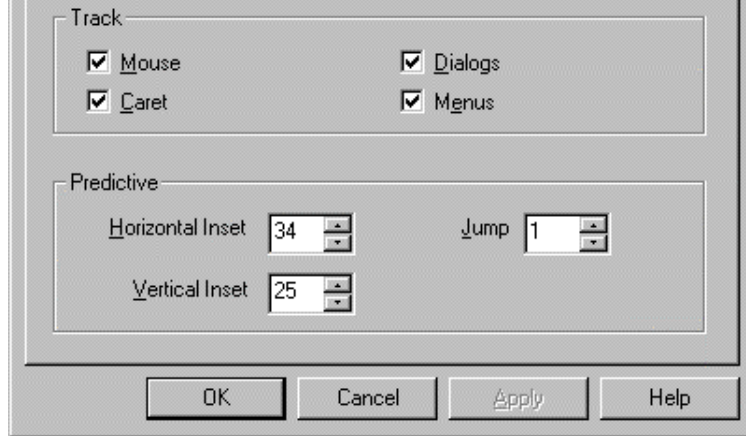
The Magnification is used to actually start running MAGic. Click on the round

The entire unmagnified screen is called the RealView. When magnification is on, the magnified viewing area, called the MAGicView, appears. Different types of MAGicViews are available for your selection through the MAGicView control.

The first time you turn MAGic on after installation, the Magnification level is set at 2x. When magnification is on, the MAGicView opens with the settings you selected.

Right-click the Magnification button to access the Preferences menu for MAGic tasks.

You can also quickly switch to Full Screen magnification by using the ALT+CTRL+F.

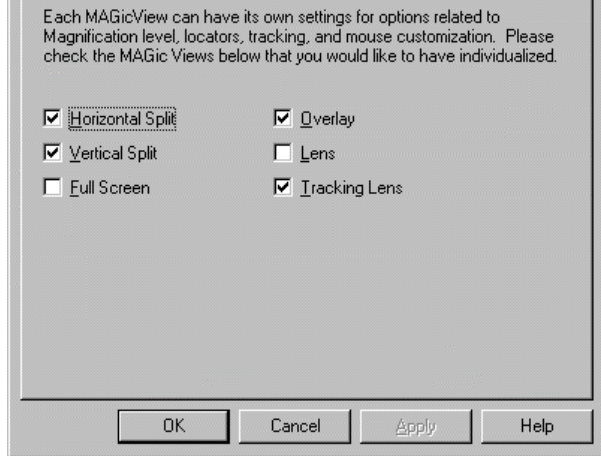


Preferences menu and the Magnification shortcut menu are divided into three sections. The top group of tasks forms the tabbed pages of

the Preferences dialog box. Clicking any of these tabs opens the Preferences dialog box for that corresponding task. For example, clicking “Tracking” or pressing T (when the Preferences menu is open) opens the Preferences dialog box with the Tracking page displayed.

Use the mouse pointer to access the various controls on a page, or press TAB to sequentially move from one control to another.

When you have made all of your changes, click OK or press ENTER to return to the MAGic user interface.



View settings such as magnification level, locator styles, tracking options, and mouse configurations can be unique for each MAGicView.

To create separate settings for any or all

MAGicViews, follow these steps:

Click “Separate MAGicViews” on the Preferences menu of the MAGic user interface.

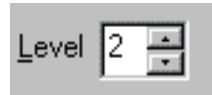
From the “Separate Views” page, click the box next to the view, or views, for which you want to create individual settings.

Once a MAGicView has been selected as a separate view, you can then make option changes while that view is active, then save the changes when you are finished.

Notice that the letters **SEP** appear on the Status Bar whenever a separate MAGicView is active.

these settings will be in effect whenever the Locators feature is on. However, you can turn Locators off for the Horizontal Split View anytime you wish.

Level Spin Box



Level displays the amount of enlargement currently being used during magnification.

For example, a 2 means that the MAGicView is enlarged 2 times the RealView size when magnification is turned on. Use the arrows on the spin box to choose a different magnification level from 2x to 20x.

A special magnification level, 1x, provides no magnification. When you choose Level 1, MAGic presents a RealView screen even when the Magnification button is clicked -- no magnification.

This option allows you to take advantage of color options, such as inverse screen color, masking and custom RealMouse sizes, colors and styles, when you do not want your screen magnified. At Level 1, the Tracking, Panning, Locators, Smoothing, and Window

following methods:

Click the UP ARROW of the spin box to increase magnification, or the DOWN ARROW to decrease magnification.

Or you can use these keystrokes:

Raise Magnification ALT+CTRL+RIGHT ARROW

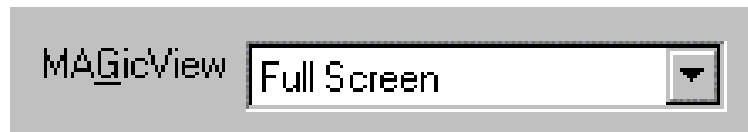
Lower Magnification ALT+CTRL+LEFT ARROW

Changes occur immediately when Magnification is on or when you turn magnification on.

You can also use the shortcut key combination, ALT+L, and then use the arrow keys to raise or lower the magnification level.

MAGicView Combo Box

MAGicView displays the name of the view type you will see when Magnification is turned on.



Click the arrow in the combo box to

screen.
You can also use ALT+CTRL+V to cycle through the views. Or you can also use the shortcut key combination, ALT + G, then press the arrow keys on the combo box to cycle through the various MAGicView options.

The next time you turn magnification on, the MAGicView you selected will appear. If you already have magnification turned on, the change will take place immediately.

Each MAGicView is designed to offer you a unique view of your screen, each providing slightly different viewing characteristics. You may prefer to use only one MAGicView style for your work or employ different styles for different jobs. Here is a brief overview of each view:

Full Screen

The Full Screen view creates a magnified view of the entire desktop or application – the entire screen is magnified. This is an excellent view to use when you wish to browse the screen to

Full Screen.

The hotkey is ALT+CTRL+F.

Note: When Full Screen is selected and the magnification level is set to 2 or higher, the RealMouse option on the Mouse button shortcut menu is unavailable.

Horizontal Split

The Horizontal Split view opens a magnified window horizontally across the top of your screen, while leaving the unmagnified desktop as a reference along the bottom of your screen. This is a handy working screen that is helpful when you want an overall view of the desktop but need a magnified view as well. The amount of viewing area dedicated to the MAGicView and the location of the view, i.e., top or bottom, can be adjusted using the Window Tool.

Split View, this option gives you an overall view of the desktop and a magnified view as well. The amount of area dedicated to the MAGicView and the location, either right or left, can be adjusted using the Window Tool

Overlay

One of the most versatile views, Overlay creates a magnified window on the desktop (shown here in the upper right-hand corner) while leaving the remaining desktop unmagnified. Here again, the unmagnified desktop becomes the reference screen, while the Overlay view permits closer examination of screen details as needed. The size of the Overlay view can be adjusted using the Window Tool.

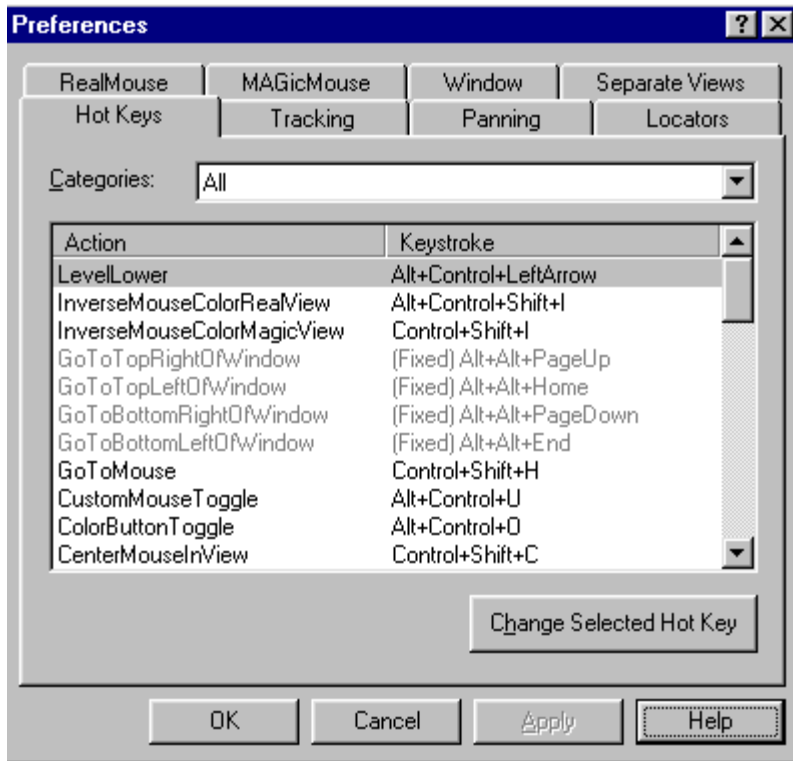
Lens

Like the Overlay view, the Lens view opens a small rectangular window, while leaving the

viewing the desktop, the overall desktop view and the magnified “lens” that travels along with your mouse movements. The size of the Lens view can be adjusted using the Window Tool

Tracking Lens

While the LensView can be compared to using a magnifying glass over the mouse, the Tracking Lens is best suited for keyboard use. As one tabs through menus and dialogs, the tracking lens sizes around and magnifies only the focus item such as a button, menu listing, edit field, etc. This is an excellent tool for focusing on the key element or critical piece of information on your screen. Once you move the mouse, the Tracking Lens behaves in a similar fashion to the Lens View.



To view or change MAGIC Hot Keys, click “Hot Keys” on the Preferences menu.

This page lists all the MAGIC Hot Key Actions and their corresponding Keystrokes.

The Categories list box allows you

to look at smaller groups of keystrokes to provide a shorter search time.

Note: A handy reference card is included in your MAGIC package as a ready reference guide to a few of the more widely used Hot Keys. A full listing of the factory default Hot Keys is included under MAGIC Help Topics by pressing F1 anytime the MAGIC user interface is active.

You can search down the list of Hot Keys by using the arrow keys.

Unassigned Actions

A number of Hot Key Actions have “None” listed as their Keystroke value. This means that this MAGic Action has no assigned Keystrokes. This allows you to choose your own set of Keystrokes to initiate the Action. See “Assigning “None” for details.

Fixed Keystrokes

Most Hot Keys can be changed to fit your particular requirements; however, some Hot Keys are fixed and cannot be changed. These fixed keystrokes are shown in gray in the dialog box. These keystrokes are used to alternate between ALT and SHIFT when the Manual Panning Key is selected. See “Manual Panning” for more information about these keys.

Explorer, Excel, or Windows itself.

Internet Explorer 5.0

Focus to First Field

CTRL+INSERT+HOME - Moves cursor to first form field in an Internet window, such as when you want to order or subscribe to something on the World Wide Web. This moves past all of the advertisements, links to other sites, and other objects that clutter many e-commerce sites.

Reformat Document

INSERT+F5 - This command removes most graphics and formatting, and then converts the links on a

Select a Link

that allows MAGic users to easily locate a specific link or just see the list of what's available on that site.

INSERT+F7 - Select a link opens a Links List dialog box with a scroll bar down the right and a list view on the left showing all links on a website. This option provides advantages over navigation and searching links on a page. In Internet Explorer 5.0 particularly, not only will this keystroke bring up a list of all the links on a page, but you have the options to actually activate the link or Go to the Link

Select a Frame

unvisited links only.
INSERT+F9 - Many web sites use frames to isolate different parts of the page. Select a Frame presents a list of frames that are contained on a page in a dialog box similar to Links List. You just need to scroll down the list using arrow keys and press ENTER when you are on the frame you want to move to.

Microsoft Excel

Verbosity Dialog

INSERT+V - This command opens a list of verbosity settings in a dialog. Among these settings are row and

Lists all of the cells in the visible window that have an attached comment. This allows you to quickly locate any visible cells that may provide important information about the spreadsheet.

List Column

CTRL+SHIFT+C - Lists the cells in the current column that contain data. This allows you to set focus on the selected cell.

List Row

CTRL+SHIFT+R - Lists the cells in the current row that contain data. This allows you to set focus on the selected cell.

List Visible Cells With Data

CTRL+SHIFT+D - Lists only the cells with data

screen, skipping blank cells.

Microsoft Word

List Comments

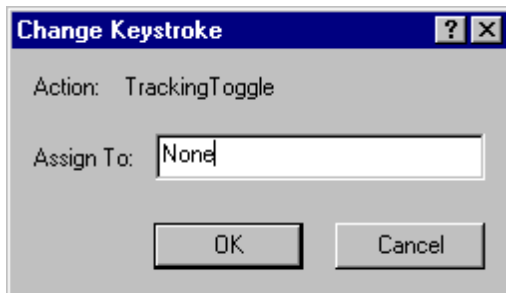
CTRL+SHIFT+' - Provides a list of comments that have been entered into the Word Document using the Insert menu command Comment. Usually this is used by someone reviewing someone else work. It is a way for the editor to indicate what they were thinking when they recommend a change to the text.

List Hyperlinks

INSERT+F8 Provides a list of hyperlinks for the entire document.

The system tray icons are changed to textual format. After the user selects the desired application from the list, you can then tab to the following option buttons; left, right or double-clicking. The benefit of this feature is that the small icons can be difficult to interpret, which a text based list is clear and avoids the need to click on the icon.

Start MAGic Task List



INSERT+F10 - Opens a

d
i
a
l
o
g

Changing Hot Keys

To change one of the Hot Keys, follow these steps:

From the Preferences menu, click Hot Keys. The Hot Keys page appears.

Focus on the Action or the Keystroke you wish to change by highlighting either.

Click “Change Selected Hot Key.” You can also right-click the Action, then click the “Change” box when it appears. The Change Keystroke dialog box appears.

To change Keystroke Dialog, highlight the Hot Key, then press F2 or press ALT+C.

Type the new set of keystrokes for the selected Action in the Assign To edit field.

Valid Hot Keys can use any of the following formats:
CTRL+X, CTRL+SHIFT+X, ALT+CTRL+X, and
ALT+CTRL+SHIFT+X.

dimmed and designated as "Fixed" cannot be changed.

Click OK when you are finished.

You can also unassign an action (the keystrokes equal the value "None"). See "Assigning "None" for details.

Assigning "None" to an Action

You can assign no keystroke to an action (the value "None"). There are a limited number of keystroke combinations available for assignment to MAGic tasks. Therefore, you may want to free up a particular Keystroke that is assigned to an Action that you rarely use, and assign that Keystroke to a more frequently used Action. You can also use this option when there is a conflict with a MAGic Hot Key and a Windows shortcut key in your favorite application.

To assign None to an action, follow these steps:

From the Preferences menu, click "Hot Keys." The Hot Keys page appears.

Highlight the Action you want changed, and then click "Change Selected Hot Keys."

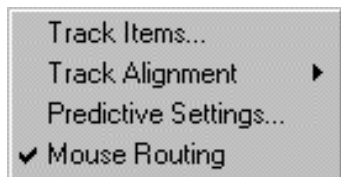
Tracking Objects



To toggle tracking on or off, click the Tracking button on the MAGic user interface. Or you can use the keystroke CTRL+SHIFT+T.

Tracking enables MAGic to focus automatically on an active object anywhere on the MAGicView. Notice as you move your mouse pointer toward the edges of the MAGicView, the MAGicView follows (tracks to) the mouse. When you first start MAGic, Tracking is turned on by default and the MAGicView follows the mouse pointer.

Setting Tracking Preferences



To access Tracking preferences, right-click the Tracking button to open the Tracking shortcut menu.

Tracking options include Track Items,

same options, but with all options presented on a single Preferences page.

Track Items

Click “Track Items” in the Tracking shortcut menu to open the Track Items dialog box where you can view or change the objects you want tracked.

When tracking multiple objects, MAGic tracks the last object that has moved outside of the tracking frame.

To view or change a Track Item, follow these steps:

Right-click the Tracking button.

When the Tracking shortcut menu appears, click “Track Items.” The Track Items dialog box appears.

Choose any of the Track Items listed, and then click its corresponding check box to allow tracking for that item. (A check means that tracking is allowed for that item.)

When you first start MAGic, Tracking is turned on and all Track Items are checked.

These unassigned Actions are listed with “None” as their keystroke. This allows you to create keystrokes for these actions that will not conflict with Windows shortcut keys in your favorite applications.

Caret

Use the Caret option to track text cursor movement. The caret is used as the insertion point for text processing applications. It appears as a blinking vertical bar. The default setting is checked.

Menus

Use the Menus option to track active menus, such as the open Preferences menu located on the Menu Bar. The default setting is checked.

Dialogs

The Dialog option tracks the active dialog. A dialog (dialog box) is any open window that contains control elements, such

Each Track Alignment mode sets the tracking relationship between the position of the mouse pointer and the MAGicView in which it appears.

To choose a Track Alignment mode, follow these steps:

Right-click the Tracking button. The Tracking shortcut menu appears.

Click “Track Alignment.” The list of alignment modes appears.

Click one of the modes listed below:

Edge

Edge alignment tracking moves the MAGicView only when the mouse pointer reaches the edge of the MAGicView. This allows you to move the mouse pointer within the MAGicView without moving the MAGicView. This keystroke has a hotkey CTRL+SHIFT+E.

CTRL+SHIFT+PERIOD (.).

Continuous

Continuous alignment tracking moves the MAGicView as the mouse pointer moves using the position of the pointer to show the position of the MAGicView. In Continuous alignment, the position of the pointer relative to the MAGicView is the same as the position of the MAGicView relative to the RealView. For example, if the mouse pointer in the MAGicView is to the left of center, then the MAGicView is an area left of center on the RealView. The keystroke is CTRL+SHIFT+COMMA (,).

Predictive

Predictive alignment tracking moves the MAGicView whenever the mouse pointer moves outside of the outer frame. The MAGicView is then repositioned so that pointer is now within the

Predictive alignment is the default Tracking Alignment mode.

Edge alignment is a special case of the Predictive alignment mode, where the inner and outer frames are equal to the size of the open MAGicView.

Center alignment is another special case of the Predictive alignment mode, where the inner and outer frames are equal to 1 pixel by 1 pixel in size at the center of the screen.

Predictive Settings

Click “Predictive Settings” on the Tracking shortcut menu to open the Predictive Tracking dialog box. Predictive tracking shifts the MAGicView anytime the mouse pointer approaches the edge of the horizontal or vertical frame (boundary) of the MAGicView in order to keep the pointer in view.

To view or change the Predictive Tracking settings, follow these steps:

Right-click the Tracking button.

Choose one of the settings in the following spin boxes:

**Horizontal and
Vertical Insets**

These settings determine how close (in pixels) the mouse pointer can get to the horizontal or vertical edge (frame) of the MAGicView before the view shifts.

Use the arrows of the Inset spin boxes to raise or lower the inset number. The lower the inset number, the closer the pointer is allowed to get to the frame before the MAGicView shifts.

The higher the inset number, the further away the pointer is allowed from the frame before the MAGicView shifts.

Jump

Use the Jump settings to determine how much of a shift (in pixels) the MAGicView makes when the mouse pointer reaches either the Horizontal or Vertical Inset settings.

Mouse Routing is helpful whenever other objects on the screen have focus and the mouse pointer is not visible in the MAGicView. Any movement of the mouse brings the pointer into the center of the screen.

To toggle Mouse Routing on or off, do the following:

Right-click the Tracking button.

When the Tracking shortcut menu appears, click “Mouse Routing” to toggle this feature on or off.

A check mark appears when Mouse Routing is on. Leave this option unchecked to cause the MAGicView to shift.

Centering the Mouse Pointer

There are other ways to track your mouse pointer. When the MAGicView is open, move the mouse pointer to the center of the view by using Center Mouse Hot Key CTRL+SHIFT+C.

RealView Mouse and CTRL+SHIFT+TT to locate
MAGicView Mouse.

When you use these keystrokes black crosshair lines
appear on the screen. The mouse is located where
these horizontal and vertical lines cross.

Panning an Application



When magnification is on, you can click the Panning button to explore application windows without changing the contents of a screen. The MAGic user interface minimizes and panning begins.

There are two types of panning you can use with MAGic: Manual and Full-Screen.

Manual Panning

During magnification, whenever the Manual Panning navigational keys are activated, the MAGicView is locked in place while allowing you to move around the magnified area (MAGicView) of the screen. It is like passing a magnifying glass (MAGicView) over the unmagnified screen (RealView) in the direction of the navigational keys.

Move to bottom right	ALT+PAGE DOWN
Move to top left	ALT+HOME
Move to bottom left	ALT+END
Move to Mouse	CTRL+SHIFT+H
Scroll Down	ALT+DOWN ARROW
Scroll Left	ALT+LEFT ARROW
Scroll Right	ALT+RIGHT ARROW
Scroll Up	ALT+UP ARROW

The Manual Panning Hot Key

When you are magnifying some Windows application screens, the Manual Panning navigational keys may conflict with the application's shortcut keys. Generally, the use of the ALT key causes the conflict. When this occurs, you can use the Manual Panning Hot Key to change the Manual Panning navigational keys from ALT-based keystrokes to SHIFT-based keystrokes. Use ALT+CTRL+SHIFT+M.

Full-Screen Panning

Full-Screen Panning begins to visually browse the desktop (screen) or window whenever you click the Panning button.

Panning also starts whenever you use one of the following Hot Keys:

ACTION	KEYSTROKE
Pan From Top of Screen	ALT+CTRL+SHIFT+P
Pan From Top of Window	CTRL+SHIFT+W

With an application running, start Panning by clicking the Panning button on. The MAGic user interface minimizes and panning begins. During panning, you can press any arrow key to change the direction of panning — panning starts in that direction. Panning continues until you stop it (press ESC).

Speed can be increased or decreased by pressing the PLUS (+) or MINUS (-) keys during the panning operation.

To demonstrate this invaluable MAGic feature, you can use the following Windows Notepad application to pan a .TXT file:

Note: For this example, we have used the Full Screen view, set magnification at level 2, turned Colors off, turned Mouse tracking on, turned Panning off, checked “Window” for the Panning Area setting, and used the Windows Standard mouse (Mouse button off). You can change these settings; however, the results may vary slightly.

1. With MAGic running and magnification turned on, click “Programs” from the Start menu, and then click “Accessories” on the Programs submenu.
2. Click “Notepad” (Microsoft Notepad[©]) from the Accessories list.
3. With Notepad active, click “Open” on the File menu.
4. Locate and open (double-click) the README.TXT file in your MAGic directory.

6. Click the Panning button to start panning.
7. The MAGic user interface is minimized and MAGic begins to pan the README.TXT file.

By default, panning begins at the top left-hand side of the document window and slowly pans across from left to right. When the right margin of the document is reached, the view increments down one line, quickly returns to the left margin, and begins to pan the next line.

Other Navigational Keys

If panning is too fast or too slow, or you want to temporarily stop and restart, you can use the following navigational keys to control the panning operation:

ACTION	NAVIGATIONAL KEYS
Exit Panning	ESC
Pause / Resume	SPACE

Resume normal speed after Quick speed (Q)	W
Faster	F or NUM PAD PLUS (+)
Slower	S or NUM PAD MINUS (-)

Note: Once the entire MAGicView has been panned, Panning turns off and the MAGic user interface is restored.

After you have mastered the navigational controls for Panning, you may want to change the Panning startup defaults. For example, you can change the startup speed and direction settings.

Changing Panning Startup Defaults

Delay...

same options, but with all options presented on a single Preferences page.

Use the following default settings to control the way Panning works when a MAGicView opens:

Area This Panning setting controls the area in which panning will take place. You can use the Area option to choose panning for the desktop (screen) or for an active window.

To change the Area settings, follow these steps:

1. Right-click the Panning button.
2. When the Panning shortcut menu appears, click "Area."
3. The list of Areas appears as a submenu.
4. Click one of the Areas listed below:

Note: When using Panning Hot Keys, panning must be stopped (press ESC) before you can switch between panning areas (the Desktop or a Window).

Direction

To choose the starting direction of a full-screen panning, follow these steps:

1. Right-click the Panning button.
2. When the Panning shortcut menu appears, click “Direction.”
3. The list of Direction options appears as a submenu.
4. Click one of the Direction options. A bullet mark appears next to your selection.

The following options are available:

Down Sets the direction from top to bottom.

Up Sets the direction from bottom to top.

Speed

This Panning setting controls the speed of panning. There are two settings, one for horizontal panning and one for vertical panning.

To choose the starting speed of a full-screen panning, follow these steps:

1. Right-click the Panning button.
2. When the Panning shortcut menu appears, click “Speed.”
3. The Panning Speed dialog box appears.

Choose one of the settings in the available spin boxes using the following methods:

frame display time.

The following is a guideline for both the Horizontal and the Vertical Speed settings:

Slow panning: 1-32

Medium panning: 33-66

Fast panning: 67-99

You can use these guidelines to make an approximate setting, and then refine the setting after viewing the panning speed of a document.

The Horizontal default value is 4 pixels per frame display time.

The Vertical default value is 2 pixels per frame display time.

Jump

The Jump setting controls the amount of shift (horizontal or vertical) panning makes after it reaches the border of the viewing area and before it begins a new pass. For example, when the MAGicView reaches

panning top-to-bottom or bottom-to-top, the jump setting controls the incremental horizontal movement.

To view or change the Panning Jump settings of a full-screen panning, follow these steps:

1. Right-click the Panning button.
2. When the Panning shortcut menu appears, click “Jump.” The Panning Jump dialog box appears.

Choose one of the settings in the available spin boxes using the following methods:

Horizontal

The Horizontal Jump setting is the offset in pixels (1-99) between vertical panning passes. This value is used when panning top-to-bottom and bottom-to-top. The Horizontal default value is 32 pixels.

Vertical

The Vertical Jump setting is the offset in pixels (1-99) between horizontal panning passes. This

The Delay setting controls the amount of delay between panning passes. For example, when the magnified view (MAGicView) reaches the right margin an on-screen document, the view increments down one line, then returns to the left margin of the document, and begins the next pass. Delay settings control the amount of time that Panning pauses after the view increments down one line at the right margin (frame of the view). This is the Stop setting.

The Start setting controls the amount of delay before Panning begins the next pass after returning to the left margin (frame of the view).

To choose the starting speed for Full-Screen Panning, follow these steps:

1. Right-click the Panning button.
2. When the Panning shortcut menu appears, click “Delay.” The Panning Delay dialog box appears.
3. Choose one of the settings in the available spin boxes using the following methods:

Stop

The Stop option sets a delay in milliseconds at the end of each panning pass. The Stop default value is 1500 ms.



When you have a Split or Overlay view, the Locators feature provides a visual reference of how much RealView is magnified in MAGicView. The Locator also provides a reference to where the MAGicView is in relationship to your entire computer screen.

To have the RealView pane display a rectangle that shows the area of the magnified view, right-click the Locators button. You can then select the body and border color and style you want.

Preferences

To view or change the Locators preference settings in RealView, follow these steps:

1. Right-click the Locators button. The Locators shortcut menu appears.
2. Click "Preferences."
3. The Locators Preferences dialog box appears.

Body

Transparent

The locator is transparent except for the border. This is optimal if you need to see what is in the RealView portion of the screen. Click the radio button to turn this option on.

Solid

The locator is a solid color (selected from the spin box). Click the radio button to turn this option on.

Inverse

The locator is the inverse of the desktop colors. Click the radio button to turn this option on. The color spin box is not active when this option is checked.

Smart

This locator option appears as a solid locator body except when the locator passes over an object of the same color. Only that

color you wish. This control is inactive when the Inverse option is checked.

Choose one of the settings in the Border control group and make changes as follows:

Border

None

No border appears on the locator. Click the radio button to turn this option on. This control is inactive when the locator body choice is Transparent.

Solid

The locator border is a solid color (selected from the spin box). Click the radio button to turn this option on.

Inverse

The locator Border is the inverse of the desktop colors. Click the radio button to turn this option on.

border passes over an object of the same color. The border then inverts color.

Color spin box

Click the arrow buttons on the Color spin box, and choose the color you wish.

When you have made your selections, press ENTER or click OK.



MAGic offers you several mouse pointer options to fit your work style.

Once you have customized your mouse pointers, you can click the Mouse button on the MAGic user interface to toggle between the Windows Standard settings and your Custom settings. To toggle the mouse use ALT+CTRL+U.

When you first run MAGic and click the Mouse button, the default setting produces a red combined crosshairs mouse pointer in magnification mode. See “Change Custom Mouse Type” for details about changing this default.

Right-click the Mouse button, and then click either “RealMouse” or “MAGicMouse” depending on which mouse configuration you wish to set up.

Note: When magnification level is set to 1 (no magnification), the MAGicView option on the Mouse button shortcut menu is unavailable (dimmed). The RealMouse option is

explain the configuration settings for MAGicMouse, both are configured in the same way.

Clicking “RealMouse” or “MAGicMouse” from the Preferences menu offers the same options as the Mouse shortcut menu but with all options presented on a single Preferences page.

MAGicMouse and RealMouse

Notice that when the selected MAGicView is Horizontal Split, Vertical Split, Overlay, Lens, or Tracking Lens, there are two mouse pointers present on your screen.

Note: In Lens view most RealMice, other than crosshairs or mice set to very high magnification will not be visible because they are covered by the actual MAGic LensView itself.

The mouse pointer you see in the MAGicView, called the MAGicMouse, retains the same style and color as the mouse pointer in the RealView, called the

MAGicMouse is 2 times the size of the RealMouse.
These are the default settings for your mouse.
However, MAGic offers you a wide range of mouse
pointer styles, colors, and sizes you can use to
customize both the RealMouse and the MAGicMouse.

Choosing a Mouse Style

To view or change the Mouse Style settings, follow these steps:

1. Right-click the Mouse button.
2. When the Mouse shortcut menu appears, click "MAGicMouse."

Although we will be explaining only the configuration of the MAGicMouse here, both the MAGicMouse and RealMouse are configured in the same way.

When the MAGicMouse submenu appears, click one of the available options. A bullet mark appears next to the selected item.

The following styles are available:



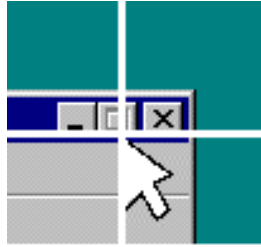
be true whether or not you click the Mouse button.

While the style will always be the same, you can change the magnification level of the Windows Standard mouse pointer. See “Mouse Configuration Decisions” for details about changing these settings.

Custom

Choose this option to create a custom mouse pointer that will become active whenever you toggle the Mouse button on. The initial default mouse type is crosshairs.

You can change the magnification level, color, and mouse type of your Custom mouse..



are combined into one mouse pointer. For example, if you had created a white Windows Standard Mouse with a magnification level of 4x, this would appear on your screen when the Windows Standard Mouse was checked. If you had created a Custom mouse using a white colored Crosshair style with a magnification level of 3x, this would appear on your screen when Custom Mouse was checked. If you then checked the Combined Mouse option, a combination of both your Windows Standard Mouse and Custom Mouse would appear on the screen.

Standard,

Custom, or Combined), you are ready to choose the magnification level, color, and mouse type (custom or combined only).

Magnification

To change mouse magnification, follow these steps:

1. Follow the steps to choose either Windows Standard, Custom, or Combined mouse style.
2. Continue by right-clicking the Mouse button again. When the Mouse shortcut menu appears, click MAGicMouse, and then click “Magnification.” The MAGicMouse Magnification dialog box appears.

1. You can either check the “Use MAGicView magnification level” option or select a new magnification level from the “Level spin box.

When the “Use MAGicView magnification level” option is checked, the mouse magnification level is

If this option is unchecked you can use the arrow buttons in the Level spin box to choose a mouse magnification level from 1 to 10. The default is 2.

Note: Mouse magnification is limited to level 10 to ensure that the pointer does not obscure objects on the MAGicView.

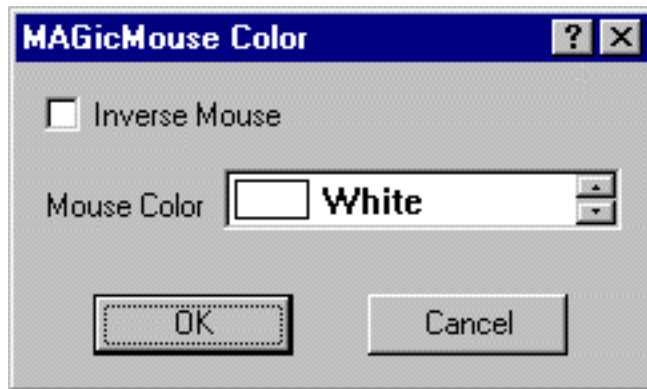
When you have made your choice, press ENTER or click OK.

ACTION	KEYSTROKE
Raise MAGicMouse Magnification	CTRL+SHIFT+UP ARROW
Lower MAGicMouse Magnification	CTRL+SHIFT+DOWN ARROW
Raise RealMouse Magnification	ALT+CTRL+SHIFT+UP ARROW
Lower RealMouse Magnification	ALT+CTRL+SHIFT+DOWN ARROW

Combined mouse style. Then continue with the following step.

Note: This option affects only Custom or Combined mouse types. If you selected the Windows Standard type mouse, color changes have no affect on this type mouse.

1. Right-click the Mouse button again. When the Mouse shortcut menu appears, click “MAGicMouse,” and then click “Color.” The MAGicMouse Color dialog box appears.



You can check “Inverse Mouse” to choose a mouse color that is opposite from the color shown in the “Mouse Color” spin box.

mouse pointer from the Mouse Color spin box.

ACTION	KEYSTROKE
Inverse Mouse Color MAGicView	CTRL+SHIFT+I
Inverse Mouse Color RealView	ALT+CTRL+SHIFT+I

1. Press ENTER, or click OK, when you have made your choice.

Change Custom Mouse Type

Note: These options only affect Custom and Combined mouse types. If you selected the Windows Standard mouse, mouse type changes have no affect on the mouse.

To view or change the Mouse Type settings, follow these steps:

1. Right-click the Mouse.

click one of the available options.

A bullet mark appears next to the selected item.

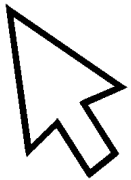
The following styles are available:

Hidden

This pointer selection makes the mouse pointer disappear from the view. This is a good option if you prefer to primarily use the keyboard.

Windows Standard

This is the standard mouse pointer style.





location of the mouse pointer. This is the default mouse type setting.

Cross



The Cross option is similar to the Crosshair, but the lines do not extend across the entire screen.

Circle



The Circle option uses two concentric circles as the mouse pointer. The center circle is the same color as selected in the Mouse Color option with a slightly larger circle around it, which takes the alternate color of whatever

Outlined Circle



The Outlined Circle option is similar to the Circle, but with an added outline around the outer circle in the same color selected in the Mouse Color option.

Circled Circle



The Circled Circle option gives a bull's eye appearance by adding a larger outer circle around the Outlined circle option described above. The outer circle is the same color as that selected in the Mouse Color option.

You can choose to have different mouse configurations for individual MAGicViews. See “Setting Up Separate MAGicViews” for more details.

Using Smoothing



Smoothing compensates for the loss of character definition, as screen objects get larger during magnification.

When you first start MAGic, by default the Black and White Smoothing button is on. Smoothing softens the edges of on-screen text fonts and graphics. To toggle Smoothing use CTRL+SHIFT+S.

MAGic provides two types of smoothing, Black and White and Custom.

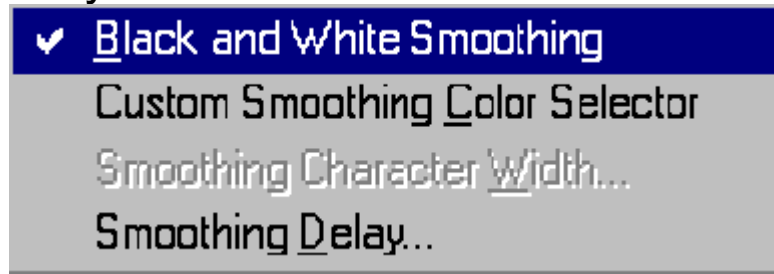
Black and White Smoothing

By default, Black and White Smoothing is on whenever MAGic is started; the Smoothing button on the MAGic user interface is pressed down. Notice that whenever

Custom Smoothing allows you to set an alternate color to smooth instead of White. When Custom Smoothing is on Status Bar displays the characters **CS**. Magnification and Smoothing must both be on before Custom Smoothing can be used.

To select Black and White Smoothing, follow these steps:

1. Turn Magnification on by clicking on the Magnification button (The Rabbit Button).
2. A check mark appears next to the Black and White option by default.



3. Click on Custom Smoothing Color Selector.
4. The Color Selector will appear. Using the Selector as a pointer, click on the color you want to have smoothed.

You can also toggle Custom Smoothing from the Texture menu or use ALT+CTRL+SHIFT+S. Remember Custom Smoothing does not take effect unless Magnification and Smoothing are both turned on.

Delay Smoothing

During rapid movement of magnified views, for example, when several activities are taking place at one time, Smoothing may cause the screen to flutter as it re-smoothes screen features. Smoothing Delay allows these activities to occur together, and then does one smoothing action when movement stops. The result is smoother movement, more rapid execution of actions, and less screen flutter. The amount of delay determines how long Smoothing is postponed until screen activity ends.

To set the amount of delay for Smoothing, follow these steps:

3. The current delay factor appears in the “Smoothing Delay” spin box.
4. To change the selection, click the arrows on the spin box.

The range of delay goes from 0 to 2000 Ms (milliseconds). The best setting is 200 or less. A Smoothing Delay of zero would trigger a smoothing operation with each activity on the screen.



You can customize the size, location, and borders of several MAGicViews using the MAGic Window Tool.

For example, if you wish to have a larger Overlay view than the default size used by MAGic, you can stretch and move the Overlay view with the Window Tool.

Note: The Window Tool cannot be used when Full Screen or Tracking Lens MAGicViews are active. The Window button is dimmed when the Window feature is not available.

Moving or Resizing MAGicViews

While in an Overlay, Lens, or Split MAGicView, click the Window button to access the Window Tool to move or resize the view. Or use CTRL+SHIFT+Z to resize the view.

Note: Magnification must be turned on before the Window button or Window Hot Keys are active. The Window button is dimmed when not available.

- magnification on.
2. Click the Window button on the user interface.
 3. The MAGic user interface is minimized and the Window Tool replaces the MAGicView.
 4. As you move your mouse pointer over the Overlay view, special “grips” appear indicating in which direction you can drag your mouse to move or resize the Overlay MAGicView.
 5. Use the bi-directional grip to move the Overlay and Split MAGicView to a different location on your RealView.

Horizontal Split views can only be moved to the top or bottom of your screen.

Vertical Split views can only be moved to the far left or far right of your screen.

Use the horizontal grip to resize the MAGicView in a horizontal direction, larger or smaller.

Use the diagonal grip to grab the corner of a MAGicView window and stretch or contract the window size. The diagonal grip is only available for Overlay and Lens views.

To use one of the grips, place the mouse pointer on the grip, click and hold the left mouse button, and drag in the direction of the grip's arrows. You can release the left mouse button, point to a new grip, then click and drag again as many times as you wish until the window is the size or in the location that you want.

When the desired size or location is achieved, release the left mouse button (drop) and click the right mouse button.

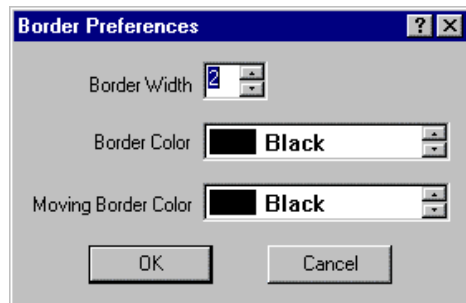
The MAGic user interface is restored to your screen.

You can adjust the size and border color of most MAGicViews by changing the Border preferences. To access Window settings, right-click the Window button to open the Border Preferences dialog box. Clicking “Window” on the Preferences menu offers the same options

Window settings include Border Width, Border Color, and Moving Border Color.

To view or change the Window border preferences, follow these steps:


1. Right-click the Window button. The Border Preferences dialog box appears.



2. The “Border Width” spin box displays the size of the current MAGicView’s border in pixels.

5. Click the “Moving Border Color” spin box arrows to choose a border color that appears whenever you resize a MAGicView.
6. Press ENTER or click OK to save your preferences settings.

Choosing Your Viewing Colors



When you click the Colors button, your screen can switch between the Windows color settings and “Custom” colors that you choose with MAGic’s Colors feature. You can also use the keystroke ALT+CTRL+O.

MAGic color options include Inverse and Masking.

Inverse

By default, MAGic uses the Windows color settings for both the RealView and MAGicViews. When you first use MAGic, the default Color option “Inverse Screen” is selected. When you click the Colors button during magnification, your screen color scheme switches from the preset Windows colors to the inverse of these colors. You can also select Inverse Screen from the Texture menu.

reversing.

If you have masked certain colors, your screen will use your masked color combinations during magnification whenever the Colors button is clicked on. You can also select “Enable Color Masking” from the Texture menu.

Note: The color changes you make affect both MAGicViews and the RealView at the same time.

You can also choose to have different color settings for individual MAGicViews.

See “Setting Up Separate MAGicViews” for more details.

Setting Up Color Preferences

Before you begin using the Colors feature, you may want to first set up the color preferences for both Windows and MAGic.

Setting up Color Preferences for Microsoft Windows

To choose from several available Windows color combinations, follow these steps:

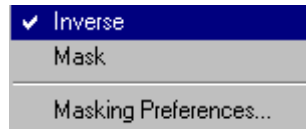
Start Menu	CTRL+ESC
Select Settings	S
Select Control Panel	C
Select Display	Press D repeatedly until you locate Display, then press ENTER.

1. Here you will find the available Windows color schemes under the “Appearance” tab.
2. Choose your preferences from the different styles in the “Schemes” drop-down list box.

Locate Scheme box	SHIFT+TAB
Choose a style	Use the arrow keys, then press ENTER.

Note: See your Windows documentation or Windows help topics for details about using this feature.

Setting Up MAGic Screen Settings



To set up the color options for MAGic, follow these steps:

1. Right-click the Colors button on the MAGic user interface.
2. The Colors shortcut menu appears.
3. The default is “Inverse” checked. Click “Inverse” or “Mask” to toggle these options on or off. A check mark next to the item indicates it is on and will apply when the Color Button is clicked.

Choosing Masking Preferences

If you checked Mask, you will then want to choose the colors you wish MAGic to mask.

To mask certain colors, follow these steps:

1. From the Colors shortcut menu, click “Masking Preferences.” The Masking Colors dialog box appears.
2. You can also select “Masking Preferences” on the Texture menu.
3. Continue to click “Next” until the range of colors you wish to change appears in the color window. Each Color is presented in varying shades, ranging from dark to light. Click “Back” to show a previous color.
4. You can use N and B to go to next color or back to the previous color.
5. Click “Mark.” The Choose Replacement Color dialog box appears.

7. Press ENTER or click OK to mark your selection.
8. When you return to the Masking Colors dialog box, you will notice that the Mark button has now been changed to Unmark. If you wish to cancel the color masking you just completed, click the Unmark button.

To reset all previously changed colors, click “Reset Colors.” Reset Colors acts like a cancel operation, but without closing the Masking Colors dialog box.

You can then continue through the pages of colors by pressing the Next button. At any point, you can press ENTER, or click OK to save your masking changes and end the process.

Note: When Magnification is off, Inverse Screen and Masking are not available. If you want to use inverse and masking options without magnification, you must select magnification Level 1 from the Level spin box.

This section provides information about a small but very important part of MAGic: the Authorization Key. An Authorization Key is simply a file with computer information originally located on your Authorization diskette that must be present on your hard disk when MAGic starts. The Authorization Key is crucial to MAGic working properly.

Note: If an Authorization Key is missing, an error message will appear and MAGic will not work.

When you install MAGic from the installation media that came with your MAGic package, the Authorization Key automatically loads onto your computer during the installation.

If you downloaded the current version of MAGic and installed the program from your hard disk, you may need to manually load the Authorization Key from the Authorization Diskette. See “Moving Authorization Key” for instructions on how to manually install the Authorization Key.

maintenance, or perhaps move MAGic to a different computer, you will need to move your Authorization Key.

Purchasers of a Single User License of the MAGic software package receive five Authorization Keys.

Backup Considerations

The Authorization Key cannot be backed up and restored like other system files. If you back up your hard disk onto diskettes or tape, we suggest that you move the Authorization Key back to your original Authorization Diskette before you perform any disk maintenance activities, such as reformatting. When you are finished, you can then move the Authorization Key back to your computer hard disk.

If you are replacing your hard disk, you must first move the Authorization Key from your hard disk to your Authorization diskette.

See “Moving the Authorization Key” for instructions.

Authorization Key.

You should move your Authorization Key from your hard disk to the original Authorization diskette before doing any defrag maintenance.

As an alternative, you can check the options on the defrag utility to see if you can configure the program to avoid hidden files. If this option is available, it should allow the defrag utility to run with the Authorization Key installed.

Moving the Authorization Key

The Authorization Key normally loads automatically onto your computer during the installation process; however, there are times when the Authorization Key, or part of the key, loads improperly. When this occurs, you can manually install/move the Authorization Key from the Authorization Diskette to your hard disk.

To move the Authorization Key to your hard disk, follow these steps:

from your installed MAGic default directory.

When the Authorization Management Interface dialog box appears, select the “Install authorization” radio button from the list in the “Available Commands” box.

The “Authorization disk Location” field should indicate where you have inserted the Authorization Diskette. In this case, you are installing (moving) an Authorization Key from the Authorization Diskette to the MAGic directory on your hard disk.

Click Execute to install the Authorization Key.

Note: If you encounter an error message indicating that you do not have any more Authorization Keys to copy, or that there is already an Authorization Key on the hard disk, see “Determining the Number of Keys” or “Getting New Keys”.

the appropriate disk drive, and then open the Start menu.

Type **A:** \HJAUTH in the “Open” field of the Run dialog, and then press ENTER.

Note: To check for the number of Authorization Keys on the hard disk, follow the same steps above, except that you would type **C:** \MAGIC62\HJAUTH, where **C:** is the destination of your hard disk and **MAGIC** is your default installation directory.

When the Authorization Management Interface dialog appears, enter the letter of the disk drive (diskette, CD-ROM, or hard disk) in the “Authorization disk location” field.

Click the “Get authorization count” radio button to get the install count. Click the Execute button to display the number of Authorization Keys.

authorization statistics such as Serial Number, Current Version, Reset Usage Count, Expire Date, Version Type, and other valuable details.

Getting New Keys

There, may be situations where an Authorization Key is accidentally deleted or corrupted and a replacement is needed.

If you should lose one of these keys, Henter-Joyce Technical Support can add one or more keys to your Authorization media or send you an Authorization Reset Code to update your Authorization media. Contact Henter-Joyce Technical Support by telephone or e-mail to request a new key. This information can be found on the inside cover of this book.

Make sure you explain the reason you need a new key and include your name, address, and serial number in the e-mail. We will e-mail you the Authorization Reset

Authorization Reset Code

If it becomes necessary for Henter-Joyce Technical Support to send you an Authorization Reset Code, you will need to enter the SQCPS Reset code as you install your Authorization Key.

When you receive the Authorization Reset Code from HJ, follow these instructions:

Go to an MS-DOS prompt on your system, and then change to the MAGIC directory.

Type **HJAUTH.EXE** at the DOS prompt to run the program. For example, if your MAGic default installation directory was “MAGic62”, you would type the following at the MS-DOS prompt:

```
C:\MAGIC62\HJAUTH.EXE
```

When the Authorization Management Interface dialog appears, locate your MAGic Installation media and insert it into the appropriate disk drive. Make sure the

Type the SQCPS reset code (sent from HJ) with no spaces in the field.

Click the Execute button, or press ENTER.

From the Available Commands group, click the “Install authorization” radio button.

Click the Execute button, or press ENTER, to complete the SQCPS reset procedure.

You should now be able to move an Authorization Key to your hard disk. See “Moving the Authorization Key” for details.

Henter-Joyce, Inc., (HJ), provides you with the software program recorded on the media (diskette[s] and CD) in the package accompanying this agreement (the program) and licenses you to use this program. The license granted to you is nonexclusive and does not grant ownership rights. As a licensed user (Licensee), you should understand that you do not own the program and the instructional materials that accompany the program; you are only licensed to use the program and instructional materials in accordance with the terms stated in this agreement.

When you open the sealed package of media and become a licensed user, you assume sole responsibility for determining the appropriateness of the program for achieving your intended results. You further assume sole responsibility for the installation, use, and results obtained from the program, and you assume complete responsibility for the selection, installation, use, and placement of hardware with which you use the program.

1. ACCEPTANCE OF THE LICENSE AGREEMENT. The terms and conditions of the Henter-Joyce, Inc., Software License Agreement explains the legal relationship between Henter-Joyce, Inc., and the individual and institutional purchasers of Henter-Joyce software. Henter-Joyce software diskettes are delivered to

and exclusive statement of the agreement between you and Henter-Joyce, Inc., and that this agreement supersedes any prior communications, understandings, representations, proposals, or agreements, (whether oral or written) that may exist between you and Henter-Joyce, Inc.

If you choose to not accept the terms of this license agreement, then you must promptly return the following items to Henter-Joyce, Inc.: the unopened package containing the media, all materials that may have been included with the Henter-Joyce software, and the receipt you received when you purchased the software. The money you paid for the Software, minus shipping/handling fees, will be refunded to you, if you meet the above three conditions.

2. COPYING THE PROGRAM. The Licensee may not copy or transfer the program, or allow the program to be copied or transferred, in part or in whole, except as specifically indicated within this agreement. In the event the Licensee copies or transfers the program to another person in any form, except as is specifically authorized, then the Licensee's license to use the program shall be automatically terminated.

the Licensee may install the program on the specified number of machines as defined in the Site License Agreement.

The Licensee may copy the program for backup purposes to preserve the program. These copies and the original program may be stored in the possession of another person, so long as the storage does not result in the program being used in violation of the terms set forth above in this section. Whenever the program or instructional materials are reproduced, then the copyright notice must also be reproduced and displayed in its original form.

3. TERM. The license being granted shall be effective until terminated.

The Licensee may terminate the license at any time by destroying all copies of the program and all copies of related instructions, regardless of the form.

Additionally, this license is immediately terminated in the event the Licensee fails to comply with any term or condition of this agreement, whether or not HJ has knowledge of the failure to comply. The Licensee agrees, as a term of this agreement, to

4. LIMITED WARRANTY. The program provided to the Licensee is being provided "as is" without warranty of any kind, either expressed or implied, including, but not limited to the implied warranties of merchantability and fitness for a particular purpose. The entire risk as to the quality and performance of the program is with the Licensee.

HJ does not warrant that the functions contained in the program will meet the Licensee's requirements or that the operation of the program will be uninterrupted or error free. However, HJ warrants the media on which the program is furnished, to be free from defects in materials and workmanship, when in normal use, for a period of ninety (90) days from the date of delivery as evidenced by a copy of your receipt. The limited warranty will be honored by HJ provided that the media is properly stored in an area free of magnets and/or magnetic fields and provided that defects in the materials and workmanship of the media does not result from an act of God or other cause beyond the control of HJ or the media manufacturer.

5. LIMITATION OF REMEDIES. HJ's entire liability and the Licensee's exclusive remedy shall be the replacement of any media not meeting HJ's limited warranty. In no event will HJ be liable to the Licensee for any damages, including any lost profits, loss of savings or any other incidental or consequential damages as may

6. OTHER PROVISIONS. The Licensee may not sublicense, assign or transfer this license to another party. Any attempt to sublicense, assign or transfer any of the rights, duties or obligations under this agreement shall be null and void and without any legal effect.

This agreement shall be governed by the laws of the state of Florida. In the event of any litigation of this agreement, the prevailing party shall be entitled to reimbursement of related costs incurred by such party, including but not limited to such party's reasonable attorney fees.

If you have questions concerning this agreement, please contact Henter-Joyce, Inc., for clarification, 11800 31st Court North, St. Petersburg, FL 33716-1805, phone (800) 336-5658 or (727) 803-8000.

MAGic Hot Keys

ACTION	KEYSTROKES
Align Center Tracking	CTRL+SHIFT+PERIOD
Align Continuous Tracking	CTRL+SHIFT+COMMA
Align Edge Tracking	CTRL+SHIFT+E
Align Predictive Tracking	CTRL+SHIFT+SLASH
Black and White Smoothing Toggle	CTRL+SHIFT+S
Center Mouse in View	CTRL+SHIFT+C
Color Button Toggle	ALT+CTRL+O
Custom Smoothing Color Selector	CTRL+SHIFT+X
Custom Smoothing Color Toggle	ALT+CTRL+SHIFT+S
Center Mouse in View	CTRL+SHIFT+C
Color Button Toggle	ALT+CTRL+O

MAGic Hot Keys

ACTION	KEYSTROKES
Custom Mouse Toggle	ALT+CTRL+U
Go to Mouse	CTRL+SHIFT+H
Go to Bottom Left of Window	[Fixed] ALT+END
Go to Bottom Right of Window	[Fixed] ALT+PAGE DOWN
Go to Top Left of Window	[Fixed] ALT+HOME
Go to Top Right of Window	[Fixed] ALT+PAGE UP
Inverse Mouse Color MAGicView	CTRL+SHIFT+I
Inverse Mouse Color RealView	ALT+CTRL+SHIFT+I
Level Lower Magnification	ALT+CTRL+LEFT ARROW
Level Mouse MAGicView Lower	CTRL+SHIFT+DOWN ARROW
Level Mouse MAGicView Raise	CTRL+SHIFT+UP ARROW

ACTION	KEYSTROKES
Level Mouse RealView Lower	ALT+CTRL+SHIFT+DOWN
Level Mouse RealView Raise	ALT+CTRL+SHIFT+UP
Level Raise Magnification	ALT+CTRL+RIGHT ARR
List Task Tray Icons	INSERT+F11
Locator Toggle	CTRL+SHIFT+L
MAGic Window	ALT+CTRL+M
Magnification Toggle	CTRL+GRAVE (`)
Magnify Full Screen	ALT+CTRL+F
Manual Panning Key Toggle	ALT+CTRL+SHIFT+M
Next MAGicView Mouse Style	None
Next MAGicView Style	ALT+CTRL+V

MAGic Hot Keys

ACTION	KEYSTROKES
Next RealView Mouse Style	None
Pan From Location	ALT+CTRL+P
Pan From Top of Screen	ALT+CTRL+SHIFT+P
Pan From Top of Window	CTRL+SHIFT+W
Refresh Screen	CTRL+SHIFT+R
Resize MAGicView	CTRL+SHIFT+Z
Scroll Down	[Fixed] ALT+DOWN ARR
Scroll Left	[Fixed] ALT+LEFT ARRO
Scroll Right	[Fixed] ALT+RIGHT ARR
Scroll Up	[Fixed] ALT+UP ARROW
Show MAGicMouse Location	CTRL+SHIFT+F11

ACTION	KEYSTROKES
Show RealMouse Location	CTRL+SHIFT+F12
Start MAGic Task List	INSERT F10
Toggle Focus Prompt and Control	CTRL+SHIFT+GRAVE (`)
Track Cursor MAGicView Toggle	None
Track Dialog Toggle	None
Track Menu Toggle	None
Track Mouse Toggle	None
Track Toggle	CTRL+SHIFT+T

MAGic Hot Keys

Note: Keystrokes preceded by the word “Fixed” cannot be changed in the Keys Change dialog box. You can create your own Keys Change dialog box with “None” as the designated Keystroke.

Windows Shortcut Keys

COMMAND	SHORTCUT KEYS
Get help	F1
Open the Start menu	CTRL+ESCAPE
Shut down Windows	CTRL+ESCAPE, U, ENT
Switch between applications	ALT+TAB
Quit the active application	ALT+F4
Open a System menu	ALT+SPACEBAR
Open the Properties dialog	ALT+ENTER
Move to the menu bar	ALT or F10
Choose a menu item	ENTER or Underlined Letter
Move between menus	ARROWS

Windows Shortcut Keys

COMMAND	SHORTCUT KEYS
Cancel or close a menu	ESCAPE
Cancel or close cascading menus	ESCAPE
Open a control menu	ALT+DASH
Close a child window	CTRL+F4
Open the shortcut menu	SHIFT+F10
Move to another selection	TAB or ARROWS
Move through dialog options	TAB
Move to another page	CTRL+TAB or ARROWS
Move to first item	HOME
Move to last item	END
Scroll up or down one screen	PAGE UP or PAGE DOWN

COMMAND	SHORTCUT KEYS
Move one character	LEFT ARROW or RIGHT ARROW
Move one word	CTRL+LEFT ARROW or CTRL+RIGHT ARROW
Move one paragraph	CTRL+UP ARROW or CTRL+DOWN ARROW
Move to beginning	CTRL+HOME
Move to end	CTRL+END
Select or cancel an item	SPACEBAR or CTRL+SPACEBAR
Select or clear a check box	SPACEBAR
Copy	CTRL+C
Cut	CTRL+X
Paste	CTRL+V
Undo	CTRL+Z

Windows Shortcut Keys

COMMAND	SHORTCUT KEYS
Delete current character	DELETE
Delete prior character	BACKSPACE
Select one character	SHIFT+LEFT ARROW or RIGHT ARROW
Select one word	CTRL+SHIFT+LEFT ARROW or CTRL+SHIFT+RIGHT ARROW
Select one line up	SHIFT+UP ARROW
Select one line down	SHIFT+DOWN ARROW
Select to beginning of line	SHIFT+HOME
Select to end of line	SHIFT+END
Select one screen	SHIFT+PAGE UP or SHIFT+PAGE DOWN
Select to beginning	CTRL+SHIFT+HOME

COMMAND	SHORTCUT KEYS
Select to end	CTRL+SHIFT+END
Delete files	DELETE
Delete and bypass the Recycle Bin	SHIFT+DELETE
Rename a file or folder	F2
Find a file or folder, from the desktop	F3
Refresh a Window, in Explorer	F5
Switch Between Windows, in Explorer	F6
Go to a folder, in Explorer	CTRL+G
Go up one level, in Explorer	BACKSPACE

begin using MAGic. Take a moment to look over the following alphabetical list to help you get acquainted with these terms and how they are used in MAGic:

Caret The caret is used as the insertion point for text processing applications. It normally appears as a blinking vertical bar.

Cursor The cursor is a movable, visible mark that is used to indicate the position where the next operation will occur. The cursor may be a caret or an underscore.

Drag and Drop Drag and drop is a method of moving windows and dialogs. Pointing to an object, pressing and holding the left mouse button, then dragging the object to a new location performs the operation. A similar procedure is used to resize windows and dialogs.

Focus Focus is a Windows term used to describe the state in which a window, dialog, menu, or control can receive keyboard input. For example, if a control can receive input from the keyboard, it is said to have focus.

Hot Keys Hot Keys are MAGic keystroke combinations that are similar to Windows shortcut keys. Windows shortcut keys are used to initiate a command while MAGic Hot Keys are used to initiate an action. See also Keystrokes.

Inset The distance in pixels from the inner frame of a MAGicView (magnified view) and the point where Tracking shifts to bring an active object into view. See also Frame.

Inverse The term “Inverse” means the “opposite of” or reverse.

In MAGic, you use the Inverse Color feature to reverse screen colors from the Windows Standard settings.

JFW JFW stands for JAWS for Windows. JAWS is an acronym for Job Access With Speech. JFW is the premier screen-reading software for Windows created by Henter-Joyce, Inc.

Keystrokes The term Keystrokes is used to describe a combination of keyboard keys that are pressed simultaneously to initiate a command or task.

the current magnified view is located in relation to your full computer screen.

Locators can be bars, boxes, or a combination of box and crosshairs.

MAGic MAGic is an acronym for **MAG**nification **In C**olor.

MAGicMouse MAGicMouse is a configurable mouse pointer that is displayed in a magnified view (MAGicView). See also, RealMouse.

MAGicView MAGicView is the magnified portion of your screen. MAGic has seven different MAGicViews from which to choose. See also RealView.

Mouse Pointer

The mouse pointer is the visual pointer that moves on your screen whenever you move your mouse. MAGic mouse pointers can take on many different shapes. The standard mouse pointer is shown here.

Panning Panning is a Magic feature you can use to visually browse application windows without changing the contents of a screen. Both Manual Panning and Full-Screen Panning are available in MAGic.

that is displayed in the unmagnified area of your screen (RealView). See also, MAGicMouse.

RealView RealView is the unmagnified portion of your screen. See also MAGicView.

Smoothing Smoothing compensates for the loss of character definition as screen objects get larger during magnification. Black and White Smoothing refines the background color and the pixel width of objects for improved smoothing.

Tracking Tracking enables MAGic to focus automatically on an active object anywhere on the MAGicView. An object can be an open dialog, a button, or a text cursor.

- actions and keystrokes, 49
- active object, 57, 142
- adjust panning speed, 24, 71, 74
- alignment, tracking, 57, 60, 102
- always save settings on exit, 28
- area panning selection, 69
- authorization help command, 37
- authorization keys
 - defragging considerations, 113
 - dialog, 116
 - getting new keys, 117
 - moving, 113
 - reset code, 118
 - SQCPS, 119
- Authorization Management Interface dialog, 114
- backing up files, 112
- Black and White, 32
- body, locator adjustment, 79
- body, locators settings, 79
- border width, 103
- caret tracking, 59, 139
- center mode, 60, 62
- change keyboard settings, 55
- character width adjust, 98
- circle mouse, 93
- circled circle mouse, 94
- close button, 10
- colors
 - button, 34
 - locator border, 82
 - locators, 81
 - masking, 34
 - reset masked colors, 109
 - screen changes, 1, 34, 104
 - selector tool, 32
 - set both inverse and masking, 107
 - setting preferences, 105
 - unmark button, 109
- combined mouse pointer, 87
- configuring the mouse, 26, 83
- continuous mode, 61
- control elements, 38
 - shortcut menus, 20
- count authorization keys, 116
- cross mouse, 93
- crosshair mouse, 93
- cursor, 139

- dialog
 - change keystroke, 54, 55
 - character width, 98
 - hot keys, 48
 - masking preferences, 108
 - preferences, 39
 - save settings option, 28
 - separate views, 40
 - tracking, 40
 - tracking items, 58
- downloaded MAGic, 111
- drag and drop, 100, 139
- edge mode, 60, 62
- enable color masking, 35
- engine, tracking, 29
- exit MAGic, 21, 28
- F1 Help, 14, 48
- factory settings, 27
- file menu, 21, 69
- focus, 54, 69, 139
- frame, 58, 63, 77
- full screen view, 43
- full-screen panning, 68
- getting help, 13
- getting new authorization keys, 117
- glossary of terms, 139
- menu, 14
- online topics, 14
- Shift+F1, 17
- topic window, 14
- help menu, 36
- hidden files, 113
- hidden mouse, 92
- HJTrack, 29
- horizontal split view, 44
- Hot Keys, 2
 - button, 55
 - fixed, 55
 - inverse mouse color, 91
 - keystrokes, 6, 48, 49, 54
 - listing, 127
 - lower MAGicMouse, 89
 - lower magnification level, 42
 - lower RealMouse, 89
 - manual panning keystrokes, 67
 - navigating with, 24
 - none setting, 55
 - preferences option, 22
 - raise MAGicMouse, 89
 - raise magnification level, 42
 - raise RealMouse, 89
 - unassigned actions, 49, 59

- locator border, 82
- locator color, 80, 102
- screens, 34, 42, 93, 107, 110
- jump panning option, 75
- jump settings, 63
- keystrokes, 6, 48, 49, 54
- lens view, 46
- level
 - no magnification, 41
 - spin box, 41, 88
- license, 121
- locators, 1, 79
 - body settings, 79
 - border settings, 81
 - shortcut menu, 20
- MAGic
 - buttons and controls, 38
 - downloaded version, 111
 - Hot Keys list, 127
 - icon, 20
 - license agreement, 121
 - serial number, 116
 - setting color preferences, 107
 - terms, 139
 - user interface, 2, 9, 19, 38
 - window tool, 26
- MAGicMouse, 25, 83, 85, 86
- attributes, 2, 27
- level, 39, 41, 85, 86
- mouse level, 88
- manual panning key, 49, 66
- masking colors, 34, 104, 108, 110
- menu
 - File, 21
 - Preferences, 22
 - Texture, 31
 - tracking, 59
- menu bar, 21
- minimize MAGic, 20
- mouse
 - button, 26, 83
 - centering on screen, 64
 - change color, 90
 - change type, 91
 - choosing a style, 86
 - circle, 93
 - circled circle, 94
 - color dialog, 90
 - color options, 90
 - combined, 87
 - configuring, 86, 88
 - cross, 93
 - crosshair, 92

- pointer, 46
- pointer, 1
- RealMouse, 25
- routing, 64
- type selection, 86, 91
- Window Standard, 92
- mouse and keyboard, 6
- moving authorization key, 113
- moving border color setting, 103
- moving MAGicViews, 100
- navigational keys, 66, 70
- never save settings on exit, 28
- no magnification level, 41
- Notepad, 69, 70
- online
 - documentation, 18
 - help, 14
- outlined circle mouse, 93
- overlay view, 45, 87
- panning, 1, 44
 - about, 141
 - adjusting speed, 1
 - area, 71
 - button, 23, 24, 68, 71
 - delay dialog, 77
 - delay option, 77
 - preferences option, 23
 - speed adjustment, 74
 - start and stop adjustment, 78
 - startup default settings, 71
- predictive mode, 61, 62
- predictive tracking dialog, 62
- Preferences
 - dialog, 39
 - menu
 - choosing, 22
 - Magnification button, 39
- printing this document, 18
- quick install, 5
- Quick Start Guide, 13
- RealMouse, 25, 83, 85
- RealView, 25, 39, 66
- reset code, authorization, 118
- reset masked colors, 109
- resizing grips, 100
- resizing MAGicViews, 99
- restore factory settings, 27
- reverse screen color, 1
- Run MAGic, 10
- save settings, 21, 28
- save settings on exit, 10
- screen color, 34
- screen navigation controls, 1

- Hot Keys dialog, 23
- listing, 133
- setting Windows colors, 105
- shortcut menus, 20
- single user license, 112
- smart border option, 82
- smart locator adjustment, 81
- smoothing
 - about, 142
 - button, 32, 95
 - delay, 33
 - S symbol, 96
- solid locator, 80, 81
- speed adjustment, 1, 24, 68, 71, 74
- SQCPS, reset code, 119
- standard mouse pointer, 69, 141
- start delay setting, 77
- status bar
 - ALT symbol, 17
 - help and status, 16
 - SEP symbol, 17, 41
 - SHIFT symbol, 17
 - toggle on or off, 36
- stop and start panning, 68, 70, 78
- help buttons, 15
- topics, help, 14
- track items dialog box, 58
- tracking, 1
 - alignment, 60
 - button, 57
 - caret, 59, 139
 - continuous mode alignment, 61
 - dialogs, 59
 - edge mode alignment, 60
 - engine, 29
 - menus, 59
 - mouse, 59
 - mouse pointer, 23
 - mouse routing, 64
 - predictive mode alignment, 61
 - predictive settings, 62
 - preferences option, 23, 29
 - preferences page, 40
 - setting preferences, 57
 - shortcut menu, 57
 - track items, 58, 102
- tracking lens view, 46
- transparent locator body, 80
- unassigned actions, 49

- Users Guide, 13
- vertical split view, 44
- What's This?, 36
- window
 - button, 26
 - tool, 26

- Windows
 - MS-DOS, 118
 - Notepad, 69, 70
 - setting color preferences, 105
 - shortcut keys, 59, 67, 133
 - standard mouse, 85, 86, 92